

MSD[®] MULTI-ARRAY Assay System

Ubiquitinated p53 Assay Base Kit

20-Plate Kit

K151FKA-3



www.mesoscale.com[®]

MSD Biomarker Detection Assays

Ubiquitinated p53 Assay Base Kit

This package insert must be read in its entirety before using this product.

FOR RESEARCH USE ONLY.

NOT FOR USE IN DIAGNOSTIC PROCEDURES.

MESO SCALE DISCOVERY[®]

A division of Meso Scale Diagnostics, LLC.

9238 Gaither Road

Gaithersburg, MD 20877 USA

www.mesoscale.com

MESO SCALE DISCOVERY, MESO SCALE DIAGNOSTICS, WWW.MESOSCALE.COM, MSD, MSD (DESIGN), DISCOVERY WORKBENCH, QUICKPLEX, MULTI-ARRAY, MULTI-SPOT, SULFO-TAG, SECTOR, SECTOR HTS, SECTOR PR, 4-SPOT (DESIGN), and SPOT THE DIFFERENCE are trademarks and/or service marks of Meso Scale Diagnostics, LLC.

© 2011 Meso Scale Diagnostics, LLC. All rights reserved.

Table of Contents

MSD Advantage.....	4
Introduction	4
Principle of the Assay.....	5
Reagents Supplied	6
Required Material and Equipment – not supplied.....	6
Optional Material – not supplied	6
Safety.....	7
Reagent Preparation.....	7
Sample Preparation and Storage	9
Assay Protocol.....	10
Typical Data.....	12
Assay Components	13
Limitations of the Procedure	13
Companion Products.....	13
References.....	14
Appendix.....	14
Summary Protocol.....	15
Plate Diagrams	17

Ordering Information

MSD Customer Service

Phone: 1-301-947-2085
Fax: 1-301-990-2776
Email: CustomerService@mesoscale.com

MSD Scientific Support

Phone: 1-301-947-2025
Fax: 1-240-632-2219 attn: Scientific Support
Email: ScientificSupport@mesoscale.com

MSD Advantage

MESO SCALE DISCOVERY'S unique spot patterns are a hallmark of our MULTI-ARRAY[®] technology which measures multiple biomarkers utilizing next generation electrochemiluminescent detection. In a MULTI-ARRAY assay, specific capture antibodies are coated in arrays in each well of a 96- or a 384-well carbon electrode plate. The detection system uses patented SULFO-TAG[™] labels that emit light upon electrochemical stimulation, resulting in assays with low background. MSD SULFO-TAG labels are stable, non-radioactive, and easily conjugated to biological molecules. Electrochemiluminescence is a proximity assay, so only labels near the electrode surface are excited, making non-washed assays possible.

Compared to MSD technology, an ELISA requires larger sample volume, measures only one analyte at a time, and has a more complicated, time-consuming protocol. With an MSD electrochemiluminescent assay, up to ten different biomarkers can be analyzed simultaneously using as little as 10–25 μ L of sample. MSD assays have high sensitivity, up to five logs of linear dynamic range, and excellent performance in complex biological matrices. Combined, these advantages enable measurement of native levels of biomarkers in normal and diseased samples without multiple dilutions. The simple and rapid protocols of MSD assays provide a powerful tool to generate reproducible and reliable results, reducing workflow without compromising data quality. The result is an increase in productivity and a decrease in cost per analyte.

The MSD product line offers an extensive menu of assay kits for quantifying biomarkers and dissecting cell signaling pathways as well as custom and prototype assays designed to customer specifications. Plates and reagents are available for customers wishing to develop novel assays on the MSD platform.

Introduction

p53 (protein 53) is a transcription factor and tumor suppressor protein with an apparent molecular weight of 53 kDa that plays a critical role in cell cycle regulation, progression, and apoptosis.¹ p53 is composed of an amino terminal transcription activation domain, a proline rich domain critical to the p53 apoptotic functions, a central DNA binding domain, a nuclear localization sequence, and an oligomerization domain.² The extent of DNA damage and different types of cellular stress determine the set of downstream targets activated by p53. MDM2 (murine double minute 2) is a potent negative regulator of p53 through its binding and subsequent polyubiquitination of p53, resulting in proteasome dependent degradation.³ This negative regulation can be relieved both through phosphorylation of p53, resulting in destabilization of the MDM2–p53 interaction,⁴ and through phosphorylation and ubiquitination of MDM2.¹

p53 is the most commonly mutated gene in cancer, and a functional copy of p53 is required to maintain a non-tumorigenic phenotype.⁵ When cell repair is possible, p53 activates genes which pause the cell cycle allowing time for DNA repair, but when damage is extensive, p53 activates the BCL-2 family of proteins leading to apoptosis.⁶ p53's role as a transcription factor and the negative regulation of the protein by MDM2-mediated polyubiquitination has been extensively researched due to its crucial role in cancer prevention and cell cycle control.

Principle of the Assay

MSD biomarker detection assays provide a rapid and convenient method for measuring the levels of protein targets within a single, small-volume sample. The assays are available in both singleplex and multiplex formats. In a singleplex assay, an antibody for a specific protein target is coated on one electrode (or “spot”) per well. In a multiplex assay, an array of capture antibodies against different targets is patterned on distinct spots in the same well. The Ubiquitinated p53 Assay is a sandwich immunoassay (Figure 1). MSD provides a plate that has been pre-coated with capture antibody for ubiquitinated p53. The user adds the sample and a solution containing the detection antibody—anti-ubiquitinated p53 conjugated with an electrochemiluminescent label, MSD SULFO-TAG—over the course of one or more incubation periods. Analyte in the sample binds to the capture antibody immobilized on the working electrode surface; recruitment of the conjugated detection antibody by bound analyte completes the sandwich. The user adds an MSD read buffer that provides the appropriate chemical environment for electrochemiluminescence and loads the plate into an MSD SECTOR® Imager for analysis. Inside the SECTOR Imager, a voltage applied to the plate electrodes causes the labels bound to the electrode surface to emit light. The instrument measures intensity of emitted light to provide a quantitative measure of ubiquitinated p53 present in the sample.

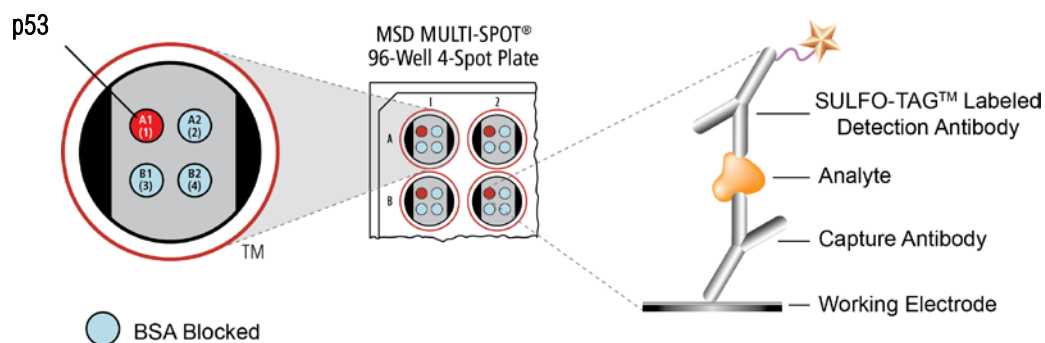


Figure 1. Spot diagram showing placement of analyte capture antibody. The numbering convention for the different spots is maintained in the software visualization tools, on the plate packaging, and in the data files. A unique bar code label on each plate allows complete traceability back to MSD manufacturing records.

Reagents Supplied

Product Description	Storage	Quantity per Kit K151FKA-3
MULTI-SPOT 96-Well 4-Spot p53 Plate(s) N451CGB-1	2–8°C	20 plates
SULFO-TAG Anti-Ubiquitinated Protein Antibody ¹ (0.33 µM)	2–8°C	4 vials (375 µL ea)
Read Buffer T (4X) R92TC-3 (50 mL), R92TC-2 (200 mL)	RT	1 bottle (200 mL)

Required Materials and Equipment — not supplied

- Deionized water for diluting Tris Wash Buffer (10X) and Read Buffer T (4X)
- EDTA (0.5 M)
- 500 mL bottle for reagent preparation
- 50 mL tubes for reagent preparation
- 15 mL tubes for reagent preparation
- Microcentrifuge tubes for preparing serial dilutions
- Appropriate liquid handling equipment for desired throughput, capable of dispensing 10 to 150 µL into a 96-well microtiter plate
- Plate washing equipment: automated plate washer or multichannel pipette
- Adhesive plate seals
- Microtiter plate shaker

Optional Material — not supplied

- Ubiquitinated p53 Whole Cell Lysate Set (available for separate purchase from MSD, catalog #C11FK-1)
- Phosphoprotein Reagent Support Pack (catalog number K0000D-3)

¹ Some SULFO-TAG conjugated detection antibodies may be light-sensitive, so they should be stored in the dark.

Safety

Safe laboratory practices and personal protective equipment, such as gloves, safety glasses, and lab coats, should be used at all times during the handling of all kit components. All hazardous samples should be handled and disposed of properly, in accordance with local, state, and federal guidelines.

Reagent Preparation

Note

The instructions below will prepare the reagents needed as described in the assay protocol. All supplemental reagents (inhibitors, buffers, and blocking reagents) are available for purchase in the MSD Phosphoprotein Reagent Support Pack or can be purchased and prepared separately by the user. Please see the enclosed assay development insert for purchasing and preparation instructions.

Prepare Tris Wash Buffer

Dilute the 10X stock of Tris Wash Buffer to 1X as shown below. Tris Wash Buffer (1X) will be used throughout the assay to make additional reagents and wash plates. Approximately 350 mL per plate is required—more if using an automatic plate washer.

For one plate, combine:

- 35 mL of Tris Wash Buffer (10X)
- 315 mL deionized water

Excess Tris Wash Buffer may be stored at room temperature in a tightly sealed container for later use.

Prepare Blocking Solution-B

For one plate, combine:

- 1 g Blocker B (dry powder)
- 20 mL 1X Tris Wash Buffer

Mix well until all materials are completely dissolved.

Prepare Antibody Dilution Buffer

For one plate, combine:

- 150 μ L 2% Blocker D-M
- 30 μ L 10% Blocker D-R
- 30 mg blocker A
- 2.82 mL 1X Tris Wash Buffer

Set aside on ice.

Prepare Complete Lysis Buffer

To 10 mL of the Tris Lysis Buffer, add the following supplemental materials to prepare the complete lysis buffer (sufficient for 2-3 plates):

- 100 μ L Protease Inhibitor Solution (100X stock)
- 400 μ L 0.5 M EDTA
- 500 mg Blocker B

Mix well until all materials are dissolved. The complete lysis buffer should be ice cold before use.

Prepare Detection Antibody Solution

For one plate, combine:

- 2.955 mL antibody dilution buffer
- 45.5 μ L of SULFO-TAG Anti-Ubiquitinated Protein Antibody (5 nM final concentration)

Prepare Read Buffer

For one plate, combine:

- 5.0 mL Read Buffer T (4X)
- 15 mL deionized water

Diluted read buffer may be stored at room temperature in a tightly sealed container for later use.

Prepare MSD Plate

This plate has been pre-coated with antibody for the analyte shown in Figure 1. The plate can be used as delivered; no additional preparation (e.g., pre-wetting) is required. The plate has also been exposed to a proprietary stabilizing treatment to ensure the integrity and stability of the immobilized antibodies.

Sample Preparation and Storage

This cell lysis protocol is provided as a reference. Specific cell types or targets may benefit from alternative buffer components or techniques, depending upon the particular research application. Most lysis buffers are compatible with MSD MULTI-SPOT plates, although high concentrations of denaturing detergents (>0.1%) and reducing agents (DTT >1mM) should be avoided. Please contact MSD Scientific Support with any questions regarding lysate preparation options.

All manipulations should be performed on ice. The amount of complete lysis buffer required will vary depending on scale of preparation and type of cells. Larger cells (e.g. NIH3T3, HeLa) should be lysed at concentrations of $1-5 \times 10^6$ cells per mL of lysis buffer. Smaller cells (e.g. Jurkat) should be lysed at concentrations of $1-5 \times 10^7$ cells per mL of lysis buffer.

Analysis of proteins in their activated state (i.e. phosphorylated) usually requires stimulation prior to cell lysis. Verification of cell stimulation and sample preparation should be performed prior to using this kit. Phosphate buffered saline (PBS) should be ice-cold when used.

Suspension Cells

Pellet cells by centrifugation at 500 x g for 3 minutes at 2–8°C. Discard supernatant and wash the pellet once with cold PBS. Pellet the cells again, discard supernatant, and resuspend in complete lysis buffer at $1-5 \times 10^7$ cells per mL. Incubate on ice for 30 minutes. A shorter incubation time of 15 minutes may be adequate for many targets. Clear cellular debris from the lysate by centrifugation greater than or equal to 10000 x g, at 2–8°C for 10 minutes. Discard the pellet and determine the protein concentration in the lysate using a detergent compatible protein assay such as a bicinchoninic acid (BCA) assay. Unused lysates should be aliquoted, quickly frozen in a dry ice-ethanol bath, and stored at $\leq -70^\circ\text{C}$.

Adherent Cells

All volumes are determined for cells plated in 15 cm dishes. Remove media from the plates and wash cells one time with 5 mL cold PBS. Add 2 mL PBS to the plates, scrape the cells from the surface of the dish, and transfer into 15 mL conical tubes. Pellet the cells by centrifugation at 500 x g for 3 minutes at 2–8°C. Discard supernatant and resuspend cells in 0.5–2 mL of complete lysis buffer per dish. Incubate on ice for 30 minutes. A shorter incubation time of 15 minutes may be adequate for many targets. Clear cellular debris from the lysate by centrifugation greater than or equal to 10 000 x g, at 2–8°C for 10 minutes. Discard the pellet and determine protein concentration in the lysate using a detergent compatible protein assay such as BCA. Unused lysates should be aliquoted, quickly frozen in a dry ice-ethanol bath, and stored at $\leq -70^\circ\text{C}$.

Refer to Appendix I for cell lysate preparation protocol modifications that accommodate the use of 96-well culture plates.

Assay Protocol

The following protocol describes the most conservative approach to achieving optimal results with the MULTI-ARRAY Ubiquitinated p53 Assay. The entire assay, including plate analysis on the MSD reader, can be completed in 5.5 hours. Once desired results are achieved, the protocol can be streamlined to eliminate multiple incubations and wash steps. Samples may be prepared for testing in the manner outlined in the Sample Preparation and Storage section.

1. Block Plate and Prepare Samples:

- a. Add 150 μ L of blocking solution-B into each well. Seal the plate with an adhesive plate seal, and incubate for 1 hour with vigorous shaking (300–1000 rpm) at room temperature.
- b. Prepare complete lysis buffer just prior to sample dilution.

Note: Samples, including cell lysates, etc., may be used neat or after dilution.

- MSD plates are compatible with most sample matrices. Avoid reagents that will denature the capture antibodies (e.g. high concentrations of reducing agents such as DTT should be avoided, and SDS and other ionic detergents should be 0.1% or less in the sample applied to the well).
- Depending on the stability of the target in the matrix, additional protease inhibitors may be required in the matrix or diluent.
- If working with purified protein, only a few nanograms per well will generally provide a strong assay signal. Purified recombinant proteins may exhibit differences in both signal and background as compared to native proteins in cell lysates.
- Keep diluted samples on ice until use

- c. Prepare positive and negative cell lysates.

Note: Cell lysates may be purchased separately from MSD.

- Thaw cell lysate samples on ice, and dilute them immediately before use. Keep on ice during all manipulations, and discard all remaining thawed, unused material.
- Dilute cell lysate in complete lysis buffer. The typical dilutions range from 0.08–5 μ g/well.

Notes

Read entire protocol prior to beginning the assay.

Complete lysis buffer should be kept ice-cold during all experimental manipulations.

The sensitivity of MSD immunoassays rivals that of ELISAs and Western blots. The amount of sample required for a given assay will depend on the abundance of the analyte in the matrix and the affinities of the antibodies used.

Samples and standards cannot be serially diluted in the MSD plate. Use microcentrifuge tubes or a separate 96-well polypropylene plate to prepare dilutions.

2. **Wash and Add Samples:** Wash the plate 3 times with 300 μ L/well of Tris Wash Buffer. Add 25 μ L of sample per well. Seal the plate with an adhesive plate seal, and incubate for 3 hours with vigorous shaking (300–1000 rpm) at room temperature.

Prepare detection antibody solution during this time.

3. **Wash and Add Detection Antibody:** Wash the plate 3 times with 300 μ L/well of Tris Wash Buffer. Add 25 μ L of detection antibody solution to each well of the MSD plate. Seal the plate with an adhesive plate seal, and incubate for 1 hour with vigorous shaking (300–1000 rpm) at room temperature.

Prepare 1X Read Buffer T during this time.

4. **Wash and Read:** Wash the plate 3 times with 300 μ L/well of Tris Wash Buffer. Add 150 μ L of 1X Read Buffer T to each well of the MSD plate.

Analyze the plate on the SECTOR Imager:

- a. Double click on DISCOVERY WORKBENCH[®] icon on computer desktop (if not already open).
- b. Click the SECTOR Imager icon in upper left corner of screen (if not already open to plate reading screen).
- c. From the pull down menu, select “Read From Barcode.”
- d. If only reading one plate, check “Return Plate to Input Stack.” Then check “Read Plate(s)” checkbox and enter 1.
- e. If reading multiple plates, check the “Read Plate(s)” checkbox and enter number of plates to be read in the text field. For example, if five plates need to be read, type in “5.”
- f. Click the “Run” button. The “Run Options” window will be displayed.
- g. If the data from each microplate is to be exported as individual files, select “Separate Files” in the “Export” area of the “Run Options” window. Select “Appended File” if all data from the entire stack run is to be exported to one file. Select “Default” in the “Export Format” area. Check the box to export default data file.
- h. If desired, make selections to export a custom data file.
- i. Browse and select the location to export data files.
- j. Click OK to initiate the run.
- k. Data will be automatically saved in the software database. Text versions of the requested data files will be exported to the designated folder.

Shaking a 96-well MSD MULTI-ARRAY or MULTI-SPOT plate during an incubation step will typically accelerate capture at the working electrode.

The lysate sample incubation time provided is optimized for the use of MSD cell lysates. Samples from other sources may require a longer incubation.

Excess diluted read buffer may be kept in a tightly sealed container at room temperature for later use.

Bubbles introduced during the read buffer addition will interfere with imaging of the plate and produce unreliable data.

Plate should be imaged within 5 minutes following the addition of read buffer. Due to the varying nature of each research application, assay stability should be investigated prior to allowing plates to sit with read buffer for extended periods.

An all-inclusive indelible copy of the data and associated instrument information will be saved on the internal database, regardless of data file export selection. Additional copies of the data can be exported in any layout at a later time using this database. Consult the instrument user manual for more information.

Typical Data

Representative results for the MULTI-ARRAY Ubiquitinated p53 Assay are illustrated below. The signal and ratio values provided are example data; individual results may vary depending upon the samples tested. Western blot analyses of each lysate type were performed with a total p53 antibody and are shown for comparison. Growing HCT116 cells (negative) were treated with doxorubicin (1 μ M; 21 hours) and epoxomicin (1 μ M; 6 hours) (positive). Whole cell lysates were added to MSD MULTI-SPOT 4-Spot plates coated with anti-total p53 antibody on one of the four spatially distinct electrodes per well. Ubiquitinated p53 was detected with antibody against ubiquitinated proteins conjugated with MSD SULFO-TAG.

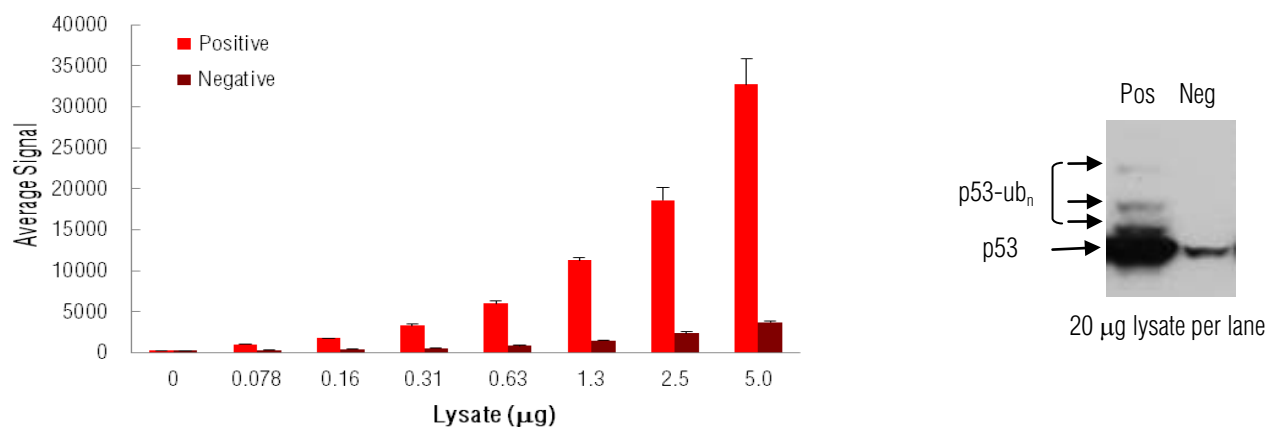


Figure 2: Sample data generated with MULTI-ARRAY Ubiquitinated p53 Assay. Increased signal is observed with the titration of ubiquitinated p53 positive cell lysate. Signal for negative lysate remains low throughout the titration. The Ubiquitinated p53 Assay provides a quantitative measure of the data obtained with the traditional Western blot.

Lysate Titration

Data for ubiquitinated p53 positive and negative HCT116 cell lysates using the MULTI-ARRAY Ubiquitinated p53 Assay are presented below.

Lysate (μ g)	Positive			Negative			P/N
	Average Signal	StdDev	%CV	Average Signal	StdDev	%CV	
0	245	8	3.5	243	14	5.9	1.0
0.078	1018	10	1.0	321	11	3.4	3.2
0.16	1758	50	2.8	420	11	2.7	4.2
0.31	3327	138	4.1	554	53	9.5	6.0
0.63	6006	312	5.2	858	51	5.9	7.0
1.3	11281	277	2.5	1482	57	3.8	7.6
2.5	18596	1,522	8.2	2362	173	7.3	7.9
5.0	32744	3,099	9.5	3714	141	3.8	8.8

Assay Components

The capture and detection antibodies used in this assay are listed below. They cross-react with human, mouse, and rat whole cell lysates.

Analyte	Source Species	
	MSD Capture Antibody	MSD Detection Antibody
Ubiquitinated p53	Mouse Monoclonal	Mouse Monoclonal

Limitations of the Procedure

The following points should be noted with the MULTI-ARRAY Ubiquitinated p53 Assay to maximize assay sensitivity and performance.

- A no-wash assay format may be employed; however, lower sensitivity may be observed.
- Cell lysates should be thawed immediately prior to use. The freeze-thaw stability of the remaining material should be determined for each protein.

Companion Products

MULTI-ARRAY Ubiquitinated/Total p53 Assay	
Kit Size	Catalog Numbers
1 plate	K15169D-1
5 plates	K15169D-2
20 plates	K15169D-3
20 plates (Base Kit)	K15169A-3
MULTI-ARRAY Total p53 Assay	
Kit Size	Catalog Numbers
1 plate	K150DBD-1
5 plates	K150DBD-2
20 plates	K150DBD-3
20 plates (Base Kit)	K150DBA-3

References

1. Inuzuka H, Fukushima H, Shaik S, Wei W. Novel insights into the molecular mechanisms governing Mdm2 ubiquitination and destruction. *Oncotarget*. 2010 Nov;1(17):685-90.
2. Okorokov AL, Orlova EV. Structural biology of the p53 tumour suppressor. *Curr Opin Struct Biol*. 2009 Apr;19(2):197-202.
3. Midgley CA, Lane DP. p53 protein stability in tumour cells is not determined by mutation but is dependent on Mdm2 binding. *Oncogene*. 1997 Sep 4;15(10):1179-89.
4. Hirao A, Kong YY, Matsuoka S, Wakeham A, Ruland J, Yoshida H, Liu D, Elledge SJ, Mak TW. DNA damage-induced activation of p53 by the checkpoint kinase Chk2. *Science*. 2000 Mar 10;287(5459):1824-7.
5. Kenzelmann Broz D, Attardi LD. In vivo analysis of p53 tumor suppressor function using genetically engineered mouse models. *Carcinogenesis*. 2010 Aug;31(8):1311-8.
6. Brady CA, Attardi LD. p53 at a glance. *J Cell Sci*. 2010 August 1;123(Pt 15):2527-32.

Appendix

96-well Culture Plate Modifications

Successful adaptation to a 96-well culture format is dependent on cell type and target. The number of cells to be plated per well should be determined for each cell type. General recommended plating concentrations range from 1×10^4 – 10^5 cells per well. These numbers are provided as a guide; the optimal concentrations will vary depending on cell line used.

Suspension Cells

Many cell types can be lysed without removing growth medium. For flat bottom plates, design the experiment so that the final suspension cell volume per well is such that a concentrated complete lysis buffer (prepared by the user) can be added to the well to achieve a final 1X lysis buffer concentration in the well. For example, 40 μ L of 5X complete lysis buffer added to a well containing 160 μ L of cell culture medium would provide a 1X concentration of complete lysis buffer.

For conical microwell plates, perform lysis by pelleting the cells, removing most of the growth medium, and adding a constant amount of 1X complete lysis buffer.

Adherent Cells

Plate cells on tissue culture plates to reduce variability due to cells lost as growth medium is removed. Treat cells as desired. Gently aspirate growth medium from the microwell plate to avoid disrupting the cell monolayer. A PBS wash step is not required and can introduce variability as cells may detach during the wash step. Add 100 μ L 1X complete lysis buffer per well. Lysis volume may be modified for different cell types or applications.

Cell lysis time should be determined by the end user. Some targets are immediately available for detection. Other targets may require an incubation step at room temperature or on ice with gentle agitation.

Carefully pipet cell lysate onto prepared capture plate and proceed with assay protocol.

It is important to transfer a constant volume and to avoid pipetting too vigorously, as the introduction of air bubbles may result.

Summary Protocol

MSD 96-well MULTI-ARRAY Ubiquitinated p53 Assay Kit

MSD provides this summary protocol for your convenience.
Please read the entire detailed protocol prior to performing the
MULTI-ARRAY Ubiquitinated p53 Assay.

Step 1: Block Plate and Prepare Samples

Add 150 μ L/well of blocking solution.
Incubate at room temperature with vigorous shaking (300-1000 rpm) for 1 hour.
Prepare complete lysis buffer just prior to sample dilution.
Prepare positive and negative cell lysates and keep on ice until use.

Step 2: Wash and Add Sample

Wash plate 3 times with 300 μ L/well of Tris Wash Buffer.
Dispense 25 μ L/well samples.
Incubate at room temperature with vigorous shaking (300-1000 rpm) for 3 hours.

Step 3: Wash and Add Detection Antibody Solution

Wash plate 3 times with 300 μ L/well of Tris Wash Buffer.
Dispense 25 μ L/well 1X detection antibody solution.
Incubate at room temperature with vigorous shaking (300-1000 rpm) for 1 hour.

Step 4: Wash and Read Plate

Wash plate 3 times with 300 μ L/well of Tris Wash Buffer.
Dispense 150 μ L/well 1X Read Buffer T.
Analyze plate on SECTOR Imager within 5 minutes of read buffer addition.

	1	2	3	4	5	6	7	8	9	10	11	12
A	<input type="checkbox"/>	<input type="checkbox"/>	<input type="checkbox"/>	<input type="checkbox"/>	<input type="checkbox"/>	<input type="checkbox"/>	<input type="checkbox"/>	<input type="checkbox"/>	<input type="checkbox"/>	<input type="checkbox"/>	<input type="checkbox"/>	<input type="checkbox"/>
B	<input type="checkbox"/>	<input type="checkbox"/>	<input type="checkbox"/>	<input type="checkbox"/>	<input type="checkbox"/>	<input type="checkbox"/>	<input type="checkbox"/>	<input type="checkbox"/>	<input type="checkbox"/>	<input type="checkbox"/>	<input type="checkbox"/>	<input type="checkbox"/>
C	<input type="checkbox"/>	<input type="checkbox"/>	<input type="checkbox"/>	<input type="checkbox"/>	<input type="checkbox"/>	<input type="checkbox"/>	<input type="checkbox"/>	<input type="checkbox"/>	<input type="checkbox"/>	<input type="checkbox"/>	<input type="checkbox"/>	<input type="checkbox"/>
D	<input type="checkbox"/>	<input type="checkbox"/>	<input type="checkbox"/>	<input type="checkbox"/>	<input type="checkbox"/>	<input type="checkbox"/>	<input type="checkbox"/>	<input type="checkbox"/>	<input type="checkbox"/>	<input type="checkbox"/>	<input type="checkbox"/>	<input type="checkbox"/>
E	<input type="checkbox"/>	<input type="checkbox"/>	<input type="checkbox"/>	<input type="checkbox"/>	<input type="checkbox"/>	<input type="checkbox"/>	<input type="checkbox"/>	<input type="checkbox"/>	<input type="checkbox"/>	<input type="checkbox"/>	<input type="checkbox"/>	<input type="checkbox"/>
F	<input type="checkbox"/>	<input type="checkbox"/>	<input type="checkbox"/>	<input type="checkbox"/>	<input type="checkbox"/>	<input type="checkbox"/>	<input type="checkbox"/>	<input type="checkbox"/>	<input type="checkbox"/>	<input type="checkbox"/>	<input type="checkbox"/>	<input type="checkbox"/>
G	<input type="checkbox"/>	<input type="checkbox"/>	<input type="checkbox"/>	<input type="checkbox"/>	<input type="checkbox"/>	<input type="checkbox"/>	<input type="checkbox"/>	<input type="checkbox"/>	<input type="checkbox"/>	<input type="checkbox"/>	<input type="checkbox"/>	<input type="checkbox"/>
H	<input type="checkbox"/>	<input type="checkbox"/>	<input type="checkbox"/>	<input type="checkbox"/>	<input type="checkbox"/>	<input type="checkbox"/>	<input type="checkbox"/>	<input type="checkbox"/>	<input type="checkbox"/>	<input type="checkbox"/>	<input type="checkbox"/>	<input type="checkbox"/>

	1	2	3	4	5	6	7	8	9	10	11	12
A	<input type="checkbox"/>	<input type="checkbox"/>	<input type="checkbox"/>	<input type="checkbox"/>	<input type="checkbox"/>	<input type="checkbox"/>	<input type="checkbox"/>	<input type="checkbox"/>	<input type="checkbox"/>	<input type="checkbox"/>	<input type="checkbox"/>	<input type="checkbox"/>
B	<input type="checkbox"/>	<input type="checkbox"/>	<input type="checkbox"/>	<input type="checkbox"/>	<input type="checkbox"/>	<input type="checkbox"/>	<input type="checkbox"/>	<input type="checkbox"/>	<input type="checkbox"/>	<input type="checkbox"/>	<input type="checkbox"/>	<input type="checkbox"/>
C	<input type="checkbox"/>	<input type="checkbox"/>	<input type="checkbox"/>	<input type="checkbox"/>	<input type="checkbox"/>	<input type="checkbox"/>	<input type="checkbox"/>	<input type="checkbox"/>	<input type="checkbox"/>	<input type="checkbox"/>	<input type="checkbox"/>	<input type="checkbox"/>
D	<input type="checkbox"/>	<input type="checkbox"/>	<input type="checkbox"/>	<input type="checkbox"/>	<input type="checkbox"/>	<input type="checkbox"/>	<input type="checkbox"/>	<input type="checkbox"/>	<input type="checkbox"/>	<input type="checkbox"/>	<input type="checkbox"/>	<input type="checkbox"/>
E	<input type="checkbox"/>	<input type="checkbox"/>	<input type="checkbox"/>	<input type="checkbox"/>	<input type="checkbox"/>	<input type="checkbox"/>	<input type="checkbox"/>	<input type="checkbox"/>	<input type="checkbox"/>	<input type="checkbox"/>	<input type="checkbox"/>	<input type="checkbox"/>
F	<input type="checkbox"/>	<input type="checkbox"/>	<input type="checkbox"/>	<input type="checkbox"/>	<input type="checkbox"/>	<input type="checkbox"/>	<input type="checkbox"/>	<input type="checkbox"/>	<input type="checkbox"/>	<input type="checkbox"/>	<input type="checkbox"/>	<input type="checkbox"/>
G	<input type="checkbox"/>	<input type="checkbox"/>	<input type="checkbox"/>	<input type="checkbox"/>	<input type="checkbox"/>	<input type="checkbox"/>	<input type="checkbox"/>	<input type="checkbox"/>	<input type="checkbox"/>	<input type="checkbox"/>	<input type="checkbox"/>	<input type="checkbox"/>
H	<input type="checkbox"/>	<input type="checkbox"/>	<input type="checkbox"/>	<input type="checkbox"/>	<input type="checkbox"/>	<input type="checkbox"/>	<input type="checkbox"/>	<input type="checkbox"/>	<input type="checkbox"/>	<input type="checkbox"/>	<input type="checkbox"/>	<input type="checkbox"/>