

Activating the Configuration Manager Feature in DISCOVERY WORKBENCH® 4.0

DISCOVERY WORKBENCH contains a feature called the Configuration Manager that is designed to provide additional control where needed, such as in clinical environments or where 21 CFR Part 11 compliance is required. This feature is initially disabled, but the steps below describe how to activate it.

In the regulated laboratory environment, Configuration Manager status should be restricted to a minimum number of qualified individuals. A Configuration Manager can control user access to the software as well as access and availability of features such as kit layouts, database functions, and QC criteria. Some features, such as the ability to disable specific spots when reading a plate, cannot be activated without a Configuration Manager.

You will need Windows administrator rights to designate a Configuration Manager. To create a Configuration Manager:

1. Close DISCOVERY WORKBENCH software.
- 2) Right-click on My Computer and select Manage. This will bring up the Computer Management Window.
- 3) Expand the Local Users and Groups category.
- 4) Right-click Groups, then choose New Group (Figure 1).

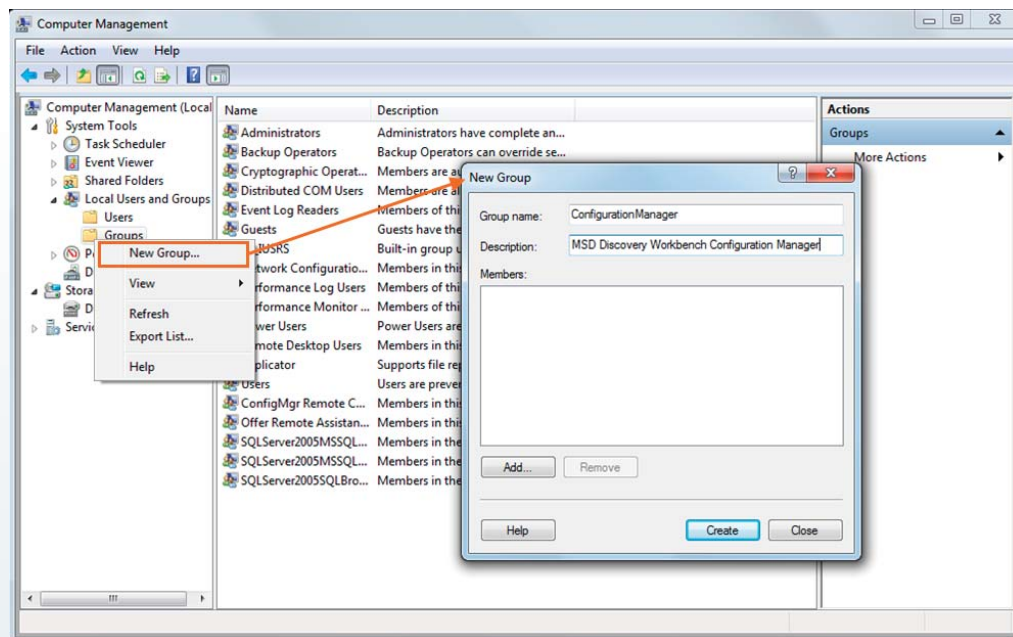


Figure 1: Creating a new group in Windows to add a Configuration Manager to DISCOVERY WORKBENCH

- 5) In the New Group window, name the group ConfigurationManager (note this is one word). A description is optional (Figure 1).
- 6) Select Add. Type the user's Windows login name in the box as shown in Figure 2.

Activating the Configuration Manager Feature in DISCOVERY WORKBENCH® 4.0

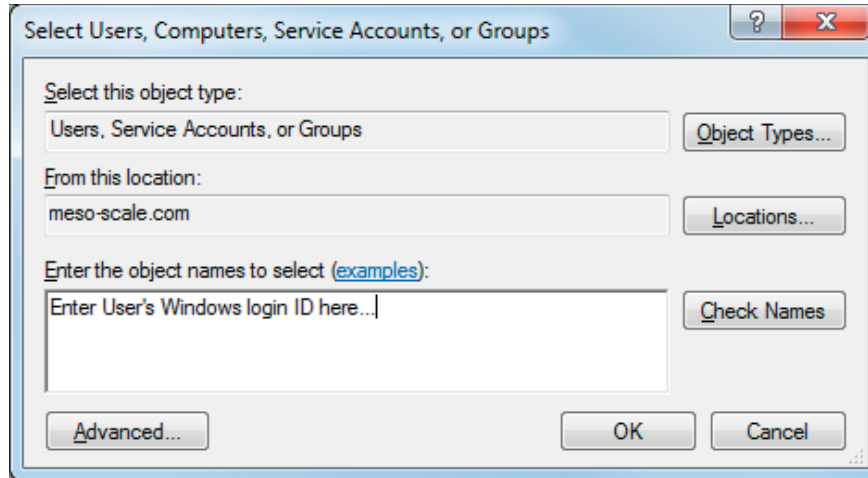


Figure 2: Adding a user as a Configuration Manager

- 7) Once the name is typed, use the Check Names option to verify the name or simply click OK to continue (Figure 2).
- 8) Click Create in the New Group window (Figure 1) then Close.

The user has now been added to the Configuration Manager group and has extra privileges and permissions in DISCOVERY WORKBENCH. The computer may need to be restarted for the changes to take effect.