

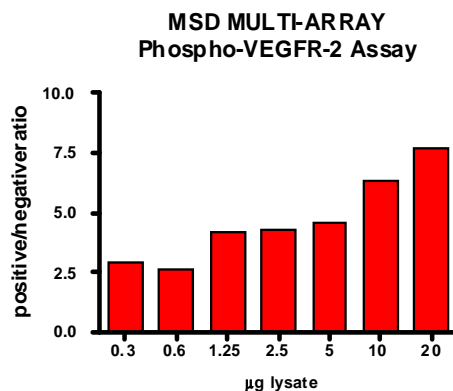
# Meso Scale Discovery® Whole Cell Lysate Set

## Phospho-VEGFR-2 (Tyr 1054)

<b>Catalog No:</b>	C11DJ-1
<b>Contents:</b>	2 x 100 µg MSDLY0017 pVEGFR-2 Negative Cell Lysate Cell lysate from serum deprived HEK-KDR <sup>1</sup> cells  2 x 100 µg MSDLY0018 pVEGFR-2 Positive Cell Lysate Cell lysate from serum deprived HEK-KDR cells treated with 1 nM VEGF for 5 minutes to stimulate VEGFR-2 phosphorylation
<b>Concentration:</b>	2 mg/mL in MSD® Complete Tris Lysis Buffer
<b>Volume:</b>	2 vials (50 µL) negative lysate    2 vials (50 µL) positive lysate
<b>Preparation:</b>	Following cell treatment, HEK-KDR cell lysates are prepared on ice in MSD Complete Tris Lysis Buffer. Cell debris was cleared by centrifugation.
<b>Storage:</b>	Lysates should be stored at -80°C. Lysates will retain approximately 90% of activity after a single round of freeze thaw if handled properly (thawed on ice and immediately refrozen in smaller aliquots).
<b>Quality Control:</b>	Lysates have been tested for performance in Western Blot and MSD MULTI-ARRAY® Assays.

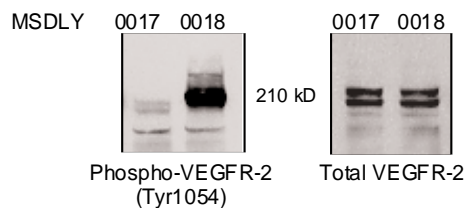
### MSD MULTI-ARRAY Assay Results

The figure below illustrates typical lysate titrations for MSDLY0017 (pVEGFR-2 negative) and MSDLY0018 (pVEGFR-2 positive) cell lysates using the MSD MULTI-ARRAY Phospho-VEGFR-2 Whole Cell Lysate Kit. The results are presented as a ratio of the signals obtained with pVEGFR-2 positive and pVEGFR-2 negative lysates. The signal ratios for phospho-VEGFR-2 increase with the amount of lysate. The representative results shown below are for demonstration purposes only and individual results may vary depending upon experimental application.



### Traditional Western Blot Results

MSDLY0017 and MSDLY0018 whole cell lysates (20 µg each) were analyzed by Western Blot with phospho-specific VEGFR-2 and total VEGFR-2 antibodies.



FOR RESEARCH USE ONLY. NOT FOR USE IN DIAGNOSTIC OR THERAPEUTIC PROCEDURES.

20219-v1-2010Feb

<sup>1</sup> HEK293 cells stably transfected with human KDR