

MSD[®] MULTI-SPOT Assay System

Phospho-STAT4 (Tyr693) Kit

1-Plate Kit

K150PAD-1

5-Plate Kit

K150PAD-2

25-Plate Kit

K150PAD-4



MSD Cell Signaling Pathway Assays

Phospho-STAT4 (Tyr693) Kit

This package insert must be read in its entirety before using this product.

FOR RESEARCH USE ONLY.

NOT FOR USE IN DIAGNOSTIC PROCEDURES.

MESO SCALE DISCOVERY®

A division of Meso Scale Diagnostics, LLC.

1601 Research Boulevard

Rockville, MD 20850-3173 USA

www.mesoscale.com

MESO SCALE DISCOVERY, MESO SCALE DIAGNOSTICS, DISCOVERY WORKBENCH, MULTI-ARRAY, MULTI-SPOT, QUICKPLEX, SECTOR PR, SECTOR, SECTOR HTS, SULFO-TAG, www.mesoscale.com, SMALL SPOT (design), 96 WELL 1, 4, 7, & 10-SPOT (designs), 384 WELL 1 & 4-SPOT (designs), MSD, MSD (design), V-PLEX, STREPTAVIDIN GOLD, and SPOT THE DIFFERENCE are trademarks and/or service marks of Meso Scale Diagnostics, LLC.

© 2013 Meso Scale Diagnostics, LLC. All rights reserved.

Table of Contents

Introduction	4
Principle of the Assay	4
Reagents Supplied	5
Required Material and Equipment (not supplied)	5
Safety	6
Reagent Preparation	6
Sample Preparation	8
Protocol	9
Typical Data.....	10
Assay Components	11
References	11
Appendix: Suggested Cell Lysis Protocols	12
Summary Protocol	13
Plate Diagrams	15

Ordering Information

MSD Customer Service

Phone: 1-301-947-2085
Fax: 1-301-990-2776
Email: CustomerService@mesoscale.com

MSD Scientific Support

Phone: 1-301-947-2025
Fax: 1-240-632-2219 attn: Scientific Support
Email: ScientificSupport@mesoscale.com

Introduction

Signal transducer and activator of transcription 4 (STAT4) is a transcription factor that transduces interleukin-12, interleukin-23, and type-1 interferon cytokine signals in T-cells and monocytes.^{1,2} Following exposure to cytokines, the cytokine receptor-associated Janus kinases (JAK) phosphorylate tyrosine residues present on cytoplasmic STAT4 proteins. STAT4 phosphorylation at tyrosine residue 693 allows homodimerization through src homology 2 domains.³ Functional STAT4 dimers translocate into the nucleus and activate cytokine responsive gene transcription, leading to Th1 cell differentiation, monocyte activation, and interferon-gamma production.^{1,2} STAT4 contributes to autoimmune disorder pathogenesis and anti-viral immune responses.^{4,5}

Principle of the Assay

MSD phosphoprotein assays provide a rapid and convenient method for measuring the levels of protein targets within a single, small-volume sample. Phospho-STAT4 (Tyr693) is a sandwich immunoassay (Figure 1). MSD provides a plate pre-coated with capture antibodies. The user adds the sample and a solution containing detection antibodies conjugated with electrochemiluminescent labels (MSD SULFO-TAG™) over the course of one or more incubation periods. Analytes in the sample bind to capture antibodies immobilized on the working electrode surface; recruitment of the detection antibodies by the bound analytes completes the sandwich. The user adds an MSD buffer that provides the appropriate chemical environment for electrochemiluminescence and loads the plate into a SECTOR® Imager where a voltage applied to the plate electrodes causes the captured labels to emit light. The instrument measures the intensity of emitted light to provide a quantitative measure of analytes in the sample.

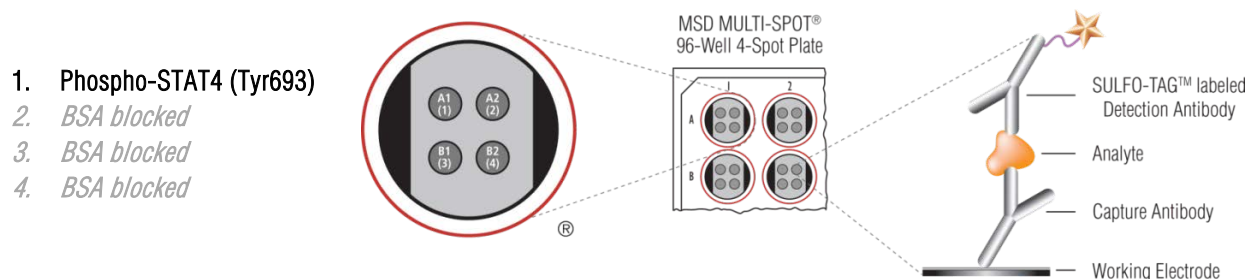


Figure 1. Spot diagram showing placement of analyte capture antibodies. The numbering convention for the different spots is maintained in the software visualization tools, on the plate packaging, and in the data files. A unique bar code label on each plate allows complete traceability back to MSD manufacturing records.

Reagents Supplied

Product Description	Storage	Quantity per Kit		
		K150PAD-1	K150PAD-2	K150PAD-4
MULTI-SPOT® 96-Well, 4-Spot Phospho-STAT4 (Tyr693) Plate N450PAA-1	2–8°C	1 plate	5 plates	25 plates
SULFO-TAG Anti-Total STAT4 Antibody ¹ (50X)	2–8°C	1 vial (75 µL)	1 vial (375 µL)	5 vials (375 µL ea)
Tris Lysis Buffer (1X) R60TX-3 (50 mL)	2–8°C	1 bottle	1 bottle	5 bottles
Tris Wash Buffer (10X) R61TX-2 (200 mL)	2–8°C	1 bottle	1 bottle	5 bottles
Phosphatase Inhibitor I (100X)	2–8°C	1 vial (0.1 mL)	1 vial (0.5 mL)	5 vials (0.5 mL ea)
Phosphatase Inhibitor II (100X)	2–8°C	1 vial (0.1 mL)	1 vial (0.5 mL)	5 vials (0.5 mL ea)
Protease Inhibitor Solution (100X)	2–8°C	1 vial (0.1 mL)	1 vial (0.5 mL)	5 vials (0.5 mL ea)
Blocker D-M ² (2%)	≤-10°C	1 vial (0.2 mL)	1 vial (1.8 mL)	5 vials (1.8 mL ea)
Blocker D-R ² (10%)	≤-10°C	1 vial (0.05 mL)	1 vial (0.2 mL)	5 vials (0.2 mL ea)
Blocker A (dry powder) R93BA-4 (15 gm)	RT	1 vial	1 vial	1 vial
Read Buffer T (4X) R92TC-3 (50 mL)	RT	1 bottle	1 bottle	5 bottles

Required Material and Equipment (not supplied)

- Appropriately sized tubes and bottles for reagent preparation
- Microcentrifuge tubes for preparing serial dilutions
- Liquid handling equipment for desired throughput, capable of dispensing 10 to 150 µL/well into a 96-well plate
- Plate washing equipment: automated plate washer or multichannel pipette
- Adhesive plate seals
- Microtiter plate shaker
- Deionized water

¹ SULFO-TAG–conjugated detection antibodies should be stored in the dark.

² Blockers D-M and D-R can tolerate up to 5 freeze-thaw cycles. Alternatively, aliquots of Blockers D-M and D-R can be stored at 2–8°C up to 1 month.

Safety

Use safe laboratory practices and wear gloves, safety glasses, and lab coats when handling kit components. Handle and dispose of all hazardous samples properly in accordance with local, state, and federal guidelines.

Additional safety information is available in the product Material Safety Data Sheet, which can be obtained from MSD Customer Service.

Reagent Preparation

Prepare Tris Wash Buffer

Dilute the 10X Tris Wash Buffer to 1X as shown below. Tris Wash Buffer (1X) will be used throughout the assay to make additional reagents and to wash plates. Approximately 350 mL per plate are required—more if using an automatic plate washer.

For 1 plate, combine:

- 35 mL of Tris Wash Buffer (10X)
- 315 mL of deionized water

Excess Tris Wash Buffer may be stored at room temperature in a tightly sealed container.

Prepare Blocking Solution-A

For 1 plate, combine:

- 600 mg of Blocker A (dry powder)
- 20 mL of 1X Tris Wash Buffer

Prepare Complete Lysis Buffer

Prepare complete lysis buffer just prior to use. The working solution is 1X.

For 1 plate, combine:

- 50 μ L of Protease Inhibitor Solution (100X stock)
- 50 μ L of Phosphatase Inhibitor Solution I (100X stock)
- 50 μ L of Phosphatase Inhibitor Solution II (100X stock)
- 4.85 mL of 1X Tris Lysis Buffer

Immediately place the complete lysis buffer on ice; it should be ice cold before use.

Prepare Antibody Dilution Buffer

For 1 plate, combine:

- 150 μ L 2% Blocker D-M
- 30 μ L 10% Blocker D-R
- 1 mL of blocking solution-A
- 1.82 mL of 1X Tris Wash Buffer

Set aside on ice.

Prepare Detection Antibody Solution

MSD provides detection antibody as a 50X stock solution. The working detection antibody solution is 1X.

For 1 plate, combine:

- 60 μ L of 50X SULFO-TAG Anti-Total STAT4 Antibody
- 2.94 mL of cold antibody dilution buffer

Prepare Read Buffer

MSD provides Read Buffer T as a 4X stock solution. The working solution is 1X.

For 1 plate, combine:

- 5 mL of Read Buffer T (4X)
- 15 mL of deionized water

You may prepare diluted read buffer in advance and store it at room temperature in a tightly sealed container.

Prepare MSD Plate

MSD plates are pre-coated with capture antibodies (Figure 1) and exposed to a proprietary stabilizing treatment to ensure the integrity and stability of the immobilized antibodies. Plates can be used as delivered; no additional preparation (e.g., pre-wetting) is required.

Sample Preparation

Most lysis buffers and sample matrices are compatible with MSD plates, although high concentrations of denaturing reagents should be avoided. Keep SDS and other ionic detergents to a concentration of 0.1% or less in the sample applied to the well and avoid reducing agents (DTT >1mM). Please contact MSD Scientific Support if you have any questions about lysate preparation options.

Analysis of proteins in their activated state (i.e. phosphorylated) usually requires stimulation prior to cell lysis. Verify cell stimulation and sample preparation prior to using this kit.

Perform all manipulations on ice; keep PBS wash buffer and complete lysis buffer ice cold. Cell concentrations for lysis can range from 0.5 to 5×10^7 cells per mL of lysis buffer. Protein yields will vary by cell line. To get your desired final protein concentration, you will need to optimize the number of cells used and the amount of complete lysis buffer added. Depending on the stability of the target in the matrix, you may need additional protease and phosphatase inhibitors in the matrix or diluent.

MSD provides suggested cell lysis protocols in the appendix; however, specific cell types or targets may benefit from alternative buffer components or techniques, depending upon the particular research application.

Protocol

1. **Block Plate:** Add 150 μL of blocking solution A to each well. Seal the plate with an adhesive plate seal and incubate for 1 hour with vigorous shaking (300–1000 rpm) at room temperature.

Prepare complete lysis buffer immediately prior to sample dilution.

2. **Prepare Positive and Negative Cell Lysates:** Thaw cell lysate samples on ice and dilute them immediately before use in ice cold complete lysis buffer. Keep on ice during all manipulations and discard any unused thawed material.

Lysate samples should be diluted to a working concentration of 3.12–200 $\mu\text{g}/\text{mL}$ using complete lysis buffer as prepared above. This will provide 0.078–5.0 μg of lysate per well.

You may prepare a dilution series at this point if desired.

3. **Wash and Add Samples:** Wash the plate 3 times with 150–300 $\mu\text{L}/\text{well}$ of Tris Wash Buffer. Add 25 μL of sample (standards, controls, or unknowns) per well. Seal the plate with an adhesive plate seal and incubate for 1 hour with vigorous shaking (300–1000 rpm) at room temperature.

You may prepare detection antibody solution during incubation.

4. **Wash and Add Detection Antibody Solution:** Wash the plate 3 times with 150–300 $\mu\text{L}/\text{well}$ of Tris Wash Buffer T. Add 25 μL of detection antibody solution to each well. Seal the plate with an adhesive plate seal and incubate for 1 hour with vigorous shaking (300–1000 rpm) at room temperature.

You may prepare diluted read buffer during incubation.

5. **Wash and Read:** Wash the plate 3 times with 150–300 $\mu\text{L}/\text{well}$ of Tris Wash Buffer. Add 150 μL of 1X Read Buffer T to each well. Analyze the plate on the SECTOR Imager. No incubation in read buffer is required.

Notes

Shaking the plate typically accelerates capture at the working electrode.

Store solutions containing MSD Blocker A at 2–8°C; discard after 14 days.

If working with purified protein, only a few nanograms per well will generally provide a strong assay signal. Purified recombinant proteins may exhibit differences in both signal and background as compared to native proteins in cell lysates.

Samples, including cell lysates, may be used neat or diluted.

MSD recommends preparing serial dilutions in microcentrifuge tubes or a separate 96-well polypropylene plate.

The amount of sample required for a given assay will depend on the abundance of the analyte in the matrix and the affinities of the antibodies used.

You may keep excess diluted read buffer in a tightly sealed container at room temperature for later use.

Bubbles introduced when adding read buffer will interfere with plate imaging and produce unreliable data. Use reverse pipetting technique to avoid creating bubbles.

Due to the varying nature of each research application, you should assess assay stability before allowing plates to sit with read buffer for extended periods.

Typical Data

Representative results for the Phospho-STAT4 (Tyr693) Kit are illustrated below. The signal and ratio values provided are examples; individual results will vary depending upon the samples tested. Western blot analyses of each lysate type are shown for comparison. Growing human T cells were starved for 30 minutes (treatment 1) or starved for 30 minutes then co-incubated with IL-12 (10 ng/mL) and interferon-alpha (1000 U/mL) for 30 minutes (treatment 2). Whole cell lysates were added to MSD MULTI-SPOT 4-spot plates coated with anti-Phospho-STAT4 (Tyr693) antibody on one of the four spatially distinct electrodes in each well. Phospho-STAT4 (Tyr693) was detected with anti-Total STAT4 antibody conjugated with MSD SULFO-TAG reagent.

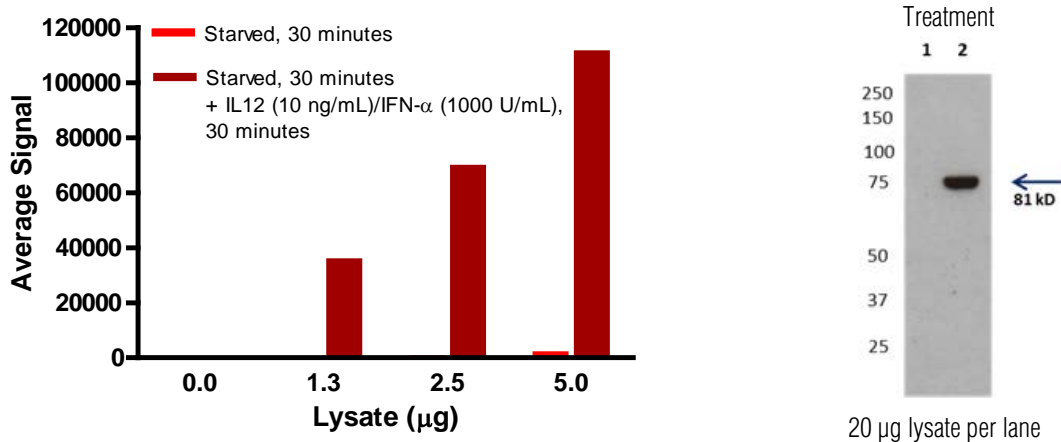


Figure 2: Sample data generated with the Phospho-STAT4 (Tyr693) assay. Increased signal is observed with the titration of lysates from treatment 2 [starved for 30 minutes and then co-incubated with IL-12 (10 ng/mL) and interferon-alpha (1000 U/mL) for 30 minutes]. Signal for lysates starved for 30 minutes (treatment 1) remains low throughout the titration. The Phospho-STAT4 (Tyr693) assay provides a quantitative measure of the data obtained with the traditional Western blot.

Lysate Titration

Data for positive and negative cell lysates using the Phospho-STAT4 (Tyr693) Kit are presented below.

Lysate (µg/well)	Treatment 1			Treatment 2		
	Average Signal	StdDev	%CV	Average Signal	StdDev	%CV
0	63	17	27.4	63	19	30.0
1.3	862	23	2.7	37 080	1706	4.6
2.5	1783	307	12.6	71 064	4264	6.0
5.0	3291	415	17.2	112 659	4619	4.1

Assay Components

The capture and detection antibodies used in this assay are listed below. They cross-react with human cell lysates.

Analyte	Source Species		Assay Generation
	MSD Capture Antibody	MSD Detection Antibody	
Phospho-STAT4 (Tyr693)	Mouse Monoclonal	Goat Polyclonal	B

References

1. Wurster AL, et al. The biology of STAT4 and STAT6. *Oncogene*. 2000; 19:2577-2584.
2. Korman BD, et al. STAT4: genetics, mechanisms, and implications for autoimmunity. *Curr Allergy Asthma Rep*. 2008 Sep;8(5):398-403.
3. Visconti R, et al. Importance of the MKK6/p38 pathway for interleukin-12-induced STAT4 serine phosphorylation and transcriptional activity. *Blood*. 2000 Sep 1;96(5):1844-52.
4. Svensson A, et al. STAT4 regulates anti-viral gamma interferon responses and recurrent disease during herpes simplex virus 2 infection. *J Virol*. 2012 Sep;86(17):9409-15.
5. Cheng X, et al. Adiponectin induces pro-inflammatory programs in human macrophages and CD4+ T Cells. *J Biol Chem*. 2012 Oct 26;287(44):36896-904.

Appendix: Suggested Cell Lysis Protocols

Preparation in Culture Flask or Petri Dish

Suspension Cells. Pellet cells by centrifugation at 500g for 3 minutes at 2–8°C. Discard supernatant and wash the pellet once with cold PBS. Pellet cells again, discard supernatant, and resuspend in complete lysis buffer at $1\text{--}5 \times 10^7$ cells per mL. Incubate on ice for 30 minutes. (A shorter incubation time of 15 minutes may be adequate for many targets.) Clear cellular debris from the lysate by centrifuging ($\geq 10\,000g$) for 10 minutes at 2–8°C. Discard the pellet and determine the protein concentration in the lysate using a detergent-compatible protein assay such as a bicinchoninic acid (BCA) assay. Unused lysates should be aliquoted, quickly frozen in a dry ice-ethanol bath, and stored at $\leq -70^\circ\text{C}$.

Adherent Cells. All volumes given are for cells plated on 15 cm dishes. Remove media from the dish and wash cells once with 5 mL cold PBS. Add 2 mL PBS to each dish, scrape the cells from the surface of the dish, and transfer into 15 mL conical tubes. Pellet the cells by centrifugation at 500g for 3 minutes at 2–8°C. Discard supernatant and resuspend cells in 0.5–2 mL of complete lysis buffer per dish. (Alternatively, cells can be lysed by adding 1–2 mL of complete lysis buffer per 15 cm dish after completely removing the PBS wash buffer. Cell lysate can be collected by snapping the dish surface prior to the clarifying spin.) Incubate on ice for 30 minutes. A shorter incubation time of 15 minutes may be adequate for many targets. Clear cellular debris from the lysate by centrifuging ($\geq 10\,000g$) for 10 minutes at 2–8°C. Discard the pellet and determine protein concentration in the lysate using a detergent compatible protein assay such as BCA. Unused lysates should be aliquoted, quickly frozen in a dry ice-ethanol bath, and stored at $\leq -70^\circ\text{C}$.

Preparation in 96-well Culture Plate

Successful adaptation to a 96-well culture format depends on cell type and target. First, determine the number of cells of each cell type to be plated per well. MSD generally recommends plating concentrations ranging from 1×10^4 to 10^5 cells per well; however, the optimal concentrations will vary depending on cell line used.

Suspension Cells. You may lyse many cell types without removing growth medium. For flat bottom plates, design the experiment so that the final suspension cell volume per well is such that a concentrated complete lysis buffer (prepared by the user) can be added to the well to achieve a final 1X lysis buffer concentration in the well. For example, 40 μL of 5X complete lysis buffer added to a well containing 160 μL of cell culture medium would provide a 1X concentration of complete lysis buffer.

For conical microwell plates, perform lysis by pelleting the cells, removing most of the growth medium, and adding a constant amount of 1X complete lysis buffer.

Adherent Cells. Plate cells on coated tissue culture plates to reduce variability due to cells lost as growth medium is removed. Treat cells as desired. Gently aspirate growth medium from the microwell plate to avoid disrupting the cell monolayer. A PBS wash step is not required and can introduce variability as cells may detach during the wash step. Add 100 μL of 1X complete lysis buffer per well. You may modify lysis volume for different cell types or applications.

You will need to determine the optimum cell lysis time. Some targets are immediately available for detection. Other targets may require an incubation step at room temperature or on ice with gentle agitation.

Carefully pipet cell lysate onto prepared plate and proceed with assay protocol. Note: It is important to transfer a constant volume and to avoid introducing air bubbles by pipetting too vigorously.

Summary Protocol

Phospho-STAT4 (Tyr693) Kit

*MSD provides this summary protocol for your convenience.
Please read the entire detailed protocol prior to performing
the Phospho-STAT4 (Tyr693) assay.*

Reagent Preparation

Prepare Tris Wash Buffer.

Prepare blocking solution.

Prepare antibody dilution buffer.

Prepare detection antibody solution by diluting 50X detection antibody 50-fold in antibody dilution buffer.

Prepare 1X Read Buffer T by diluting 4X Read Buffer T 4-fold with deionized water.

Step 1: Block Plate

Add 150 μ L/well of blocking solution.

Incubate at room temperature with vigorous shaking (300–1000 rpm) for 1 hour.

Step 2: Prepare Samples

Prepare complete lysis buffer just prior to sample dilution.

Prepare positive and negative cell lysates and keep on ice until use.

Step 3: Wash and Add Samples

Wash plate 3 times with 150–300 μ L/well of Tris Wash Buffer.

Add 25 μ L/well of sample (standards, controls, or unknowns).

Incubate at room temperature with vigorous shaking (300–1000 rpm) for 1 hour.

Step 4: Wash and Add Detection Antibody Solution

Wash plate 3 times with 150–300 μ L/well of Tris Wash Buffer.

Add 25 μ L/well of 1X detection antibody solution.

Incubate at room temperature with vigorous shaking (300–1000 rpm) for 1 hour.

Step 5: Wash and Read Plate

Wash plate 3 times with 150–300 μ L/well of Tris Wash Buffer.

Add 150 μ L/well of 1X Read Buffer T.

Analyze plate on SECTOR Imager within 5 minutes of adding read buffer.

Plate Diagrams

