

Meso Scale Discovery® Whole Cell Lysate Set

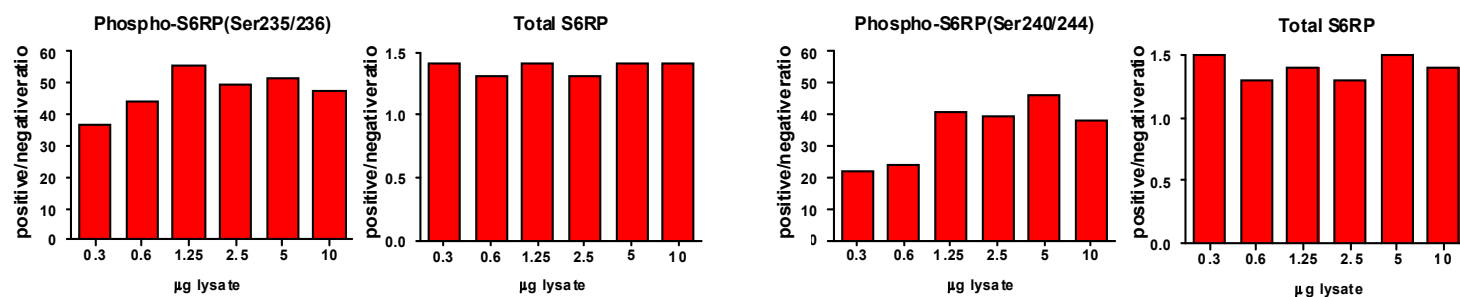
Phospho-S6RP

Catalog No:	C11DF-1
Contents:	2 x 100 µg MSDLY0034 pS6RP Kinase Negative Cell Lysate Cell lysate from Jurkat cells treated with 50 µM LY294002 for 2.5 hours to reduce basal S6RP phosphorylation 2 x 100 µg MSDLY0035 pS6RP Kinase Positive Cell Lysate Cell lysate from Jurkat cells treated with 200 nM PMA for 15 minutes to stimulate S6RP phosphorylation
Concentration:	2 mg/mL in MSD® Complete Tris Lysis Buffer
Volume:	2 vials (50 µL) negative lysate 2 vials (50 µL) positive lysate
Preparation:	Following cell treatment, Jurkat cell lysates were prepared on ice in MSD Complete Tris Lysis Buffer. Cell debris was cleared by centrifugation.
Storage:	Lysates should be stored at -80°C. Lysates will retain approximately 90% of activity after a single round of freeze thaw if handled properly (thawed on ice and immediately refrozen in smaller aliquots).
Quality Control:	Lysates have been tested for performance in Western Blot and MSD MULTI-SPOT® Assays.

MSD MULTI-SPOT Assay Results

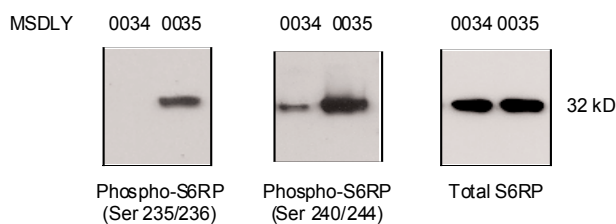
The figure below illustrates typical lysate titrations for MSDLY0034 (pS6RP negative) and MSDLY0035 (pS6RP positive) cell lysates using the MSD MULTI-SPOT Phospho (Ser235/236)/Total S6RP and Phospho (Ser240/244)/Total S6RP Whole Cell Lysate Kits. The results are presented as a ratio of the signals obtained with pS6RP positive and pS6RP negative lysates. The phospho-S6RP signal ratios increase with amount of lysate. The total S6RP remains at a constant level close to one throughout the titration. The representative results shown below are for demonstration purposes only and individual results may vary depending upon experimental application.

MSD MULTI-SPOT Assays



Traditional Western Blot Results

MSDLY0033 and MSDLY0034 whole cell lysates (20 µg each) were analyzed by Western Blot with phospho-specific and total S6RP antibodies.



FOR RESEARCH USE ONLY. NOT FOR USE IN DIAGNOSTIC OR THERAPEUTIC PROCEDURES.

20210-v1-2008May