

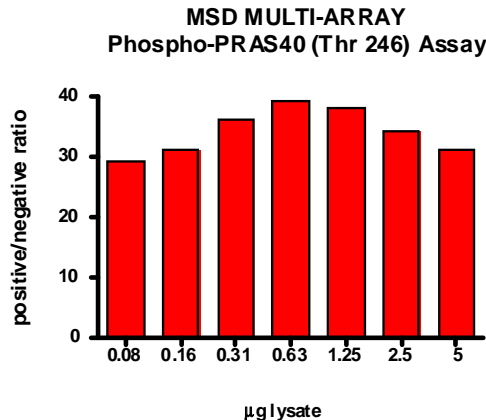
MESO SCALE DISCOVERY® Whole Cell Lysate Set

Phospho-PRAS40 (Thr 246)

Catalog No:	C10JZ-1
Contents:	2 x 100 µg MSDLY0066 pPRAS40 Negative Cell Lysate Cell lysate from MCF-7 cells treated with 50 µM LY294002 for 2.5 hours 2 x 100 µg MSDLY0067 pPRAS40 Positive Cell Lysate Cell lysate from MCF-7 cells treated with 100 nM IGF-1 for 20 minutes to stimulate phosphorylation
Concentration:	2 mg/mL in MSD® Complete Tris Lysis Buffer
Volume:	2 vials (50 µL) negative lysate 2 vials (50 µL) positive lysate
Preparation:	Following cell treatment, MCF-7 cell lysates were prepared on ice in MSD Complete Tris Lysis Buffer. Cell debris was cleared by centrifugation.
Storage:	Lysate should be stored at ≤ -70°C. Lysates will retain approximately 90% of activity after a single round of freeze thaw if handled properly (thawed on ice and immediately refrozen in smaller aliquots).
Quality Control:	Lysates have been tested for performance in Western Blot and MSD MULTI-ARRAY® Assays.

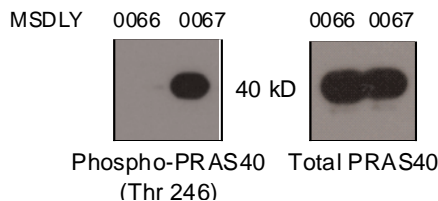
MSD MULTI-ARRAY Assay Results

The figure below illustrates a typical titration for MSDLY0066 (pPRAS40 negative) and MSDLY0067 (pPRAS40 positive) cell lysates with the MSD MULTI-ARRAY Phospho-PRAS40 (Thr 246) Whole Cell Lysate Kit. The results are presented as a ratio of the signals obtained with pPRAS40 positive and pPRAS40 negative lysates. The phospho-PRAS40 signal ratios remain constant with increasing amounts of lysate. The representative results shown below are for demonstration purposes only and individual results may vary depending upon experimental application.



Traditional Western Blot Results

MSDLY0066 and MSDLY0067 whole cell lysates (20 µg each) were analyzed by Western Blot with phospho specific PRAS40 and total PRAS40 antibodies.



FOR RESEARCH USE ONLY. NOT FOR USE IN DIAGNOSTIC PROCEDURES.

20236-v1-2010Aug