

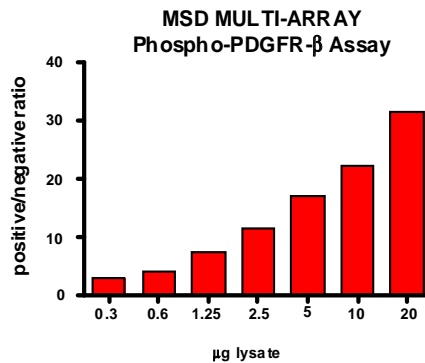
Meso Scale Discovery® Whole Cell Lysate Set

Phospho-PDGFR- β (Tyr 751)

| | |
|-------------------------|---|
| Catalog No: | C11DV-1 |
| Contents: | 2 x 100 μ g MSDLY0026 pPDGFR- β Kinase Negative Cell Lysate Cell lysate from serum deprived NIH3T3 cells 2 x 100 μ g MSDLY0028 pPDGFR- β Kinase Positive Cell Lysate Cell lysate from serum deprived NIH3T3 cells treated with 50 ng/mL PDGF-BB for 10 minutes to stimulate PDGFR- β phosphorylation |
| Concentration: | 2 mg/mL in MSD® Complete Tris Lysis Buffer |
| Volume: | 2 vials (50 μ L) negative lysate 2 vials (50 μ L) positive lysate |
| Preparation: | Following cell treatment, NIH3T3 cell lysates were prepared on ice in MSD Complete Tris Lysis Buffer. Cell debris was cleared by centrifugation. |
| Storage: | Lysates should be stored at -80°C. Lysates will retain approximately 90% of activity after a single round of freeze thaw if handled properly (thawed on ice and immediately refrozen in smaller aliquots). |
| Quality Control: | Lysates have been tested for performance in Western Blot and MSD MULTI-ARRAY® Assays. |

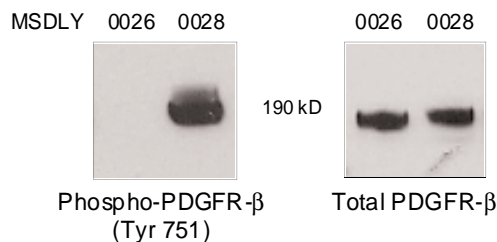
MSD MULTI-ARRAY Assay Results

The figure below illustrates typical lysate titrations for MSDLY0026 (pPDGFR- β negative) and MSDLY0028 (pPDGFR- β positive) cell lysates using the MSD MULTI-ARRAY Phospho PDGFR- β Whole Cell Lysate Kit. The results are presented as a ratio of the signals obtained with pPDGFR- β positive and pPDGFR- β negative lysates. The phospho-PDGFR- β signal ratios increase with the amount of lysate. The representative results shown below are for demonstration purposes only and individual results may vary depending upon experimental application.



Traditional Western Blot Results

MSDLY0026 and MSDLY0028 whole cell lysates (20 μ g each) were analyzed by Western Blot with phospho-specific PDGFR- β and total PDGFR- β antibodies.



FOR RESEARCH USE ONLY. NOT FOR USE IN DIAGNOSTIC OR THERAPEUTIC PROCEDURES.

20208-v1-2010Feb