

MSD[®] MAP Kinase Whole Cell Lysate Set



Ordering information

MSD Customer Service
Phone: 1-301-947-2085
Fax: 1-301-990-2776
Email: CustomerService@mesoscale.com

Scientific support

Phone: 1-301-947-2025
Email: ScientificSupport@mesoscale.com

Company Address

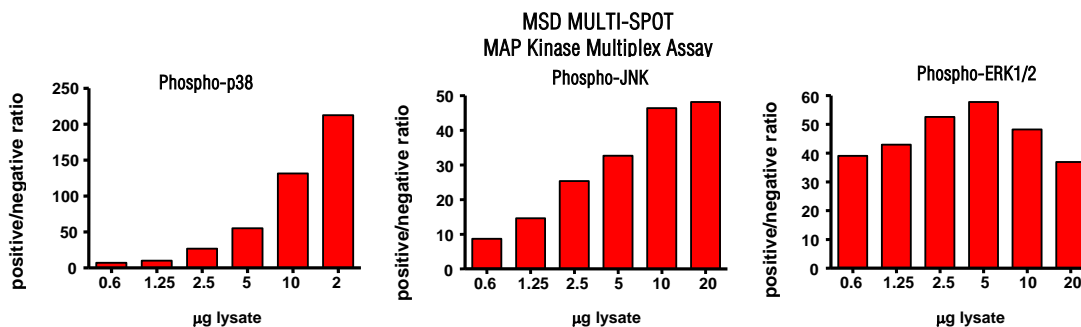
MESO SCALE DISCOVERY[®]
A division of
Meso Scale Diagnostics, LLC.
9238 Gaither Road
Gaithersburg, MD 20877 USA

www.mesoscale.com[®]

Catalog No	C1101-1
Contents	2 x 100 µg MSDLY0021 MAP Kinase Negative Cell Lysate Cell lysate from growing Jurkat treated cells treated with 1 µM rapamycin for 3 hours to inhibit phosphorylation 2 x 100 µg MSDLY0052 MAP Kinase Positive Cell Lysate Cell lysate from growing Jurkat cells treated with 50 nM calyculin A and 200 nM PMA for 15 minutes to stimulate phosphorylation
Concentration	2 mg/mL in MSD complete tris lysis buffer
Volume	2 vials (50 µL) negative lysate 2 vials (50 µL) positive lysate
Preparation	Following cell treatment, Jurkat cell lysates were prepared on ice in MSD complete lysis buffer. Cell debris was cleared by centrifugation.
Storage	Lysates should be stored at ≤-70°C and thawed on ice for a limited amount of time prior to use. Once diluted, any unused lysates should be discarded. If desired, lysates can be separated into single use aliquots and promptly refrozen at ≤-70°C. The performance of the refrozen material should be determined by the user for each target.
Quality Control	Lysates have been tested for performance in Western blot and MSD MULTI-SPOT [®] assays.

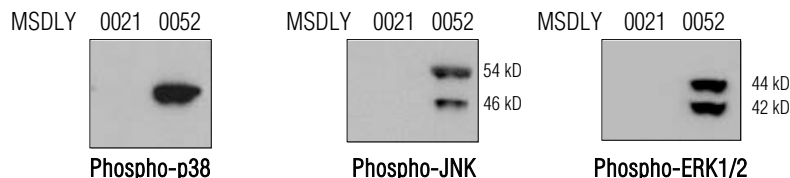
MSD MULTI-SPOT Assay Results

The figure below illustrates typical lysate titrations for MSDLY0021 (negative) and MSDLY0052 (positive) using the MSD MAP Kinase Whole Cell Lysate Kit. The results are presented as a ratio of the signals obtained with positive and negative lysates. In the MAP Kinase multiplex assay, the signal ratios for pp38, pJNK and pERK1/2 all increase, to a point, as the amount of lysate increases. The representative results shown below are for demonstration purposes only, individual results may vary depending upon experimental application.



Traditional Western Blot Results

MSDLY0021 and MSDLY0052 whole cell lysates (20 µg each) were analyzed by Western blot with phospho-specific p38 (Thr180/Tyr182), JNK (Thr183/Tyr185) and ERK1/2 (Thr202/204) antibodies.



**FOR RESEARCH USE
ONLY. NOT FOR USE
IN DIAGNOSTIC
PROCEDURES.**

MESO SCALE DISCOVERY, MESO SCALE DIAGNOSTICS, WWW.MESOSCALE.COM, MSD, MSD (DESIGN), DISCOVERY WORKBENCH, QUICKPLEX, MULTI-ARRAY, MULTI-SPOT, SULFO-TAG, SECTOR, SECTOR HTS, SECTOR PR, SMALL SPOT (DESIGN) and SPOT THE DIFFERENCE are trademarks and/or service marks of Meso Scale Diagnostics, LLC. © 2011 Meso Scale Diagnostics, LLC. All rights reserved.



www.mesoscale.com[®]

20197-v3-2011Nov