

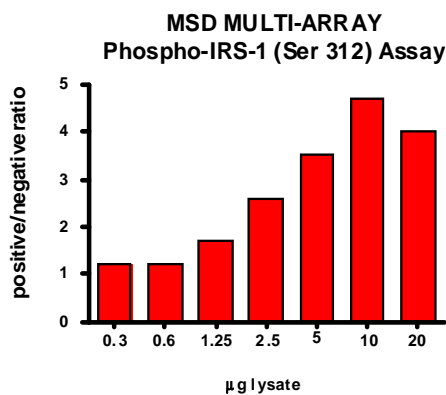
Meso Scale Discovery® Whole Cell Lysate Set

Phospho-IRS-1 (Ser 312)

| | |
|-------------------------|---|
| Catalog No: | C10HL-1 |
| Contents: | 2 x 100 µg MSDLY0077 pIRS-1 Negative Cell Lysate Cell lysate from serum deprived MCF-7 cells 2 x 100 µg MSDLY0078 pIRS-1 Positive Cell Lysate Cell lysate from serum deprived MCF-7 cells treated with 100nM IGF-1 for 20 minutes to stimulate IRS-1 phosphorylation |
| Concentration: | 2 mg/mL in MSD® Complete Tris Lysis Buffer |
| Volume: | 2 vials (50 µL) negative lysate 2 vials (50 µL) positive lysate |
| Preparation: | Following cell treatment, MCF-7 cell lysates were prepared on ice in MSD Complete Tris Lysis Buffer. Cell debris was cleared by centrifugation. |
| Storage: | Lysates should be stored at -80°C. Lysates will retain approximately 90% of activity after a single round of freeze thaw if handled properly (thawed on ice and immediately refrozen in smaller aliquots). |
| Quality Control: | Lysates have been tested for performance in Western Blot and MSD MULTI-ARRAY® Assays. |

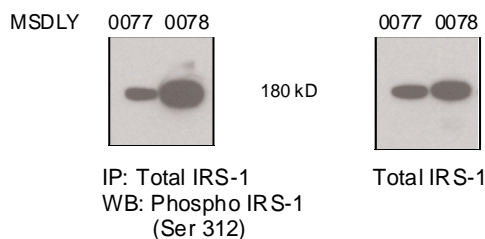
MSD MULTI-ARRAY Assay Results

The figure below illustrates typical lysate titrations for MSDLY0077 (pIRS-1 negative) and MSDLY0078 (pIRS-1 positive) cell lysates using the MSD MULTI-ARRAY Phospho IRS-1(Ser312) Whole Cell Lysate Kit. The results are presented as a ratio of the signals obtained with pIRS-1 positive and pIRS-1 negative lysates. The phospho-IRS-1 signal ratios increase with the amount of lysate. The representative results shown below are for demonstration purposes only and individual results may vary depending upon experimental application.



Traditional Western Blot Results

MSDLY0077 and MSDLY0078 whole cell lysates (200 µg each) were analyzed by immunoprecipitation using a total antibody for IP and phospho-specific antibody for western blot. Whole cell lysates (20 µg) were analyzed using Total IRS-1 antibody.



FOR RESEARCH USE ONLY. NOT FOR USE IN DIAGNOSTIC OR THERAPEUTIC PROCEDURES.

20204-v1-2010Feb