

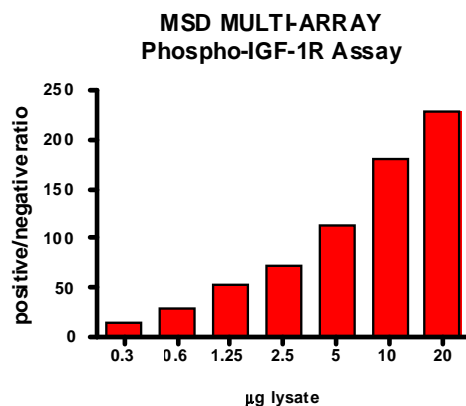
Meso Scale Discovery® Whole Cell Lysate Set

Phospho-IGF-1R (Tyr 751)

Catalog No:	C11CH-1
Contents:	2 x 100 µg MSDLY0015 pIGF-1R Negative Cell Lysate Cell lysate from serum deprived A431 cells 2 x 100 µg MSDLY0057 pIGF-1R Positive Cell Lysate Cell lysate from serum deprived A431 cells pretreated with 1 mM sodium vanadate followed by an IGF-1 stimulation (100 nM) for 10 minutes to stimulate IGF-1R phosphorylation
Concentration:	2 mg/mL in MSD® Complete Tris Lysis Buffer
Volume:	2 vials (50 µL) negative lysate 2 vials (50 µL) positive lysate
Preparation:	Following cell treatment, A431 cell lysates were prepared on ice in MSD Complete Tris Lysis Buffer. Cell debris was cleared by centrifugation.
Storage:	Lysates should be stored at -80°C. Lysates will retain approximately 90% of activity after a single round of freeze thaw if handled properly (thawed on ice and immediately refrozen in smaller aliquots).
Quality Control:	Lysates have been tested for performance in Western Blot and MSD MULTI-ARRAY® Assays.

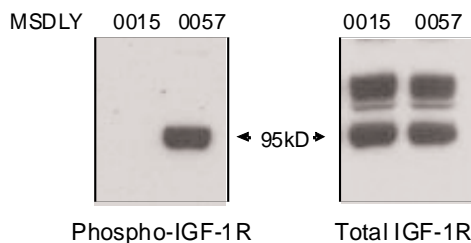
MSD MULTI-ARRAY Assay Results

The figure below illustrates a typical titration for MSDLY0015 (pIGF-1R negative) and MSDLY0057 (pIGF-1R positive) cell lysates with the MSD MULTI-ARRAY Phospho-IGF-1R Whole Cell Lysate Kit. The results are presented as a ratio of the signals obtained with pIGF-1R positive and pIGF-1R negative lysates. The phospho-IGF-1R signal ratios increase with the amount of lysate. The representative results shown below are for demonstration purposes only and individual results may vary depending upon experimental application.



Traditional Western Blot Results

MSDLY0015 and MSDLY0057 whole cell lysates (20 µg each) were analyzed by Western Blot with phospho (tyrosine) specific and total IGF-1R antibodies.



FOR RESEARCH USE ONLY. NOT FOR USE IN DIAGNOSTIC OR THERAPEUTIC PROCEDURES.

20214-v1-2010Feb