

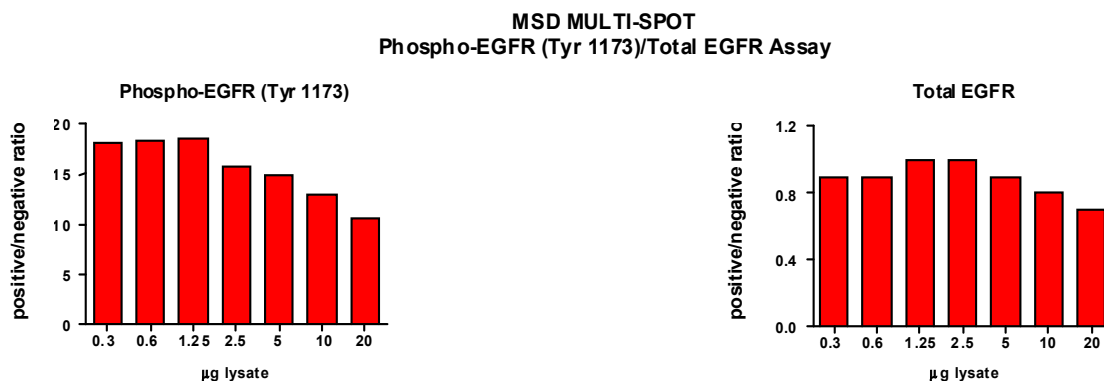
Meso Scale Discovery® Whole Cell Lysate Set

Phospho-EGFR

Catalog No:	C11CI-1
Contents:	2 x 100 µg MSDLY0039 pEGFR Negative Control Cell Lysate Cell lysate from serum deprived A431 cells treated with 1 µM Compound 56 for 2.5 hours to inhibit EGFR phosphorylation 2 x 100 µg MSDLY0016 pEGFR Positive Control Cell Lysate Cell lysate from serum deprived A431 cells treated with 100 ng/mL EGF for 10 minutes to stimulate EGFR phosphorylation
Concentration:	2 mg/mL in MSD® Complete Tris Lysis Buffer
Volume:	2 vials (50 µL) negative lysate 2 vials (50 µL) positive lysate
Preparation:	Following cell treatment, A431 cell lysates were prepared on ice in MSD Complete Tris Lysis Buffer.
Storage:	Lysates should be stored at -80°C. Lysates will retain approximately 90% of activity after a single round of freeze thaw if handled properly (thawed on ice and immediately refrozen in smaller aliquots).
Quality Control:	Lysates have been tested for performance in Western Blot and MSD MULTI-SPOT® Assays.

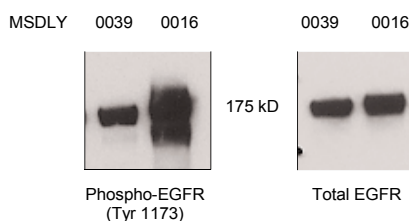
MSD MULTI-SPOT Assay Results

The figure illustrates typical titrations for MSDLY0039 (pEGFR negative) and MSDLY0016 (pEGFR positive) cell lysates with the MSD MULTI-SPOT Phospho-EGFR (Tyr 1173)/Total EGFR Whole Cell Lysate Kit. The results are presented as a ratio of the signals obtained with pEGFR positive and pEGFR negative lysates. The Phospho-EGFR (Tyr 1173) signal ratio remains constant with increasing amounts of lysate. The Total EGFR remains at a constant level close to one throughout the titration. The representative results shown below are for demonstration purposes only and individual results may vary depending upon experimental application.



Traditional Western Blot Results

MSDLY0039 and MSDLY0016 whole cell lysates (20 µg each) were analyzed by Western Blot with phospho-specific (Tyr 1173) and total EGFR antibodies.



FOR RESEARCH USE ONLY. NOT FOR USE IN DIAGNOSTIC OR THERAPEUTIC PROCEDURES.

20044-v2-2008May