

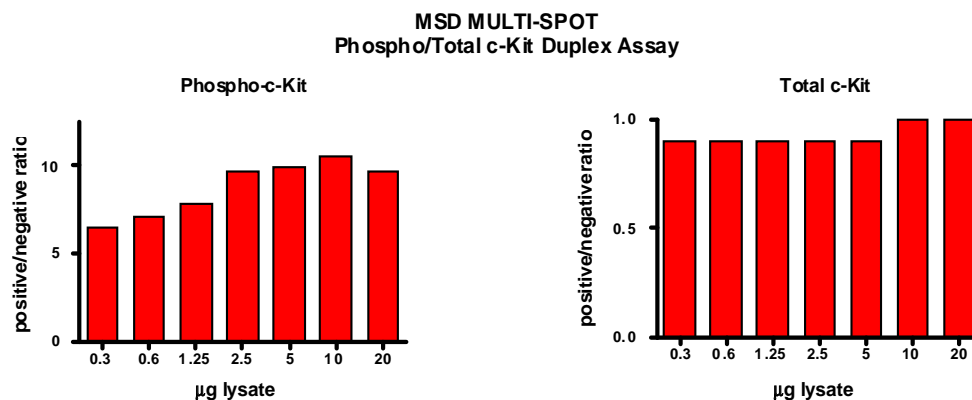
Meso Scale Discovery® Whole Cell Lysate Set

Phospho-c-Kit (Tyr 721)

Catalog No:	C11DP-1
Contents:	2 x 100 µg MSDLY0049 pc-Kit Negative Cell Lysate Cell lysate from serum deprived MO7e cells 2 x 100 µg MSDLY0050 pc-Kit Positive Cell Lysate Cell lysate from MO7e cells treated with 100 ng/mL SCF for 2 minutes to stimulate c-Kit phosphorylation
Concentration:	2 mg/mL in MSD® Complete Tris Lysis Buffer
Volume:	2 vials (50 µL) negative lysate 2 vials (50 µL) positive lysate
Preparation:	Following cell treatment, MO7e cell lysates were prepared on ice in MSD Complete Tris Lysis Buffer. Cell debris was cleared by centrifugation.
Storage:	Lysates should be stored at -80°C. Lysates will retain approximately 90% of activity after a single round of freeze thaw if handled properly (thawed on ice and immediately refrozen in smaller aliquots).
Quality Control:	Lysates have been tested for performance in Western Blot and MSD MULTI-SPOT® Assays.

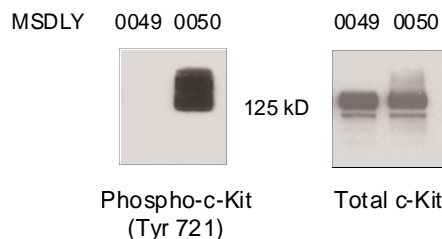
MSD MULTI-SPOT Assay Results

The figure below illustrates typical lysate titrations for MSDLY0049 (pc-Kit negative) and MSDLY0050 (pc-Kit positive) cell lysates using the MSD MULTI-SPOT Phospho/total-c-kit Whole Cell Lysate Kit. The results are presented as a ratio of the signals obtained with pc-Kit positive and pc-Kit negative lysates. The phospho-c-Kit signal ratios increase with the amount of lysate. The signal ratios for total c-Kit remain at a constant level close to one throughout the titration. The representative results shown below are for demonstration purposes only and individual results may vary depending upon experimental application.



Traditional Western Blot Results

MSDLY0049 and MSDLY0050 whole cell lysates (20 µg each) were analyzed by Western Blot with phospho-specific c-Kit and total c-Kit antibodies.



FOR RESEARCH USE ONLY. NOT FOR USE IN DIAGNOSTIC OR THERAPEUTIC PROCEDURES.

20209-v1-2010Feb