

Meso Scale Discovery® Whole Cell Lysate Set

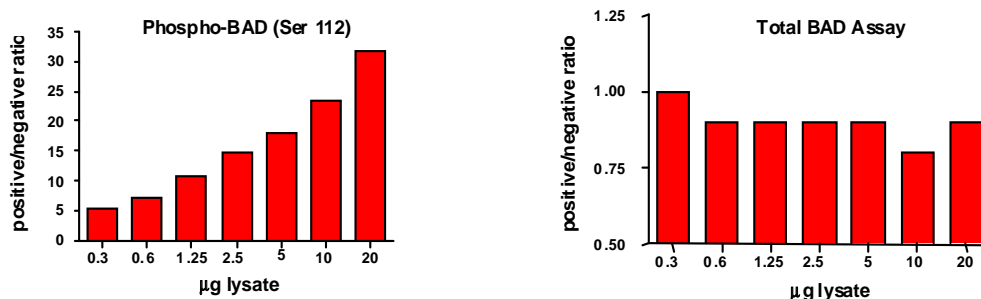
Phospho-BAD (Ser 112)

Catalog No:	C11CC-1
Contents:	2 x 100 µg MSDLY0036 pBAD Negative Cell Lysate Cell lysate from serum-deprived COS-7 cells treated with 1 µM staurosporine for 2 hours to inhibit BAD phosphorylation 2 x 100 µg MSDLY0014 pBAD Positive Cell Lysate Cell lysate from serum-deprived COS-7 cells treated with 200 nM PMA in complete medium for 1 hour to stimulate BAD phosphorylation
Concentration:	2 mg/mL in MSD® Complete Tris Lysis Buffer
Volume:	2 vials (50 µL) negative lysate 2 vials (50 µL) positive lysate
Preparation:	Following cell treatment, COS-7 cell lysates were prepared on ice in MSD Complete Tris Lysis Buffer. Cell debris was cleared by centrifugation.
Storage:	Lysates should be stored at -80°C. Phospho-BAD lysates will not tolerate a freeze thaw.
Quality Control:	Lysates have been tested for performance in Western Blot and MSD MULTI-SPOT® Assays.

MSD MULTI-SPOT Assay Results

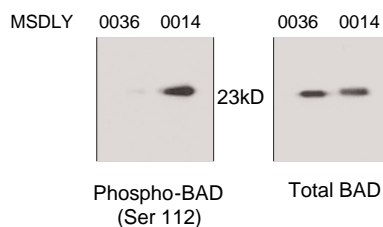
The figures below illustrate typical titrations for MSDLY0036 (pBAD negative) and MSDLY0014 (pBAD positive) cell lysates with the MSD MULTI-SPOT Phospho (Ser112)/Total BAD Duplex Whole Cell Lysate Kit. The results are presented as a ratio of the signals obtained with pBAD positive and pBAD negative lysates. The phospho-BAD signal ratios increase with the amount of lysates, and the signal ratios for total BAD remain at a constant level close to one throughout the titration. The representative results shown below are for demonstration purposes only and individual results may vary depending upon experimental application.

MSD MULTI-SPOT Phospho/Total BAD Assay



Traditional Western Blot Results

MSDLY0036 and MSDLY0014 whole cell lysates (20 µg each) were analyzed by Western Blot with phospho (Ser 112)-specific and total BAD antibodies.



FOR RESEARCH USE ONLY. NOT FOR USE IN DIAGNOSTIC OR THERAPEUTIC PROCEDURES.

20194-v1-2010Feb