

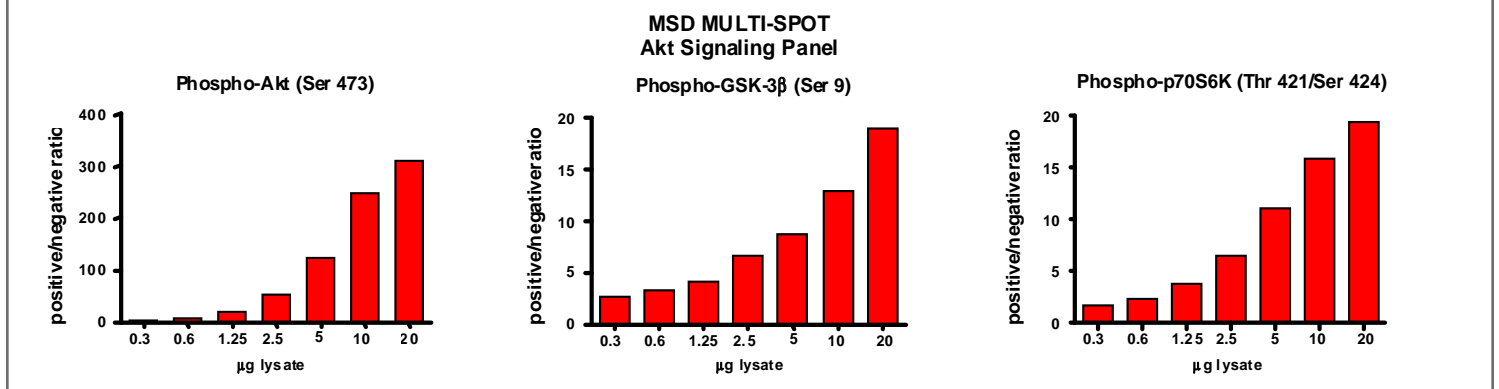
# Meso Scale Discovery® Whole Cell Lysate Set

## Akt Signaling (Phospho) Panel

<b>Catalog No:</b>	C1115-1
<b>Contents:</b>	2 x 100 µg MSDLY0006 pAkt/ pGSK-3β/ pp70S6K Negative Cell Lysate Cell lysate from growing Jurkat cells treated with 50 µM LY294002 and 1 µM staurosporine for 2.5 hours to inhibit phosphorylation  2 x 100 µg MSDLY0003 pAkt/ pGSK-3β/ pp70S6K Positive Cell Lysate Cell lysate from growing Jurkat cells teated with 200 nM PMA for 15 minutes to stimulate phosphorylation
<b>Concentration:</b>	2 mg/mL in MSD® Complete Tris Lysis Buffer
<b>Volume:</b>	2 vials (50 µL) negative lysate    2 vials (50 µL) positive lysate
<b>Preparation:</b>	Following cell treatment, Jurkat cell lysates were prepared on ice in MSD Complete Tris Lysis Buffer. Cell debris was cleared by centrifugation.
<b>Storage:</b>	Lysates should be stored at -80°C. Lysates will retain approximately 90% of activity after a single round of freeze thaw if handled properly (thawed on ice and immediately refrozen in smaller aliquots).
<b>Quality Control:</b>	Lysates have been tested for performance in Western Blot and MSD MULTI-SPOT® Assays.

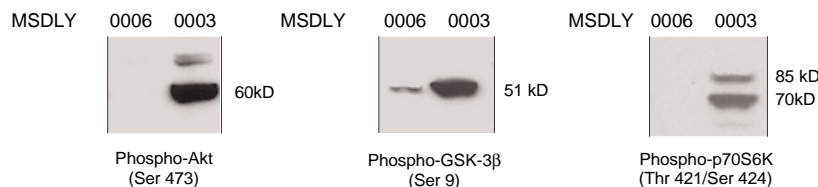
### MSD MULTI-SPOT Assay Results

The figure below illustrates typical lysate titrations for MSDLY0006 (negative) and MSDLY0003 (positive) using the MSD MULTI-SPOT Akt Signaling Panel Whole Cell Lysate Kit. The results are presented as a ratio of the signals obtained with phospho-Akt/phospho-GSK-3β/phospho-p70S6K positive and negative lysates. In all cases, the signal ratios increase with the amount of lysates. The representative results shown below are for demonstration purposes only and individual results may vary depending upon experimental application.



### Traditional Western Blot Results

MSDLY0006 and MSDLY0003 whole cell lysates (20 µg each) were analyzed by Western Blot with phospho-specific Akt (Ser 473), GSK-3β (Ser 9), p70S6K (Thr 421/Ser 424) antibodies.



FOR RESEARCH USE ONLY. NOT FOR USE IN DIAGNOSTIC OR THERAPEUTIC PROCEDURES.

20193-v1-2010Feb