

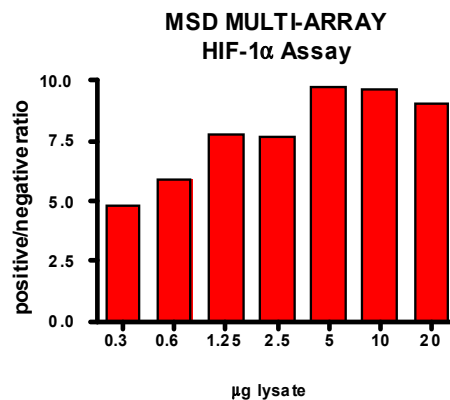
Meso Scale Discovery® Whole Cell Lysate Set

HIF-1 α

Catalog No:	C11DK-1
Contents:	2 x 100 μ g MSDLY0044 HIF-1 α Negative Control Cell Lysate Cell lysate from growing HeLa cells 2 x 100 μ g MSDLY0045 HIF-1 α Positive Control Cell Lysate Cell lysate from growing HeLa cells treated with 150 μ M Cobalt Chloride for 16 hours to stimulate HIF-1 α expression
Concentration:	2 mg/mL in MSD® Complete Tris Lysis Buffer
Volume:	2 vials (50 μ L) negative lysate 2 vials (50 μ L) positive lysate
Preparation:	Following cell treatment, HeLa cell lysates were prepared on ice in MSD Complete Tris Lysis Buffer. Cell debris was cleared by centrifugation.
Storage:	Lysates should be stored at -80°C. Lysates will retain approximately 90% of activity after a single round of freeze thaw if handled properly (thawed on ice and immediately refrozen in smaller aliquots).
Quality Control:	Lysates have been tested for performance in Western Blot and MSD MULTI-ARRAY® Assays.

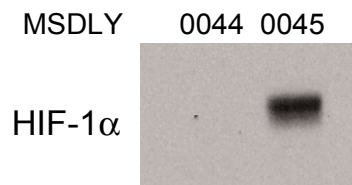
MSD MULTI-ARRAY Assay Results

The figure below illustrates a typical titration for MSDLY0044 (HIF-1 α negative) and MSDLY0045 (HIF-1 α positive) cell lysates with the MSD MULTI-ARRAY HIF-1 α Whole Cell Lysate Kit. Results are presented as a ratio of the signals obtained with HIF-1 α positive and HIF-1 α negative lysates. In the HIF-1 α singleplex assay, the total HIF-1 α signal ratio remains constant with increasing amounts of lysate. The representative results shown below are for demonstration purposes only and individual results may vary depending upon experimental application.



Traditional Western Blot Results

MSDLY0044 and MSDLY0045 whole cell lysates (20 μ g each) were analyzed by Western Blot with total HIF-1 α antibodies.



FOR RESEARCH USE ONLY. NOT FOR USE IN DIAGNOSTIC OR THERAPEUTIC PROCEDURES.

20048-v2-2008Mar