

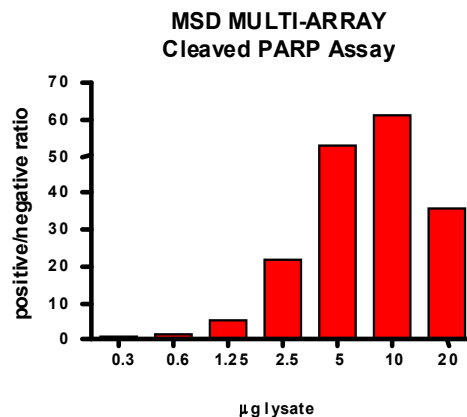
Meso Scale Discovery® Whole Cell Lysate Set

Cleaved PARP

Catalog No:	C11DE-1
Contents:	2 x 100 µg MSDLY0001 Cleaved PARP Negative Cell Lysate Cell lysate from growing Jurkat cells 2 x 100 µg MSDLY0031 Cleaved PARP Positive Cell Lysate Cell lysate from growing Jurkat cells treated with 25 µM etoposide for 18 hours to induce PARP cleavage
Concentration:	2 mg/mL in MSD® Complete Tris Lysis Buffer
Volume:	2 vials (50 µL) negative lysate 2 vials (50 µL) positive lysate
Preparation:	Following cell treatment, Jurkat cell lysates were prepared on ice in MSD Complete Tris Lysis Buffer. Cell debris was cleared by centrifugation.
Storage:	Lysates should be stored at -80°C. Lysates will retain approximately 90% of activity after a single round of freeze thaw if handled properly (thawed on ice and immediately refrozen in smaller aliquots).
Quality Control:	Lysates have been tested for performance in Western Blot and MSD MULTI-ARRAY® Assays.

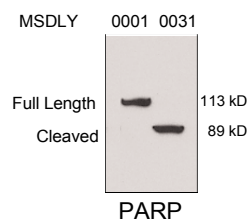
MSD MULTI-ARRAY Assay Results

The figure below illustrates a typical titration for MSDLY0001 (cleaved PARP negative) and MSDLY0031 (cleaved PARP positive) cell lysates with the MSD MULTI-ARRAY PARP (Cleaved) Whole Cell Lysate Kit. Results are presented as a ratio of the signals obtained with cleaved PARP positive and cleaved PARP negative lysates. In the cleaved PARP singleplex assay, the cleaved PARP signal ratio increases with the amount of lysates. The representative results shown below are for demonstration purposes only and individual results may vary depending upon experimental application.



Traditional Western Blot Results

MSDLY0001 and MSDLY0031 whole cell lysates (20 µg each) were analyzed by Western Blot with an antibody recognizing both full length and cleaved PARP.



FOR RESEARCH USE ONLY. NOT FOR USE IN DIAGNOSTIC OR THERAPEUTIC PROCEDURES.

20047-v1-2008Mar