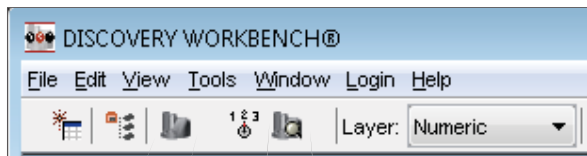


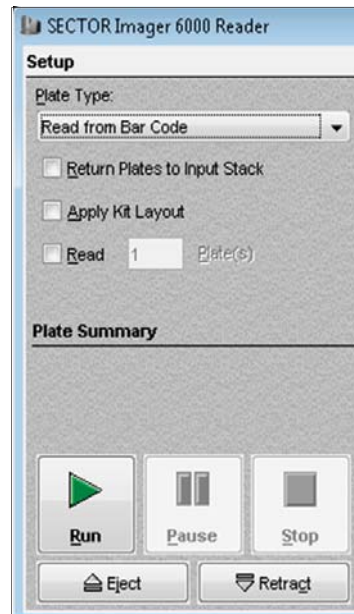
How to Read a Plate in DISCOVERY WORKBENCH® 4.0

Image Capture Toolbar



 Instrument Status

 Connect to Sector Imager



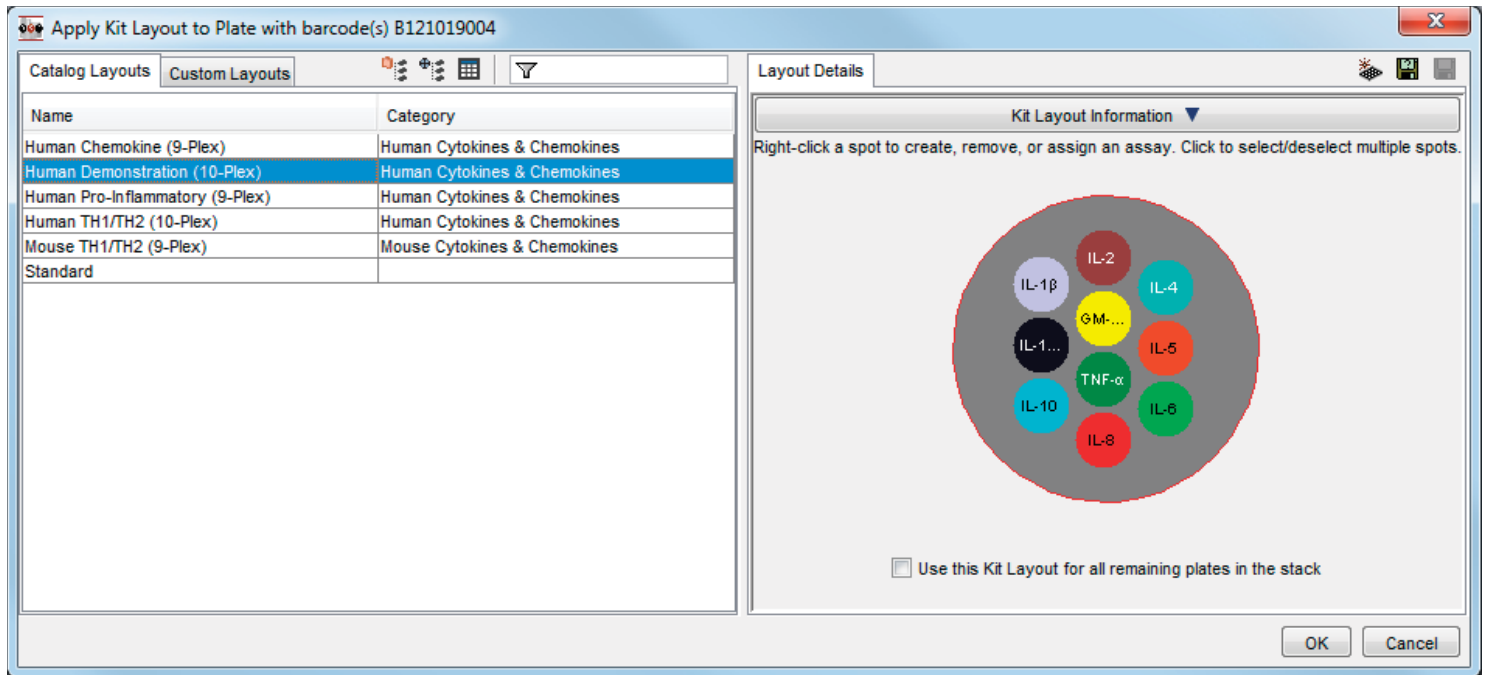
To read a whole plate (NO KIT LAYOUT)

- 1) Launch DISCOVERY WORKBENCH
- 2) Connect to the imager
- 3) Check instrument status
- 4) Select Read from Bar Code
- 5) If reading 1 plate:
 - a. Click Return Plate to Input Stack
 - b. Click Read 1 Plate
- 6) If reading multiple plates:
 - a. Do NOT select Return Plate to Input Stack
 - b. Optional: select # of plates being read
- 7) Do NOT select Apply Kit Layout
- 8) Click Run
- 9) Confirm Set-up is correct (top section)
- 10) Provide a Run Name (optional)
- 11) Decide which export formats to use
- 12) Browse to Select Output Path
- 13) Click OK to begin imaging the plate

To read a partial plate (NO KIT LAYOUT)

- 1) Launch DISCOVERY WORKBENCH
- 2) Connect to the Imager
- 3) Check instrument status
- 4) Select the type of plate being imaged from the Plate Type drop-down
- 5) Click Read 1 Plate
- 6) Click Partial Plate (box appears after plate type is selected, step 4)
- 7) Select sectors to be imaged on the plate overview (white sectors are read)
- 8) Do NOT select Apply Kit Layout
- 9) Click Run
- 10) Confirm Set-up is correct (top section)
- 11) Provide a Run Name (optional)
- 12) Decide which export formats to use
- 13) Browse to Select Output Path
- 14) Click OK to begin imaging the plate

How to Read a Plate in DISCOVERY WORKBENCH® 4.0



To read a whole plate using a kit layout:

- 1) Launch DISCOVERY WORKBENCH
- 2) Connect to the imager
- 3) Check instrument status
- 4) Select Read from Bar Code
- 5) If reading 1 plate:
 - a. Click Return Plate to Input Stack
 - b. Click Read 1 Plate
- 6) If reading multiple plates:
 - a. Do NOT select Return Plate to Input Stack
 - b. Optional: select # of plates being read
- 7) Select Apply Kit Layout
- 8) Click Run
- 9) Confirm Set-up is correct (top section)
- 10) Provide a Run Name (optional)
- 11) Decide which export formats to use
- 12) Browse to Select Output Path
- 13) Click OK to begin Imaging the plate
- 14) The Apply Kit Layout to Plate window will open, populated with Kit Layouts that match the type of plate being read. Select the desired Kit Layout from the list on the left
- 15) Select or deselect Use This Kit Layout for all remaining plates in the stack, as desired
- 16) Click OK
- 17) The Kit Layout will be applied to the data, and the raw data displayed

©2013 Meso Scale Diagnostics, LLC. All Rights Reserved. MESO SCALE DISCOVERY, MESO SCALE DIAGNOSTICS, WWW.MESOSCALE.COM, MSD, MSD (DESIGN), DISCOVERY WORKBENCH, QUICKPLEX, MULTI-ARRAY, MULTI-SPOT, SULFO-TAG, SECTOR, SECTOR HTS, SECTOR PR, SMALL SPOT (DESIGN), 96 WELL 1, 4, 7, & 10-SPOT (DESIGNS), 384 WELL 1 & 4-SPOT (DESIGNS) and SPOT THE DIFFERENCE are trademarks and/or service marks of Meso Scale Diagnostics, LLC.

