

Entering Sample IDs in DISCOVERY WORKBENCH® 4.0

To Import a Text File of Sample IDs:

- 1) Launch DISCOVERY WORKBENCH software.
- 2) Create a new plate layout (Figure 1). Any plate/spot format is acceptable.
- 3) Set-up the plate layout as desired, with assays, standards, unknowns, controls, replicates, etc.
- 4) Open Excel (or any similar spreadsheet program), and input desired sample IDs in a 96-well grid (8x12 format), including replicates where applicable (Figure 2).
- 5) Save the file either as a tab delimited text file or a comma separated values (.csv) file.
- 6) Return to the plate layout within DISCOVERY WORKBENCH, and go to Edit → Import Sample Names from File. Browse to the saved tab delimited text file or csv file (be certain the correct option is selected within the browse window) and open the file.
- 7) The sample names within the text file will be applied to the wells within the plate layout.
- 8) If the plate layout is finished, save and close the plate layout.

NOTE: In step 2, instead of creating a new plate layout, you can also open an existing plate layout or open an experiment and open the plate layout within the experiment. The choice depends upon the specific experiment needs.

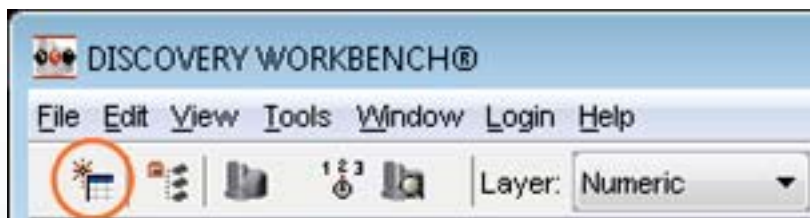


Figure 1: DISCOVERY WORKBENCH Toolbar: New Plate Layout icon

	A	B	C	D	E	F	G	H	I	J	K	L	M
1	Std1	Std1	Std1	Std1	Ctrl1	Ctrl1	Ctrl1	Ctrl1	60035	60035	60035	60035	
2	Std2	Std2	Std2	Std2	Ctrl2	Ctrl2	Ctrl2	Ctrl2	99501	99501	99501	99501	
3	Std3	Std3	Std3	Std3	Ctrl3	Ctrl3	Ctrl3	Ctrl3	53562	53562	53562	53562	
4	Std4	Std4	Std4	Std4	Blnk	Blnk	Blnk	Blnk	90001	90001	90001	90001	
5	Std5	Std5	Std5	Std5	27502	27502	27502	27502	78201	78201	78201	78201	
6	Std6	Std6	Std6	Std6	20877	20877	20877	20877	80012	80012	80012	80012	
7	Std7	Std7	Std7	Std7	Blnk	Blnk	Blnk	Blnk	32801	32801	32801	32801	
8	Std8	Std8	Std8	Std8	Blnk	Blnk	Blnk	Blnk	14850	14850	14850	14850	
9													

Figure 2: Copying sample names from an Excel spreadsheet emulating a 96-well grid

Entering Sample IDs in DISCOVERY WORKBENCH® 4.0

To Copy and Paste Sample IDs:

- 1) Launch DISCOVERY WORKBENCH software.
- 2) Create a new plate layout (Figure 1). Any plate/spot format is acceptable.
- 3) Set-up the plate layout as desired, with assays, standards, unknowns, controls, replicates, etc.
- 4) Open Excel (or any similar spreadsheet program) and input desired sample IDs in the orientation they will be copied into the plate layout. For example, if you want to copy sample IDs into columns 3 and 4 of the plate (which are replicates), input the 8 sample IDs into a column in Excel (Figure 3).
- 5) Highlight the sample IDs in Excel and hit copy (Ctrl+C).
- 6) Return to the plate layout in DISCOVERY WORKBENCH, highlight the destination wells (highlighted wells need to be the same shape as copied cells, replicates will automatically propagate) and select Edit → Paste Sample Names from Clipboard.
- 7) Repeat process steps 4-6 until all wells have been assigned sample IDs.
- 8) If the plate layout is finished, save and close the plate layout.

To Input Sample IDs Manually:

- 1) Launch DISCOVERY WORKBENCH software.
- 2) Create a new plate layout (Figure 1). Any plate/spot format is acceptable.
- 3) Assign assays to their corresponding spots, and then highlight the first wells you wish to assign and select S, C, or U (Standard, Control, or Unknown).
- 4) Within the Assign Samples to Wells window, set the replicates and concentrations or dilutions as required. Within the Name column in the lower half of the window, double-click to select the first name to be entered, delete the information already with the cell, and type in the appropriate Sample ID (Figure 4).
- 5) Repeat this process for the remainder of the wells of that sample type, and for any other wells/sample types, which require sample IDs.
- 6) Once the plate layout is finished, save and close.

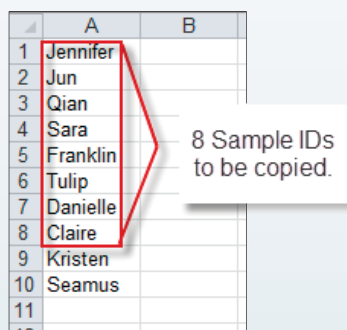


Figure 3: Copying sample names from an Excel spreadsheet

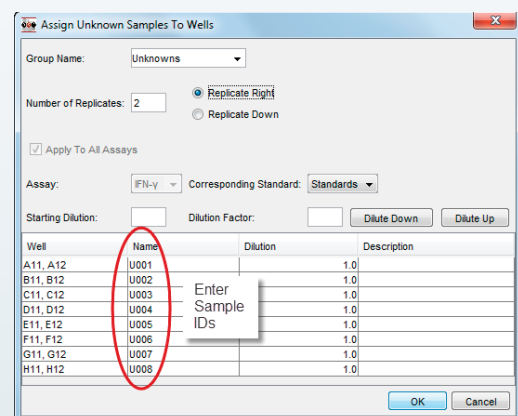


Figure 4: Manually type the Sample ID

©2013 Meso Scale Diagnostics, LLC. All Rights Reserved. MESO SCALE DISCOVERY, MESO SCALE DIAGNOSTICS, WWW.MESOSCALE.COM, MSD, MSD (DESIGN), DISCOVERY WORKBENCH, QUICKPLEX, MULTI-ARRAY, MULTI-SPOT, SULFO-TAG, SECTOR, SECTOR HTS, SECTOR PR, SMALL SPOT (DESIGN), 96 WELL 1, 4, 7, & 10-SPOT (DESIGNS), 384 WELL 1 & 4-SPOT (DESIGNS) and SPOT THE DIFFERENCE are trademarks and/or service marks of Meso Scale Diagnostics, LLC.

