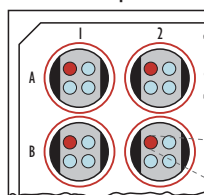
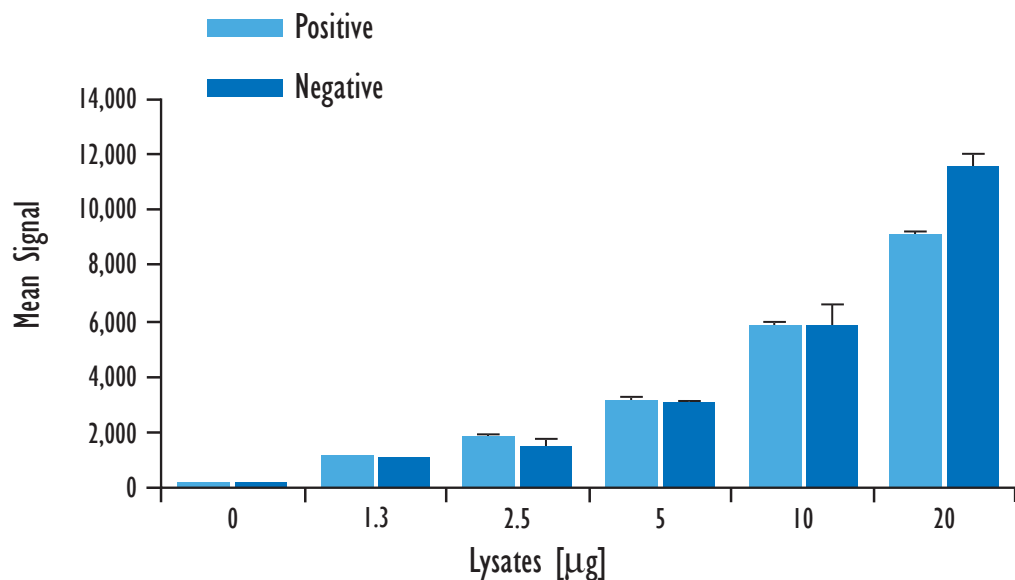
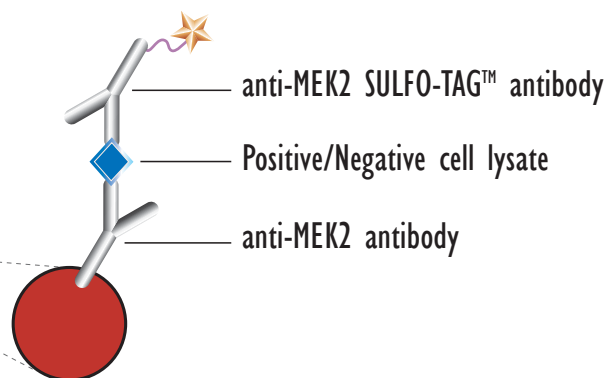


Detection of Total MEK2

MSD MULTI-SPOT®
96-Well 4-Spot Plate

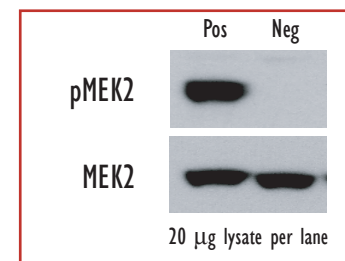


BSA

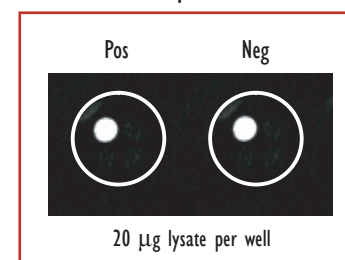


Lysates (µg)	pMEK2 Positive			pMEK2 Negative			P/N
	Average	StdDev	%CV	Average	StdDev	%CV	
0	141	6	4	143	13	9	
1.3	1,130	18	2	1,014	36	4	1.1
2.5	1,850	23	1	1,446	282	20	1.3
5	3,105	146	5	3,033	109	4	1.0
10	5,803	184	3	5,804	820	14	1.0
20	9,102	111	1	11,540	463	4	0.8

Traditional Western



MSD Experimental



Logarithmically growing Jurkat cells (negative) were treated with LY294002 (50 µM; 2.25 hr)(negative) or PMA (200 nM; 15 min)(positive). Whole cell lysates were added to MSD MULTI-SPOT 4-Spot plates coated with anti-total-MEK2 antibody on one of the four spatially distinct electrodes per well. Total MEK2 was detected with an anti-total-MEK2 antibody labeled with MSD SULFO-TAG reagent.



Meso Scale Discovery

A division of Meso Scale Diagnostics, LLC.
www.mesoscale.com