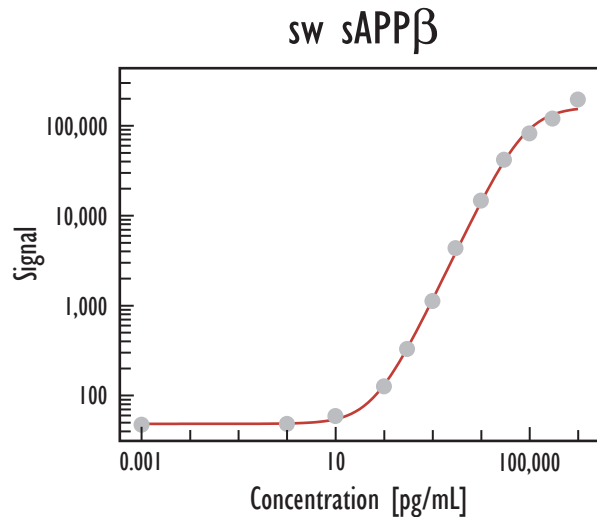
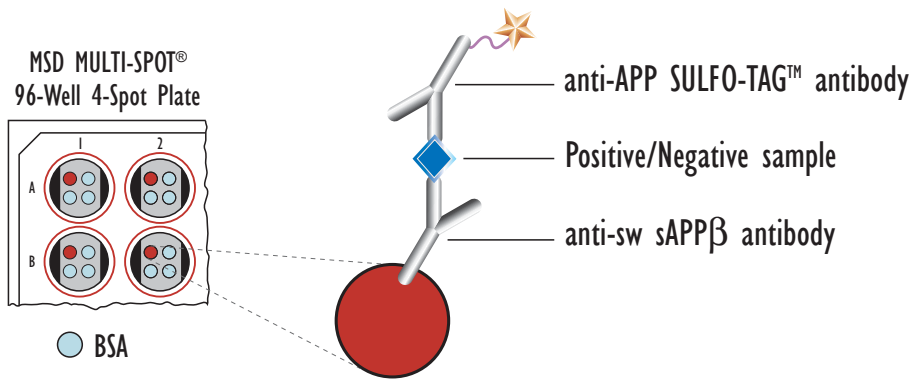
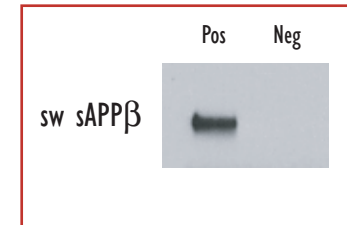


# Detection of Human Swedish Soluble APP $\beta$ (sw sAPP $\beta$ )

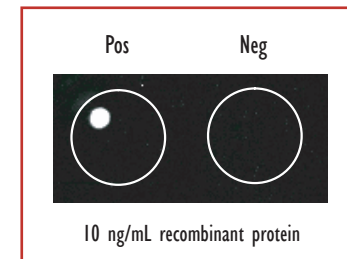


Concentration	Average	StdDev	%CV	P/N
0	47	9	19	
1 pg/mL	48	11	24	1
10 pg/mL	59	22	37	1
100 pg/mL	126	18	14	3
300 pg/mL	329	15	4	7
1 ng/mL	1,120	37	3	24
3 ng/mL	4,345	176	4	92
10 ng/mL	14,664	356	2	310
30 ng/mL	41,785	125	0	883
100 ng/mL	81,860	20,236	25	1,729
300 ng/mL	119,720	3,060	3	2,529
1 $\mu$ g/mL	194,794	19,973	10	4,115

Traditional Western



MSD Experimental



Recombinant human Swedish sAPP $\beta$  was purified from mammalian cells (>95% pure) and diluted in fresh culture medium (DMEM, 10% FBS, Pen/Strep). Samples were added to MSD MULTI-SPOT 4-Spot plates coated with anti-Swedish sAPP $\beta$  antibody on one of the four spatially distinct electrodes per well. The Swedish sAPP $\beta$  protein was detected with anti-APP antibody labeled with MSD SULFO-TAG reagent.

Cross Reactivity (at 100 ng/mL)

wt sAPP $\beta$   $\leq 0.07\%$

sAPP $\alpha$   $\leq 0.10\%$

sw sAPP $\beta$   
Detection Limit  
(3 StdDev over background) 39 pg/mL