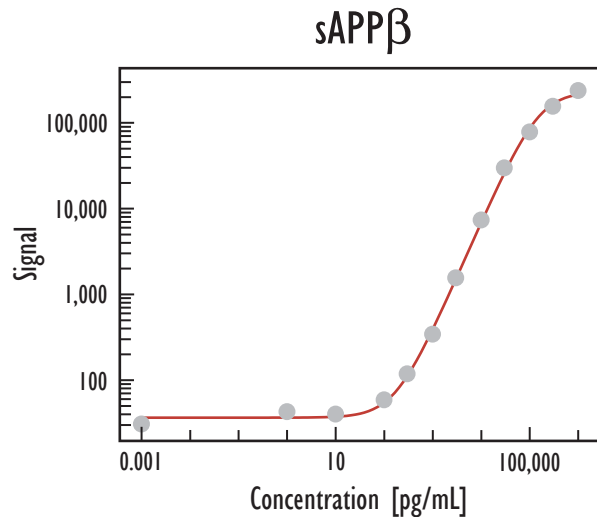
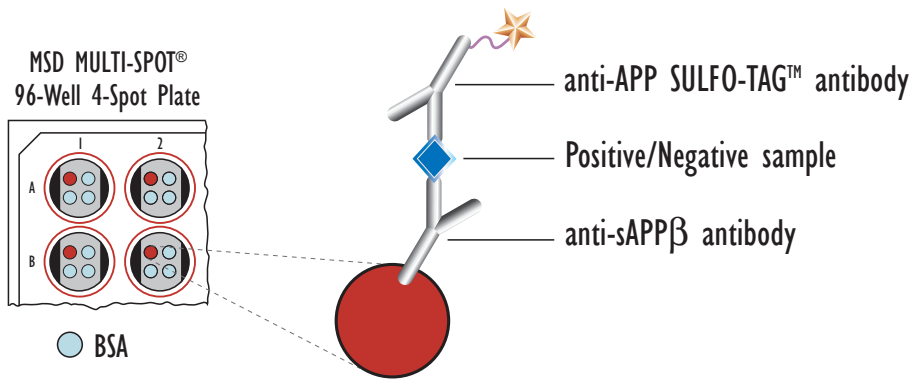
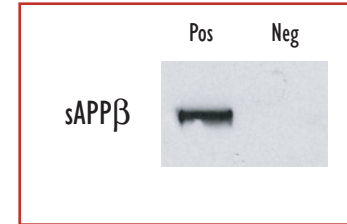


# Detection of Human Soluble APP $\beta$ (sAPP $\beta$ )

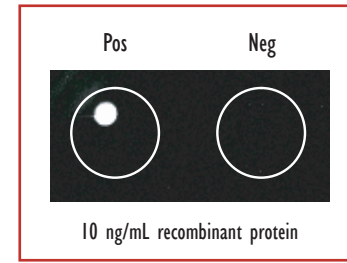


Concentration	Average	StdDev	%CV	P/N
0	31	15	49	
1 pg/mL	43	15	34	1
10 pg/mL	40	8	20	1
100 pg/mL	59	13	23	2
300 pg/mL	118	12	10	4
1 ng/mL	342	16	5	11
3 ng/mL	1,553	72	5	51
10 ng/mL	7,350	541	7	240
30 ng/mL	29,802	2,262	8	972
100 ng/mL	78,230	4,371	6	2,551
300 ng/mL	155,928	6,771	4	5,085
1 $\mu$ g/mL	237,557	7,991	3	7,746

Traditional Western



MSD Experimental



Recombinant human sAPP $\beta$  was purified from mammalian cells (>95% pure) and diluted in fresh culture medium (DMEM, 10% FBS, Pen/Strep). Samples were added to MSD MULTI-SPOT 4-Spot plates coated with anti-sAPP $\beta$  antibody on one of the four spatially distinct electrodes per well. The sAPP $\beta$  protein was detected with anti-APP antibody labeled with MSD SULFO-TAG reagent.

Cross Reactivity (at 100 ng/mL)

sw sAPP $\beta$   $\leq 0.05\%$

sAPP $\alpha$   $\leq 0.08\%$

wt sAPP $\beta$   
Detection Limit  
(3 StdDev over background) 182 pg/mL