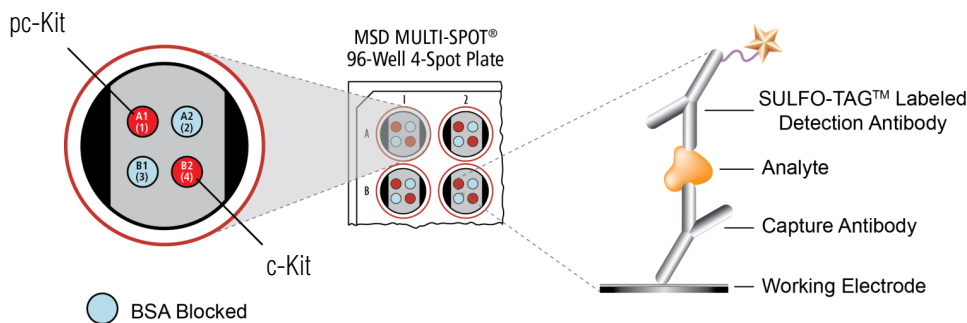


MSD[®] Phospho(Tyr721)/Total c-Kit Assay Whole Cell Lysate Kit

For quantitative determination in human whole cell lysate samples



The MSD Phospho(Tyr721)/Total c-Kit Assay is available on 96-well 4-Spot plates. This datasheet outlines the performance of the assay.

Typical Data

Representative results for the Phospho(Tyr721)/Total c-Kit are illustrated below. The signal and ratio values provided below are example data; individual results may vary depending upon the samples tested. Western blot analyses of each lysate type were performed with phospho-c-Kit and total c-Kit antibodies and are shown below for comparison. Growing M07e cells were starved in low serum for 30 minutes (negative) and treated with SCF (100 ng/mL; 2 minutes) (positive). Whole cell lysates were added to MSD MULTI-SPOT[®] 4-Spot plates coated with anti-phospho-c-Kit (Tyr721) and anti-total c-Kit antibodies on spatially distinct electrodes within a well. Phosphorylated and total c-Kit were detected with anti-total c-Kit antibody conjugated with MSD SULFO TAG[™] reagent.

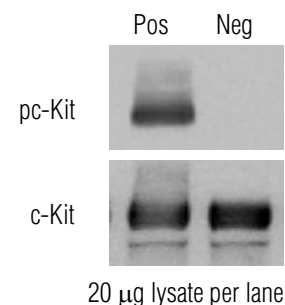
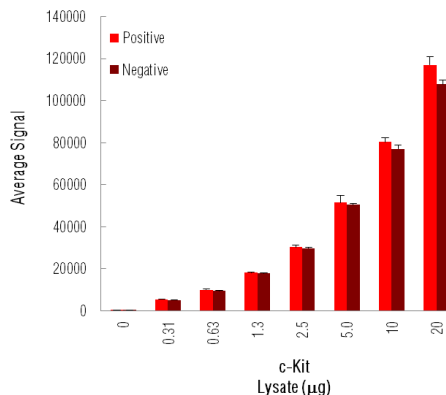
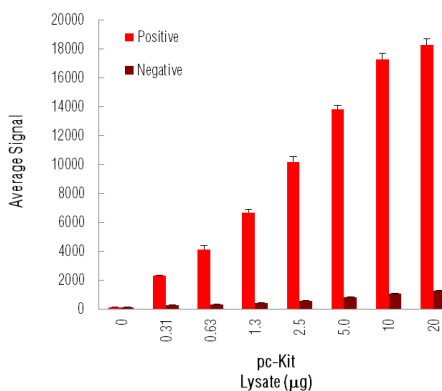


Fig. 1: Sample data generated with MULTI-SPOT Phospho(Tyr721)/Total c-Kit Assay. Increased signal for phosphorylated c-Kit was observed with pc-Kit positive cell lysate. Total c-Kit signal increased throughout the titration of both pc-Kit positive and negative cell lysates. The Phospho(Tyr721)/Total c-Kit Assay provides a quantitative measure of the data obtained with the traditional Western blot.

Alzheimer's Disease
BioProcess
Cardiac
Cell Signaling
Clinical Immunology
Cytokines
Hypoxia
Immunogenicity
Inflammation
Metabolic
Oncology
Toxicology
Vascular

Catalog Numbers

Phospho (Tyr721)/Total c-Kit Whole Cell Lysate Kit	
Kit size	
1 plate	K15119D-1
5 plates	K15119D-2
20 plates	K15119D-3

Phospho-c-Kit (Tyr721) Whole Cell Lysate Set	
200 µg	C11DP-1

Ordering information

MSD Customer Service
Phone: 1-301-947-2085
Fax: 1-301-990-2776
Email: CustomerService@mesoscale.com

Company Address

MESO SCALE DISCOVERY[®]
A division of
Meso Scale Diagnostics, LLC.
9238 Gaither Road
Gaithersburg, MD 20877 USA

www.mesoscale.com[®]

For Research Use Only.
Not for use in diagnostic procedures.

MSD Phosphoprotein Assays

Lysate Titration

Data for positive and negative M07e cell lysates using the MULTI-SPOT Phospho(Tyr721)/Total c-Kit are presented below.

	Lysate (µg)	Positive			Negative			P/N
		Average Signal	StdDev	%CV	Average Signal	StdDev	%CV	
pc-Kit	0	122	6	4.9	127	5	3.9	
	0.31	2305	57	2.5	273	14	5.1	8.4
	0.63	4142	231	5.6	328	19	5.8	13
	1.3	6687	185	2.8	427	7	1.6	16
	2.5	10190	374	3.7	585	6	1.0	17
	5.0	13805	279	2.0	796	30	3.8	17
	10	17283	404	2.3	1057	30	2.8	16
	20	18255	459	2.5	1271	40	3.1	14
c-Kit	0	261	16	6.1	253	8	3.2	
	0.31	5444	181	3.3	5118	182	3.6	1.1
	0.63	9861	493	5.0	9444	126	1.3	1.0
	1.3	18141	239	1.3	17734	347	2.0	1.0
	2.5	30290	1031	3.4	29691	544	1.8	1.0
	5.0	51427	3304	6.4	50380	697	1.4	1.0
	10	80241	2254	2.8	76996	2008	2.6	1.0
	20	117036	3707	3.2	107852	2036	1.9	1.1

MSD Advantage

- **Multiplexing:** Multiple analytes can be measured in one well using typical sample amounts of 25 µg/well or less without compromising speed or performance
- **Large dynamic range:** Linear range of up to five logs enables the measurement of native levels of biomarkers in normal and diseased samples without multiple dilutions
- **Minimal background:** The stimulation mechanism (electricity) is decoupled from the signal (light)
- **Simple protocols:** Only labels near the electrode surface are detected, enabling no-wash assays
- **Flexibility:** Labels are stable, non-radioactive, and conveniently conjugated to biological molecules
- **High sensitivity and precision:** Multiple excitation cycles of each label enhance light levels and improve sensitivity

For a complete list of products, please visit our website at www.mesoscale.com

MESO SCALE DISCOVERY, MESO SCALE DIAGNOSTICS, WWW.MESOSCALE.COM, MSD, MSD (DESIGN), DISCOVERY WORKBENCH, QUICKPLEX, MULTI-ARRAY, MULTI-SPOT, SULFO-TAG, SECTOR, SECTOR HTS, SECTOR PR, 4-SPOT (DESIGN) and SPOT THE DIFFERENCE are trademarks and/or service marks of Meso Scale Diagnostics, LLC.
© 2011 Meso Scale Diagnostics, LLC. All rights reserved.

For Research Use Only. Not for use in diagnostic procedures.

