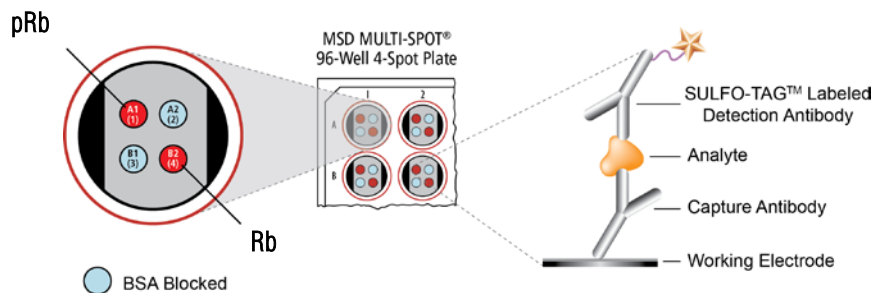


MSD® Phospho(Ser780)/Total Rb Assay Whole Cell Lysate Kit

For quantitative determination in human whole cell lysate samples



The **retinoblastoma** protein (**Rb**, pRb, and Rb1) is a 110 kDa tumor suppressor protein (and a member of the pocket protein family) that functions by inhibiting progression from G1 to S phase of the cell cycle.¹ Rb is also involved in terminal differentiation and apoptosis.² It binds and inhibits transcriptional activity of members of the E2F family of transcription factors.³ When Rb is phosphorylated by members of the Cyclin Dependent Kinase family (CDKs), it loses its affinity for the E2F transcription factors, transcriptional repression is relieved, and the cells proceed through the G1 to S phase transition and go on with the cell cycle.⁴ Activation of the Cyclin D-dependent kinases can be prevented by Inhibitor of Kinase 4 (INK4), as well as by other mechanisms. Overexpression of INK4 inhibits phosphorylation of Rb by CDKs, and thus prevents cell cycle progression.⁵ Loss of transcriptional repression by Rb is involved in many different types of cancer. Study of the retinoblastoma protein and inactivation of Rb by phosphorylation at multiple different residues has been the subject of intense study due to the fundamental role of Rb in many normal and disease based physiological processes.

The MSD Phospho(Ser780)/Total Rb Assay is available on 96-well 4-Spot plates. This datasheet outlines the performance of the assay.

Typical Data

Representative results for the Phospho(Ser780)/Total Rb Assay are illustrated below. The signal and ratio values provided below are example data; individual results may vary depending upon the samples tested. Western blot analyses of each lysate type were performed with phospho-Rb (Ser780) and total Rb antibodies and are shown below for comparison.

Growing HT29 cells were treated with tetradrine (30 μ M, 18 hours) and harvested 8 hours after a feed with complete medium (negative), or treated with nocodazole (0.2 μ g/mL, 18 hours) (positive). Whole cell lysates were added to MSD MULTI-SPOT® 4-Spot plates coated with anti-phospho-Rb and anti-total Rb antibodies on spatially distinct electrodes within a well. Phosphorylated and total Rb were detected with anti-total Rb antibody conjugated with MSD SULFO-TAG™ reagent.

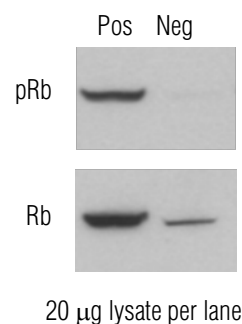
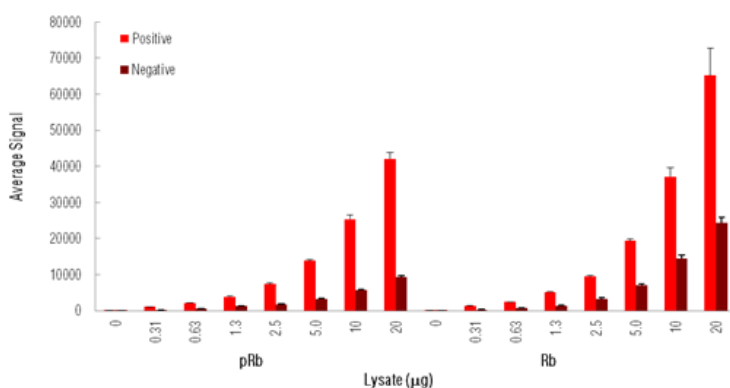


Fig. 1: Sample data generated with the MULTI-SPOT Phospho(Ser780)/Total Rb Assay. The Phospho(Ser780)/Total Rb Assay provides a quantitative measure of the data obtained with the traditional Western blot.

Alzheimer's Disease
BioProcess
Cardiac
Cell Signaling
Clinical Immunology
Cytokines
Hypoxia
Immunogenicity
Inflammation
Metabolic
Oncology
Toxicology
Vascular

Catalog Numbers

Phospho (Ser780)/Total Rb: Whole Cell Lysate Kit	
Kit size	
1 plate	K15167D-1
5 plates	K15167D-2
20 plates	K15167D-3

Ordering information

MSD Customer Service
Phone: 1-301-947-2085
Fax: 1-301-990-2776
Email: CustomerService@mesoscale.com

Company Address

MESO SCALE DISCOVERY®
A division of
Meso Scale Diagnostics, LLC.
9238 Gaither Road
Gaithersburg, MD 20877 USA

www.mesoscale.com®

For Research Use Only.
Not for use in diagnostic
procedures.

MSD Phosphoprotein Assays

Lysate Titration

Data for pRb positive and negative HT29 cell lysates using the MULTI-SPOT Phospho(Ser780)/Total Rb Assay are presented below.

	Lysate (µg)	Positive			Negative			P/N
		Average Signal	StdDev	%CV	Average Signal	StdDev	%CV	
pRb	0	65	12	17.7	51	10	19.4	
	0.31	1124	9	0.8	296	18	6.1	3.8
	0.63	2145	49	2.3	587	21	3.6	3.7
	1.3	3863	233	6.0	1355	16	1.2	2.9
	2.5	7406	339	4.6	1808	102	5.7	4.1
	5.0	13844	381	2.8	3346	109	3.3	4.1
	10	25335	1251	4.9	5828	151	2.6	4.3
	20	42051	1891	4.5	9294	399	4.3	4.5
Rb	0	26	15	56.0	15	11	68.5	
	0.31	1285	81	6.3	312	21	6.8	4.1
	0.63	2435	59	2.4	698	48	6.9	3.5
	1.3	5178	176	3.4	1431	43	3.0	3.6
	2.5	9526	211	2.2	3170	397	12.5	3.0
	5.0	19423	530	2.7	7060	364	5.2	2.8
	10	37166	2428	6.5	14457	1062	7.3	2.6
	20	65156	7631	11.7	24373	1482	6.1	2.7

MSD Advantage

- **Multiplexing:** Multiple analytes can be measured in one well using typical sample amounts of 25 µg/well or less without compromising speed or performance
- **Large dynamic range:** Linear range of up to five logs enables the measurement of native levels of biomarkers in normal and diseased samples without multiple dilutions
- **Minimal background:** The stimulation mechanism (electricity) is decoupled from the signal (light)
- **Simple protocols:** Only labels near the electrode surface are detected, enabling no-wash assays
- **Flexibility:** Labels are stable, non-radioactive, and conveniently conjugated to biological molecules
- **High sensitivity and precision:** Multiple excitation cycles of each label enhance light levels and improve sensitivity

For a complete list of products, please visit our website at www.mesoscale.com

References

1. Weinberg RA. The retinoblastoma protein and cell cycle control. *Cell*. 1995 May 5;81(3):323-30.
2. Poznic M. Retinoblastoma protein: a central processing unit. *J. Biosci*. 2009 Jun;34(2):305-12.
3. Weintraub SJ, Chow KN, Luo RX, Zhang SH, He S, Dean DC. Mechanism of active transcriptional repression by the retinoblastoma protein. *Nature*. 1995 Jun 29;375(6534):812-5.
4. Knudsen ES, Wang JY. Differential regulation of retinoblastoma protein function by specific Cdk phosphorylation sites. *J Biol Chem*. 1996 Apr 5;271(14):8313-20.
5. Hirai H, Roussel MF, Kato JY, Ashmun RA and Sherr CJ. Novel INK4 proteins. p19 and p18. are specific inhibitors of the cyclin D-dependent kinases

MESO SCALE DISCOVERY, MESO SCALE DIAGNOSTICS, WWW.MESOSCALE.COM, MSD, MSD (DESIGN), DISCOVERY WORKBENCH, QUICKPLEX, MULTI-ARRAY, MULTI-SPOT, SULFO-TAG, SECTOR, SECTOR HTS, SECTOR PR, 4-SPOT (DESIGN) and SPOT THE DIFFERENCE are trademarks and/or service marks of Meso Scale Diagnostics, LLC.
© 2011 Meso Scale Diagnostics, LLC. All rights reserved.

For Research Use Only. Not for use in diagnostic procedures.

