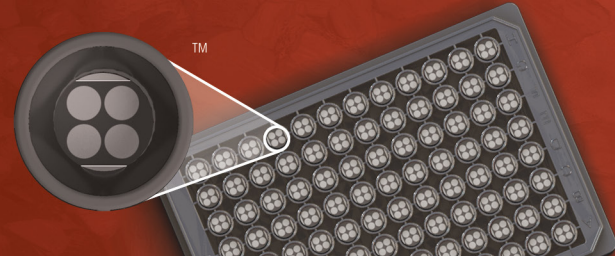


MSD[®] Phospho-HSP27 (Ser78) Assay Whole Cell Lysate Kit

For quantitative determination in human whole cell lysate samples



Alzheimer's Disease
BioProcess
Cardiac
Cell Signaling
Clinical Immunology
Cytokines
Hypoxia
Immunogenicity
Inflammation
Metabolic
Oncology
Toxicology
Vascular

Catalog Numbers

Phospho-HSP27 (Ser78)
Assay: Whole Cell Lysate Kit

Kit size

1 plate	K150FOD-1
5 plates	K150FOD-2
20 plates	K150FOD-3

Phospho-HSP27 Whole Cell
Lysate Set

200 µg	C11CS-1
--------	---------

Ordering information

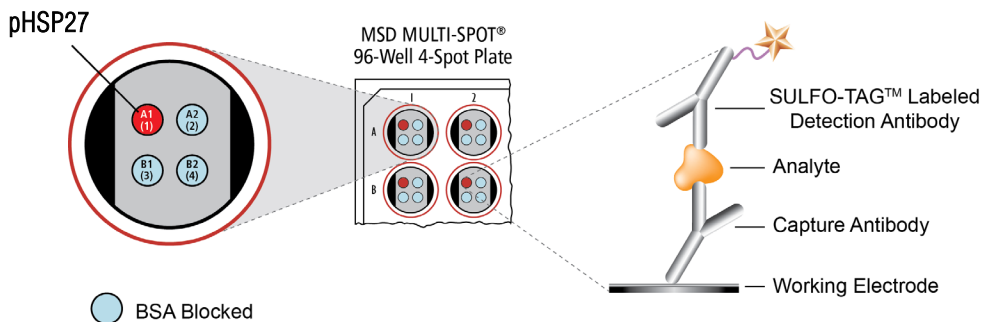
MSD Customer Service
Phone: 1-301-947-2085
Fax: 1-301-990-2776
Email: CustomerService@mesoscale.com

Company Address

MESO SCALE DISCOVERY[®]
A division of
Meso Scale Diagnostics, LLC.
9238 Gaither Road
Gaithersburg, MD 20877 USA

www.mesoscale.com[®]

For Research Use Only.
Not for use in diagnostic
procedures.



HSP27 (Heat Shock Protein 27) is one of the smaller members of the ubiquitous heat shock protein family whose expression is regulated by cellular stresses, growth factors, and inflammatory cytokines. The function of heat shock protein overexpression is to increase cellular resistance to temperature and oxidative shock, chemicals, and other environmental insults. In addition to changes in expression, HSP27 is phosphorylated on several serines (15, 78, 82) during the stress response. HSP27 is phosphorylated by MAPKAP kinase 2 during induction of the p38 MAP kinase pathway. Following phosphorylation, HSP27 undergoes oligomeric reorganization to facilitate its molecular chaperone, protein scaffolding, and cellular protective functions. HSP27 also functions to inhibit translation during heat shock by binding to initiation factor eIF4G. Due to the diversity of its protein interactions, HSP27 has been implicated in the control of cell growth, prevention of apoptosis, and smooth muscle cell migration and dysfunction.

The MSD Phospho-HSP27 (Ser78) Assay is available on 96-well 4-Spot plates. This datasheet outlines the performance of the assay.

Typical Data

Representative results for the Phospho-HSP27 (Ser78) Assay are illustrated below. The signal and ratio values provided below are example data; individual results may vary depending upon the samples tested. Western blot analyses of each lysate type were performed with phospho-HSP27 (Ser78) and total HSP27 antibodies and are shown below for comparison.

Confluent HeLa cell monolayers (negative) were treated with sorbitol (0.4 M; 30 minutes) (positive). Whole cell lysates were added to MSD MULTI-SPOT[®] 4-Spot plates coated with anti-phospho-HSP27 (Ser78) antibody on one of the four spatially distinct electrodes within a well. Phosphorylated HSP27 was detected with anti-total HSP27 antibody conjugated with MSD SULFO-TAG[™] reagent.

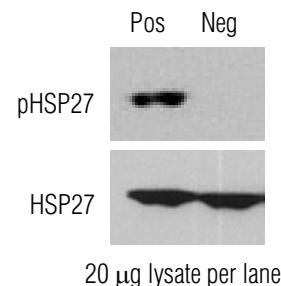
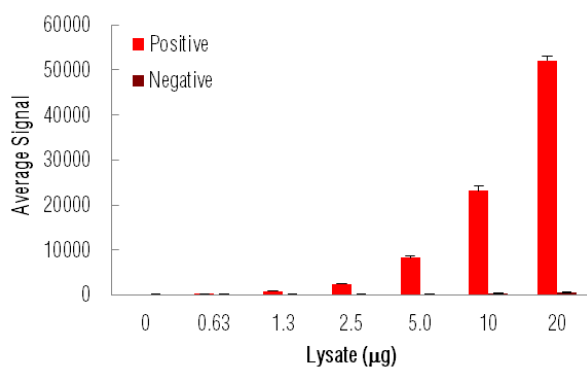


Fig. 1: Sample data generated with the MULTI-ARRAY[®] Phospho-HSP27 (Ser78) Assay. Increased signal for phosphorylated HSP27 was observed with pHSP27 positive cell lysate. The Phospho-HSP27 (Ser78) Assay provides a quantitative measure of the data obtained with the traditional Western blot.

MSD Phosphoprotein Assays

Lysate Titration

Data for pHSP27 positive and negative HeLa cell lysates using the MULTI-ARRAY Phospho-HSP27 (Ser78) Assay are presented below.

Lysate (μ g)	Positive			Negative			P/N
	Average Signal	StdDev	%CV	Average Signal	StdDev	%CV	
0	78	2	2.6	79	3	3.8	
0.63	290	31	10.7	80	14	17.5	3.6
1.3	821	7	0.9	86	8	9.3	9.5
2.5	2442	101	4.1	104	9	8.7	23
5.0	8248	508	6.2	141	6	4.3	58
10	23163	1074	4.6	244	27	11.1	95
20	52055	922	1.8	661	16	2.4	79

MSD Advantage

- **Multiplexing:** Multiple analytes can be measured in one well using typical sample amounts of 25 μ g/well or less without compromising speed or performance
- **Large dynamic range:** Linear range of up to five logs enables the measurement of native levels of biomarkers in normal and diseased samples without multiple dilutions
- **Minimal background:** The stimulation mechanism (electricity) is decoupled from the signal (light)
- **Simple protocols:** Only labels near the electrode surface are detected, enabling no-wash assays
- **Flexibility:** Labels are stable, non-radioactive, and conveniently conjugated to biological molecules
- **High sensitivity and precision:** Multiple excitation cycles of each label enhance light levels and improve sensitivity

For a complete list of products, please visit our website at www.mesoscale.com

References using MSD's technology for the measurement of phosphoproteins

1. Hua F, Henstock PV, Tang B. ERK activation by GM-CSF reduces effectiveness of p38 inhibitor on inhibiting TNFalpha release. Int Immunopharmacol. 2010 Jul;10(7):730-7. Epub 2010 Apr 14.
2. Hendriks BS, Hua F, Chabot JR. Analysis of mechanistic pathway models in drug discovery: p38 pathway. Biotechnol Prog. 2008 Jan-Feb;24(1):96-109. Epub 2007 Oct 5.
3. Gowan SM, Hardcastle A, Hallsworth AE, Valenti MR, Hunter LJ, de Haven Brandon AK, Garrett MD, Raynaud F, Workman P, Aherne W, Eccles SA. Application of meso scale technology for the measurement of phosphoproteins in human tumor xenografts. Assay Drug Dev Technol. 2007 Jun;5(3):391-401.

MESO SCALE DISCOVERY, MESO SCALE DIAGNOSTICS, WWW.MESOSCALE.COM, MSD, MSD (DESIGN), DISCOVERY WORKBENCH, QUICKPLEX, MULTI-ARRAY, MULTI-SPOT, SULFO-TAG, SECTOR, SECTOR HTS, SECTOR PR, 4-SPOT (DESIGN) and SPOT THE DIFFERENCE are trademarks and/or service marks of Meso Scale Diagnostics, LLC.
© 2011 Meso Scale Diagnostics, LLC. All rights reserved.

For Research Use Only. Not for use in diagnostic procedures.

