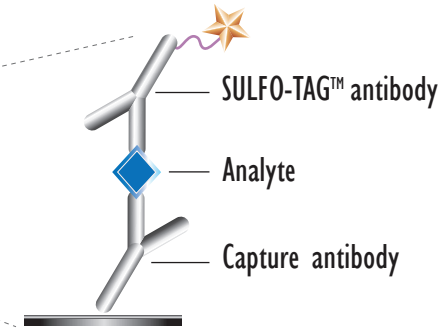
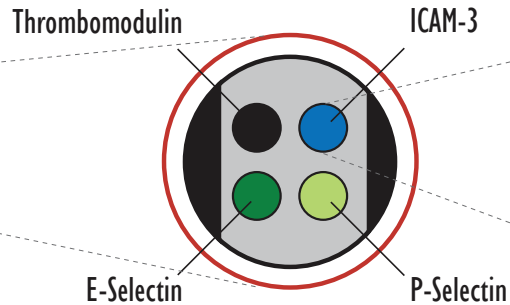
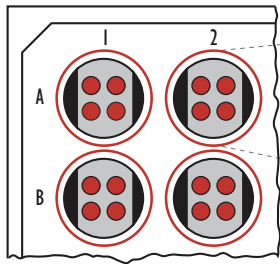


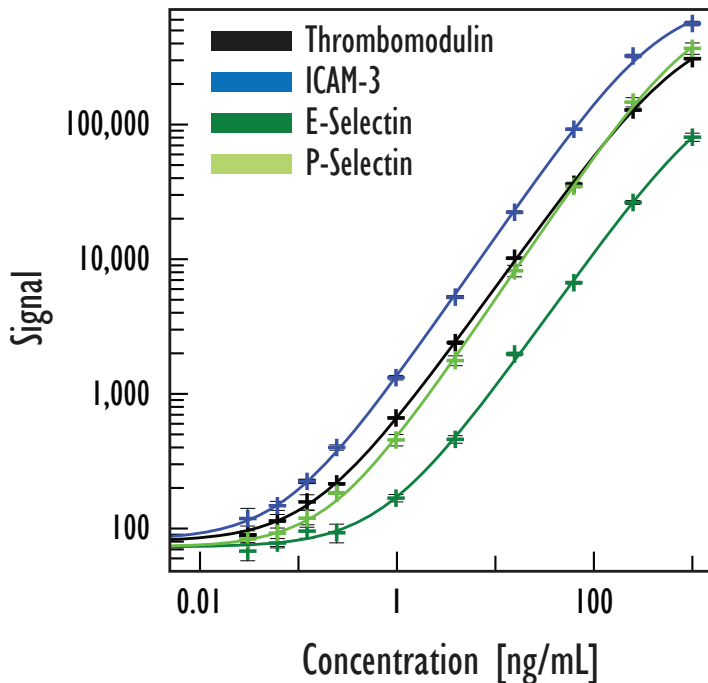
# MULTI-SPOT<sup>®</sup> Vascular Injury I Assay

Detection of Vascular Biomarkers in Human Serum Samples

MSD MULTI-SPOT<sup>®</sup>  
96-Well 4-Spot Plate



## Assay Performance



Detection Limits (ng/mL)	Thrombomodulin	ICAM-3	E-Selectin	P-Selectin
Average LLOD	0.08	0.05	0.2	0.1
Average LLOQ	0.8	0.6	0.8	1.0

LLOD is defined as 2.5x stdev above the background

LLOQ is designated by the lowest concentration on the standard curve where % CV is less than 20% and recovery of predicted concentration is within 20% of 100%

Standard curve data is from a representative experiment

Kit Size	Catalog Number
1 plate	K15135C-1
5 plates	K15135C-2
20 plates	K15135C-3
20 plates (Base)	K15135A-3

# MULTI-SPOT<sup>®</sup> Vascular Injury I Assay

## Endogenous Levels in Human Samples

- 16 normal human donors; matched sera and plasmas
- Detected level was above LLOQ for all analytes in all samples
- Average CVs for measured samples was less than 10% for all assays

	ng/mL	Thrombomodulin	ICAM-3	E-Selectin	P-Selectin
Serum	Mean	2.2	8.8	15.8	40.2
	Median	2.2	7.8	17.6	39.7
	Range	1.3 - 3.0	4.3 - 17.8	6.5 - 23.4	21.7 - 58.3
EDTA Plasma	Mean	1.4	6.6	8.3	50.2
	Median	1.3	5.6	9.1	44.2
	Range	0.9 - 2.1	2.8 - 14.8	2.9 - 13.1	28.5 - 102.8
Heparin Plasma	Mean	1.9	6.4	11.9	62.3
	Median	1.9	6.0	12.1	55.7
	Range	1.2 - 3.6	2.9 - 9.4	3.4 - 20.3	31.1 - 124.0

## Dilution Linearity

- Measured endogenous analyte levels in samples diluted into assay diluent

$$\% \text{ recovery} = \frac{(\text{measured value} * \text{dilution factor} * 100)}{\text{predicted value}}$$

	dilution factor	Thrombomodulin	ICAM-3	E-Selectin	P-Selectin
Serum	1/2	107	98	114	95
	1/4	99	85	95	89
	1/8	110	101	106	111
EDTA Plasma	1/2	120	116	143	115
	1/4	111	95	118	110
	1/8	114	96	107	116
Heparin Plasma	1/2	114	108	127	113
	1/4	108	95	123	108
	1/8	105	105	101	115

Values presented are averages across two pooled samples

## Spike Recovery

- Measured analyte spiked into undiluted human samples

$$\% \text{ recovery} = \frac{(\text{measured value} * 100)}{\text{predicted value}}$$

	Thrombomodulin	ICAM-3	E-Selectin	P-Selectin
Serum	87	77	97	89
EDTA Plasma	69	71	69	85
Heparin Plasma	83	76	91	91

Values presented are averages across two pooled samples and including spike levels of 12.5, 25, and 50 ng/mL