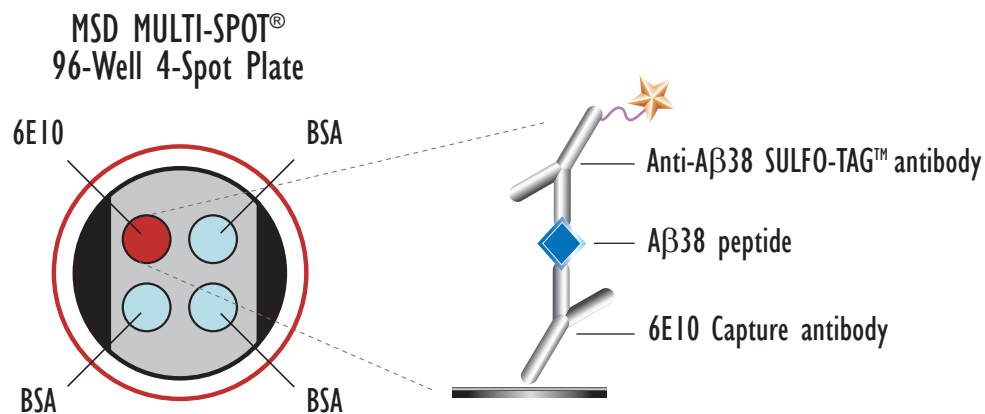
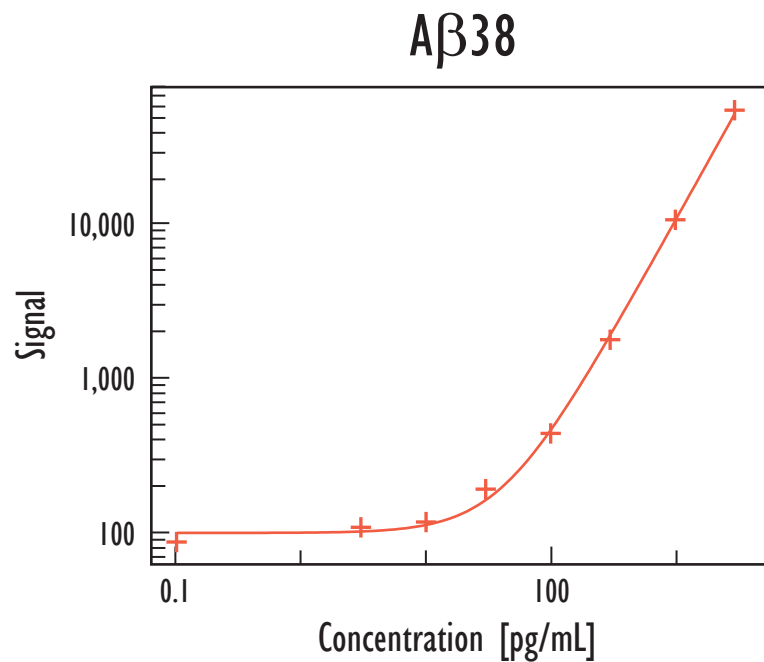


MULTI-ARRAY[®] Human A β 38 Ultra-Sensitive Assay

Detection of Human Beta Amyloid 38 in Cerebral Spinal Fluid Samples



Synthetic A β 38 peptides were diluted in 10% BSA/TBST and added to MSD MULTI-SPOT, 96-well 4 Spot plates coated with 6E10 antibody. A β 38 peptides were detected with anti-A β 38 labeled with MSD SULFO-TAG reagent. A representative titration curve is shown.

Peptide (pg/mL)	A β 38		
	Average	StdDev	%CV
0	88	11	13
4.1	108	2	2
12.3	116	30	26
37	191	29	15
111	442	4	1
333	1,790	230	13
1,000	10,729	289	3
3,000	54,270	2,460	5

Kit Size	Catalog Number
1 plate	K151FSE-1
5 plates	K151FSE-2
20 plates	K151FSE-3
20 plates (Base)	K151FSA-3

A β 38 Lower Limit of Detection 11 pg/mL

LLOD (Lower Limit of Detection) is defined as 2.5x stdev above the background.

MULTI-ARRAY[®] Human A β 38 Ultra-Sensitive Assay

Detection of Human Beta Amyloid 38 in Cerebral Spinal Fluid Samples

Spike Recovery

- Measured analyte from spike recovery in 3 pooled human CSF

$$\% \text{ recovery} = \frac{(\text{measured value} * 100)}{\text{expected value}}$$

Spike (pg/mL)	CSF Pool 1	CSF Pool 2	CSF Pool 3
500	96	103	100
250	96	102	98
125	90	104	101

Dilution Linearity

- Measured analyte levels in 3 pooled human CSF samples followed by subsequent dilution

$$\% \text{ recovery} = \frac{(\text{measured value} * \text{dilution factor} * 100)}{\text{predicted value}}$$

Dilution Factor	CSF Pool 1	CSF Pool 2	CSF Pool 3
1/2	100	102	102
1/4	75	97	82