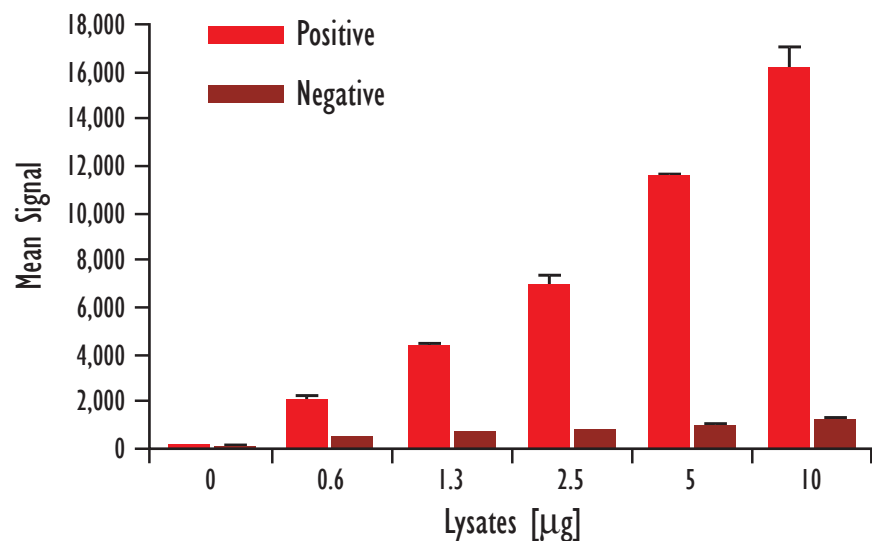
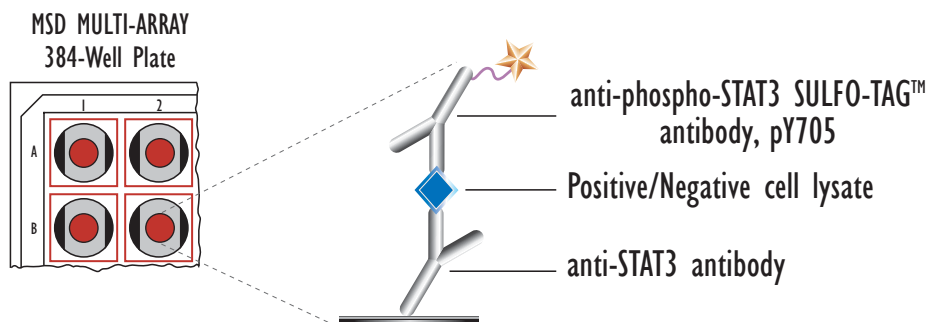


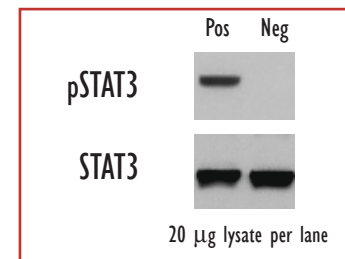
MULTI-ARRAY[®] 384-Well Phospho-STAT3 Assay (Tyr 705)

Detection of Phosphorylated STAT3 in Whole Cell Lysate Samples

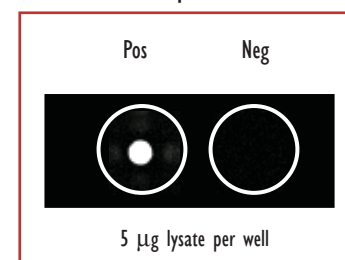


Lysates (µg)	pSTAT3 Positive			pSTAT3 Negative			P/N
	Average	StdDev	%CV	Average	StdDev	%CV	
0	133	10	8	119	8	6	
0.6	2,133	164	8	491	40	8	4.3
1.3	4,395	45	1	739	63	9	5.9
2.5	6,920	460	7	834	44	5	8.3
5	11,580	124	1	1,052	16	2	11.0
10	16,103	982	6	1,271	74	6	12.7

Traditional Western



MSD Experimental



Confluent HeLa cells (negative) were pretreated with sodium vanadate (1mM, 4h) and stimulated with Oncostatin M (40ng/mL, 5min)(positive). Whole cell lysates were added to MSD MULTI-ARRAY 384-well plates coated with an anti-total-STAT3 antibody. Phosphorylated STAT3 was detected with anti-phospho-STAT3 antibody labeled with MSD SULFO-TAG reagent.

Kit Size	SI2400	SI6000
5 plates	K250DID-2	K210DID-2
50 plates	K250DID-6	K210DID-6