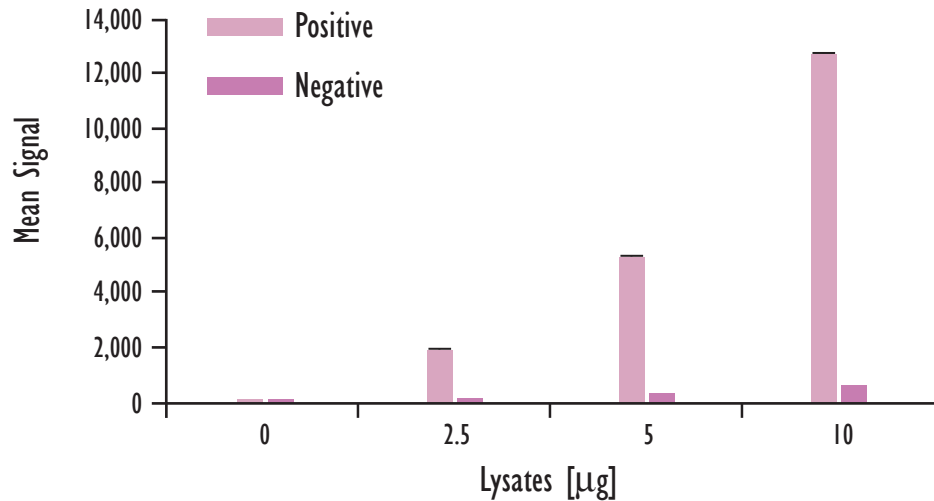
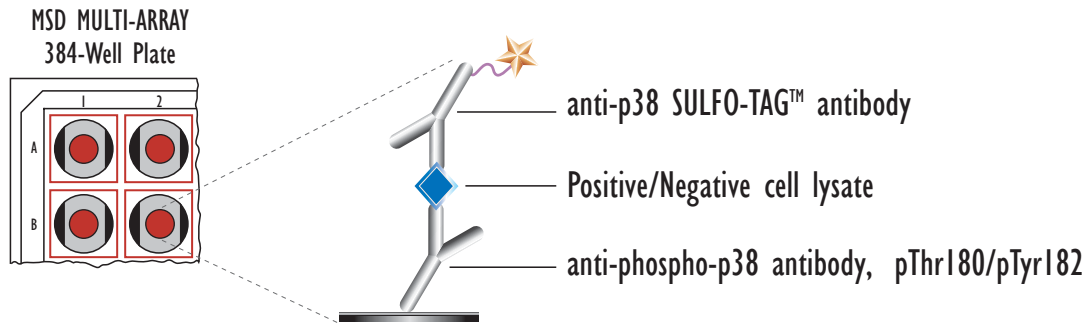


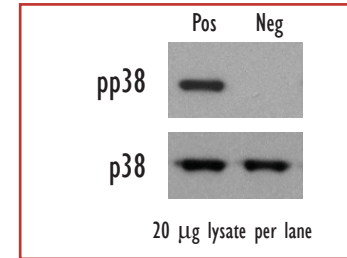
MULTI-ARRAY[®] 384-Well Phospho-p38 Assay (Thr 180/Tyr 182)

Detection of Phosphorylated p38 in Whole Cell Lysate Samples

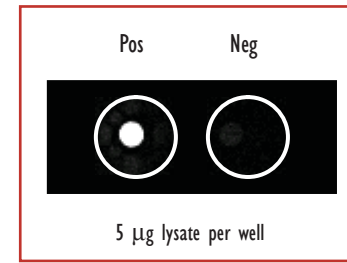


Lysates (µg)	pp38 Positive			pp38 Negative			P/N
	Average	StdDev	%CV	Average	StdDev	%CV	
0	60	14	23	65	13	20	
2.5	1,912	39	2	146	18	13	13.1
5	5,265	66	1	276	10	4	19.1
10	12,668	100	1	551	10	2	23.0

Traditional Western



MSD Experimental



Growing HEK293 cells were treated with rapamycin (1 mM; 3 hr) (negative) or Calyculin A (50 nM; 30 min)(positive). Whole cell lysates were added to MSD MULTI-ARRAY 384 well plates coated with anti-phospho-p38 antibody. Phosphorylated p38 was detected with anti-total-p38 antibody labeled with MSD SULFO-TAG reagent.

Kit Size	SI2400	SI6000
5 plates	K250CYD-2	K210CYD-2
50 plates	K250CYD-6	K210CYD-6