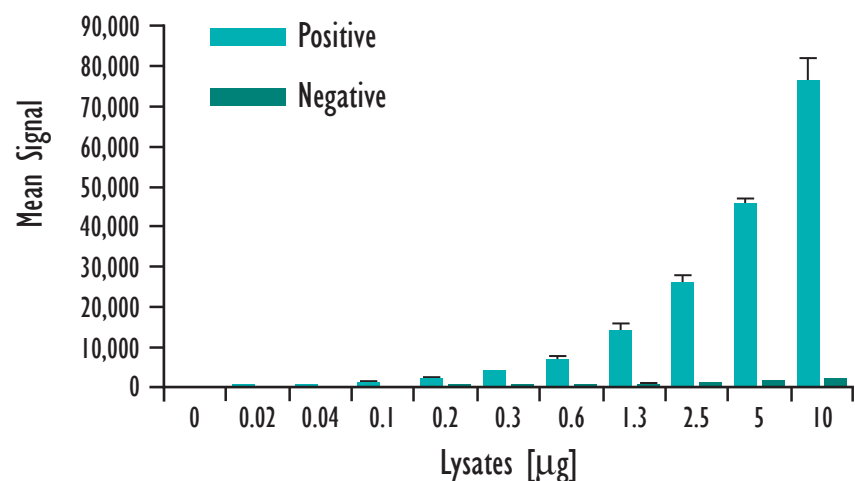
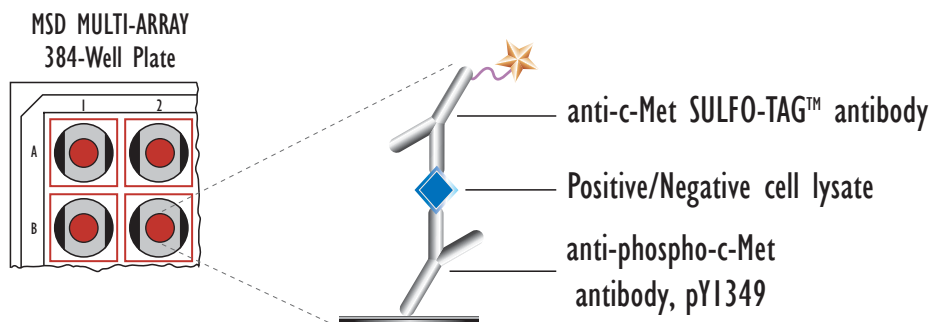


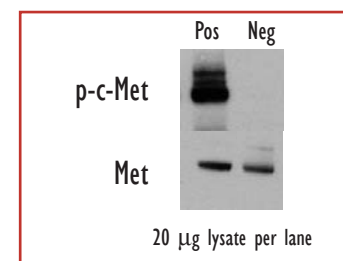
MULTI-ARRAY[®] 384-Well Phospho-Met Assay (Tyr 1349)

Detection of Phosphorylated c-Met in Whole Cell Lysate Samples

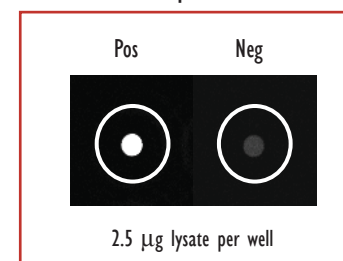


Lysates (µg)	pc-Met Positive			pc-Met Negative			P/N
	Average	StdDev	%CV	Average	StdDev	%CV	
0	172	6	3	151	8	6	
0.02	410	15	4	163	10	6	2.5
0.04	651	42	6	185	8	4	3.5
0.1	1,135	106	9	209	8	4	5.4
0.2	2,015	172	9	279	18	6	7.2
0.3	3,763	208	6	340	8	2	11.1
0.6	6,818	917	13	481	31	7	14.2
1.3	13,704	2,148	16	692	31	5	19.8
2.5	26,006	1,737	7	1,034	43	4	25.2
5	45,257	1,891	4	1,499	19	1	30.2
10	76,342	5,632	7	2,098	15	1	36.4

Traditional Western



MSD Experimental



Growing confluent HeLa cells (negative) were treated with Sodium Orthovanadate (1 mM) for 4.5 hr and then HGF (200 ng/mL) for 5 min (positive). Whole cell lysates were added to MSD MULTI-ARRAY 384 well plates coated with anti-phospho-Met antibody. Phosphorylated Met was detected with anti-Met antibody labeled with MSD SULFO-TAG reagent.

Kit Size	SI2400	SI6000
5 plates	K251DLD-2	K211DLD-2
50 plates	K251DLD-6	K211DLD-6