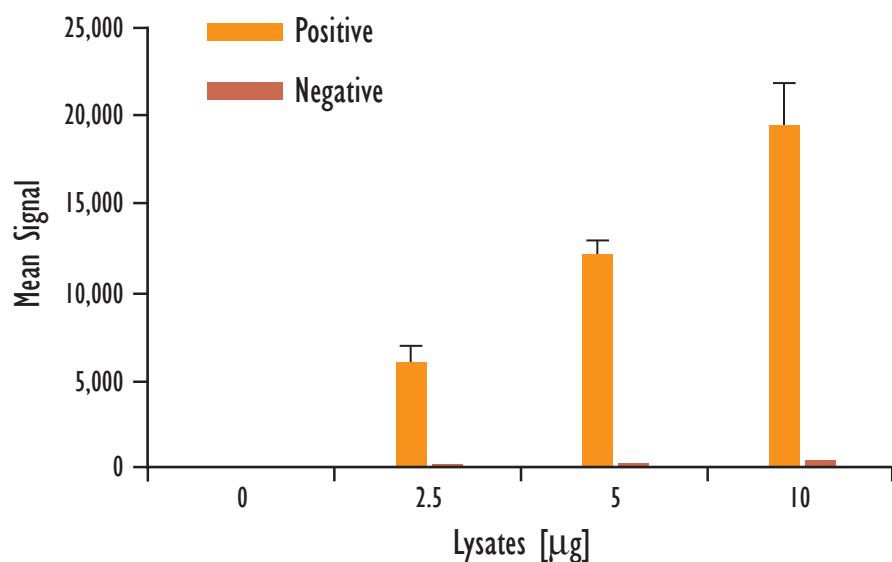
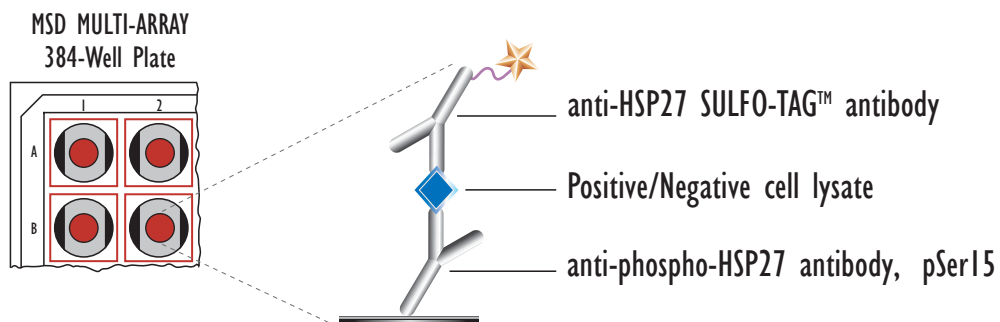


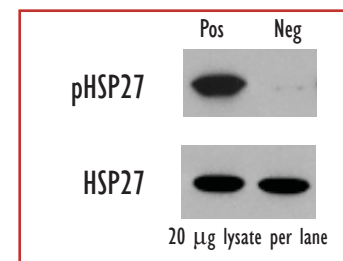
# MULTI-ARRAY<sup>®</sup> 384-Well Phospho-HSP27 Assay (Ser 15)

Detection of Phosphorylated HSP27 in Whole Cell Lysate Samples

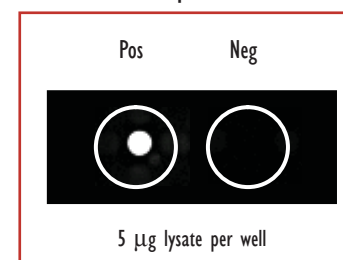


Lysates (µg)	pHSP27 Positive			pHSP27 Negative			P/N
	Average	StdDev	%CV	Average	StdDev	%CV	
0	38	11	30	31	5	15	
2.5	5,999	849	14	139	11	8	43.1
5	12,102	810	7	230	10	4	52.6
10	19,314	2,554	13	418	48	12	46.3

Traditional Western



MSD Experimental



Confluent HeLa cell monolayers (negative) were treated with sorbitol (0.4M, 30min, positive). Whole cell lysates were added to MSD MULTI-ARRAY 384 well plates coated with anti-phospho-HSP27 antibody. Phosphorylated HSP27 was detected with anti-total-HSP27 antibody labeled with MSD SULFO-TAG reagent.

Kit Size	SI2400	SI6000
5 plates	K250CSD-2	K210CSD-2
50 plates	K250CSD-6	K210CSD-6