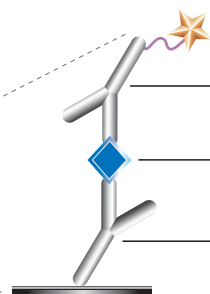
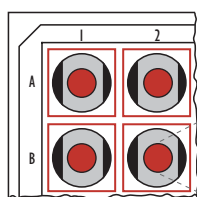


MULTI-ARRAY[®] 384-Well Cleaved, Activated Caspase-3 Assay

Detection of Activated Caspase-3 in Whole Cell Lysate Samples

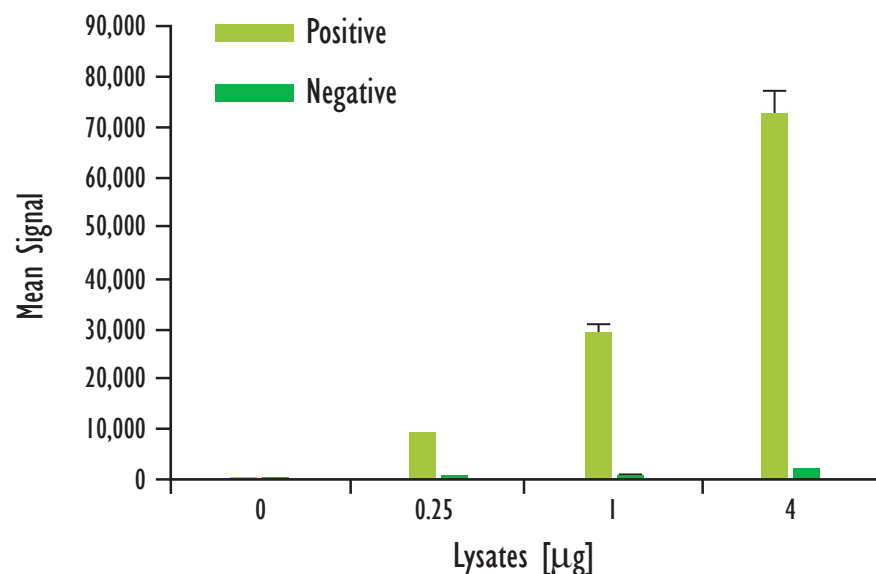
MSD MULTI-ARRAY
384-Well Plate



anti-Caspase-3 SULFO-TAG[™] antibody

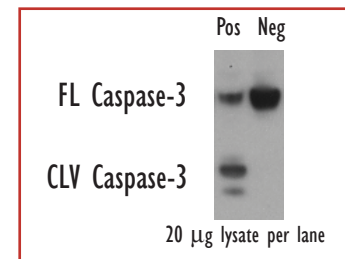
Positive/Negative cell lysate

anti-cleaved Caspase-3 (Asp 175) antibody

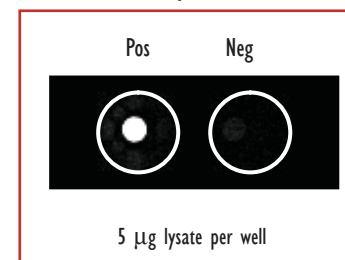


Lysates (µg)	Cleaved Caspase-3 Positive			Cleaved Caspase-3 Negative			P/N
	Average	StdDev	%CV	Average	StdDev	%CV	
0	54	8	14.9	40	5	11.6	
0.25	8,989	417	4.6	264	42	15.8	34.1
1	28,930	1,674	5.8	653	37	5.7	44.3
4	72,361	4,950	6.8	1,625	81	5.0	44.5

Traditional Western



MSD Experimental



Logarithmically growing Jurkat cells (negative) were treated with staurosporine (1 µM; 4 hr)(positive). Whole cell lysates were added to MSD MULTI-ARRAY 384 well plates coated with anti-cleaved Caspase-3 antibody. Cleaved, active Caspase-3 was detected with an anti-Caspase-3 antibody labeled with MSD SULFO-TAG reagent.

Kit Size	SI2400	SI6000
5 plates	K251CFD-2	K211CFD-2
50 plates	K251CFD-6	K211CFD-6