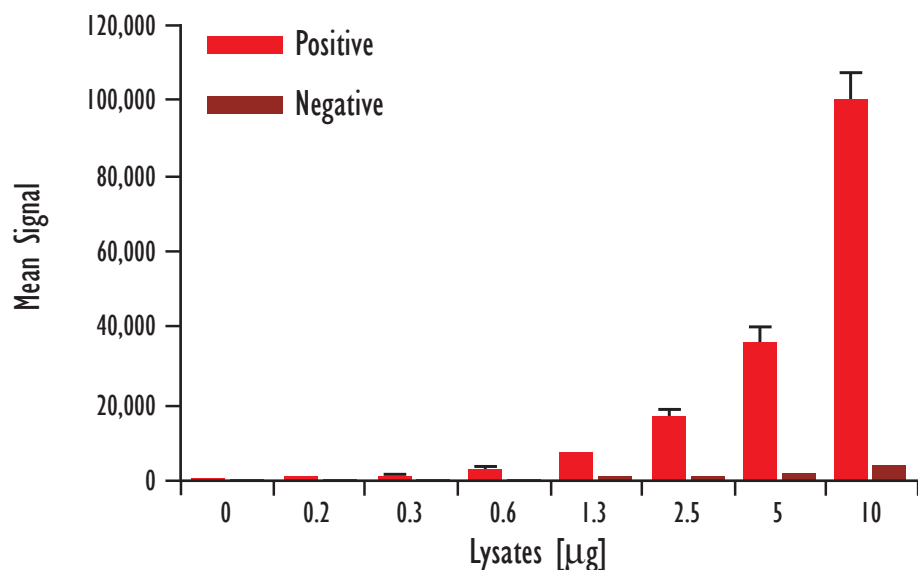
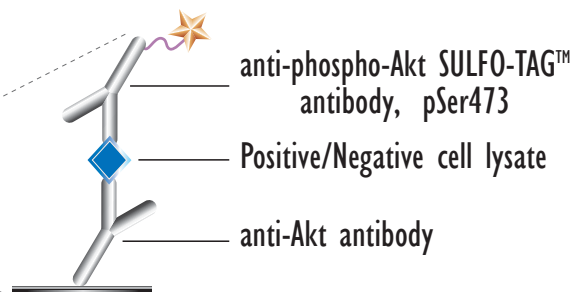
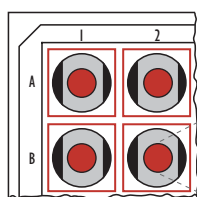


# MULTI-ARRAY<sup>®</sup> 384-Well Phospho-Akt (Ser 473) Assay

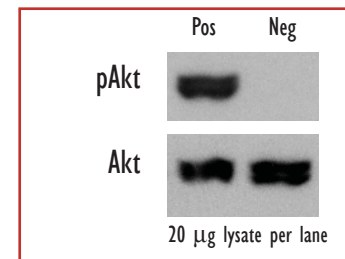
Detection of Phosphorylated Akt in Whole Cell Lysate Samples

MSD MULTI-ARRAY  
384-Well Plate

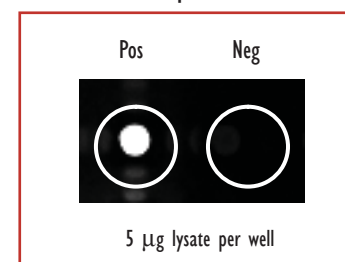


Lysates (µg)	pAkt Positive			pAkt Negative			P/N
	Average	StdDev	%CV	Average	StdDev	%CV	
0	65	10	15	103	8	7	
0.2	715	40	6	157	10	6	4.5
0.3	1,019	144	14	194	5	3	5.3
0.6	2,773	301	11	252	6	2	11.0
1.3	6,737	393	6	373	26	7	18.1
2.5	16,062	2,321	14	630	24	4	25.5
5	36,412	3,791	10	1,204	35	3	30.2
10	100,129	6,939	7	3,347	170	5	29.9

Traditional Western



MSD Experimental



Logarithmically growing Jurkat cells (positive) were treated with LY294002 (50 µM; 2.25 hr) (negative). Whole cell lysates were added to MSD MULTI-ARRAY 384-well plates coated with an anti-total-Akt antibody. Phosphorylated Akt was detected with anti-phospho-Akt antibody labeled with MSD SULFO-TAG reagent.

Kit Size	SI2400	SI6000
5 plates	K251CAD-2	K211CAD-2
50 plates	K251CAD-6	K211CAD-6