



## CERTIFICATE OF ANALYSIS

Page 1 of 8

**Product Description:** SULFO-TAG™ Goat-Anti Human IgG

**Catalog #/ Size:** S01AC-1

**Lot Number:** W0017254

**Storage Condition:** 2-8 °C

**Date of Manufacture:** 27 JUN 2017

**Expiration Date:** 30 JUN 2019

**Statement:** This product was manufactured and tested according to approved MSD documents.

### Summary of Conjugation:

Raw Material Lot #	Final Conc. (µg/mL)	L/P	% Yield	Final Buffer	Final Volume (µL)
J2815-MK47	1000	4.1	102.9	PBS + 0.05% Azide	10290

### Summary of Characterization of Material:

Characterization Method		Metric	Measured
Capillary Electrophoresis	Non-reducing	Ab % Total Mass	<u>98%</u>
	Reducing	% Total Mass H + L	<u>89%</u>
Dynamic Light Scattering		Ab % Pd	<u>15%</u>
		Ab % Intensity	<u>84%</u>
		Ab % Mass	<u>99%</u>
		Radius of Ab peak	<u>4.5%</u>
Capillary Isoelectric Focusing (pre-conjugation)		pI of main peak	<u>7.0%</u>
		pI range	<u>6.3-7.5</u>
Capillary Isoelectric Focusing (post-conjugation)		pI of main peak	<u>5.8</u>
		pI range	<u>5.1-7.2</u>

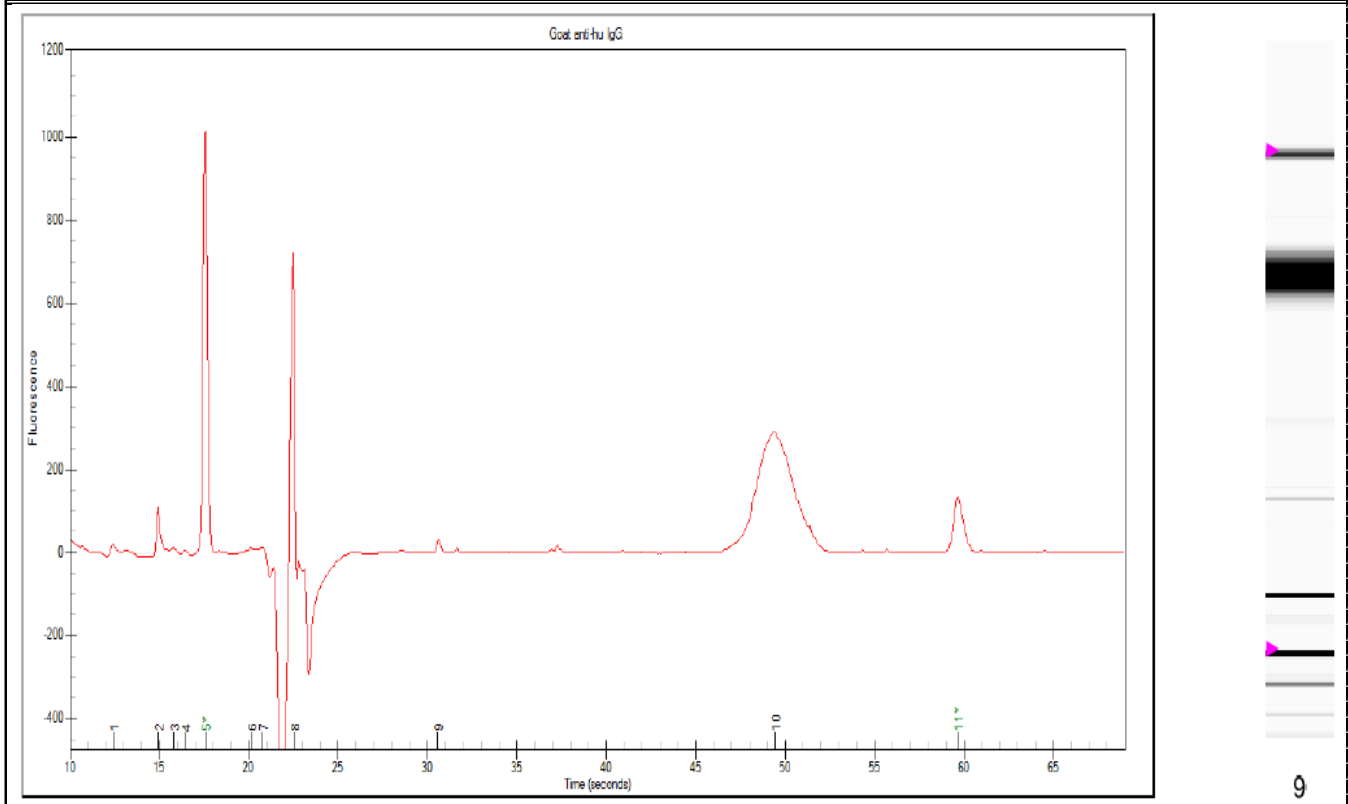


**CERTIFICATE OF ANALYSIS**

Page 2 of 8

**Non-Reducing Capillary Electrophoresis (Pre-conjugation):**

**Non-Reducing Graph and Gel**



Goat anti-hu IgG - W0017254 preSTAG_NR									
Peak Number	Mig. Time (secs)	Mol. Wt. (kDa)	Corrected Area	Area Ratio (to Upper Marker)	Concentration (ng/μl)	Calib. Conc. (ng/μl)	% Total	Observation	Peak Used for Result?
1	12.41		71.3						No
2	14.91		278.91						No
3	15.79		52.78						No
4	16.44		22.1						No
5	17.6	1.2	1840.93					Lower Marker	No
6	20.15	4.27	25.3					System Peak	No
7	20.75	5	21.37					System Peak	No
8	22.51	7.12	758.18					System Peak	No
9	30.58	28.63	24.08	0.1642	12.32		1.64		No
10	49.4	151.11	1441.75	9.8322	737.42		98.36		Yes
11	59.65	260	146.64	1	75			Upper Marker	No

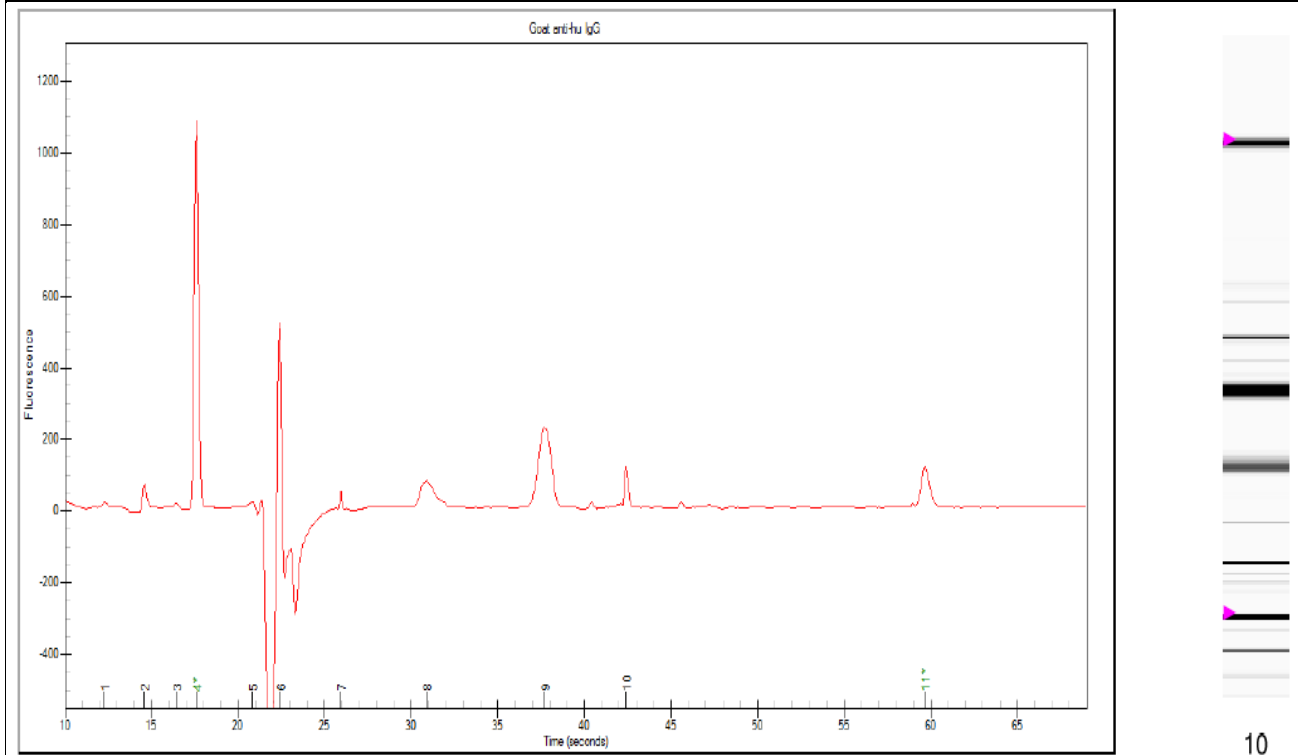


**CERTIFICATE OF ANALYSIS**

Page 3 of 8

**Reducing Capillary Electrophoresis (Pre-conjugation):**

Reducing Graph and Gel



10

**Goat anti-hu IgG - W0017254 preSTAG\_R**

Peak Number	Mig. Time (secs)	Mol. Wt. (kDa)	Corrected Area	Area Ratio (to Upper Marker)	Concentration (ng/μl)	Calib. Conc. (ng/μl)	% Total	Observation	Peak Used for Result?
1	12.26		56.78						No
2	14.58		122.39						No
3	16.44		19.98						No
4	17.6	1.2	1898.06					Lower Marker	No
5	20.81	5.06	32.91					System Peak	No
6	22.43	7.03	511.98					System Peak	No
7	25.92	12.91	28.32	0.2639	19.8		3.33		No
8	30.89	29.97	246.25	2.295	172.12		28.93		Light Chain
9	37.72	64.19	513.08	4.7816	358.62		60.27		Heavy Chain
10	42.41	95.38	63.66	0.5933	44.5		7.48		No
11	59.65	260	107.3	1	75			Upper Marker	No



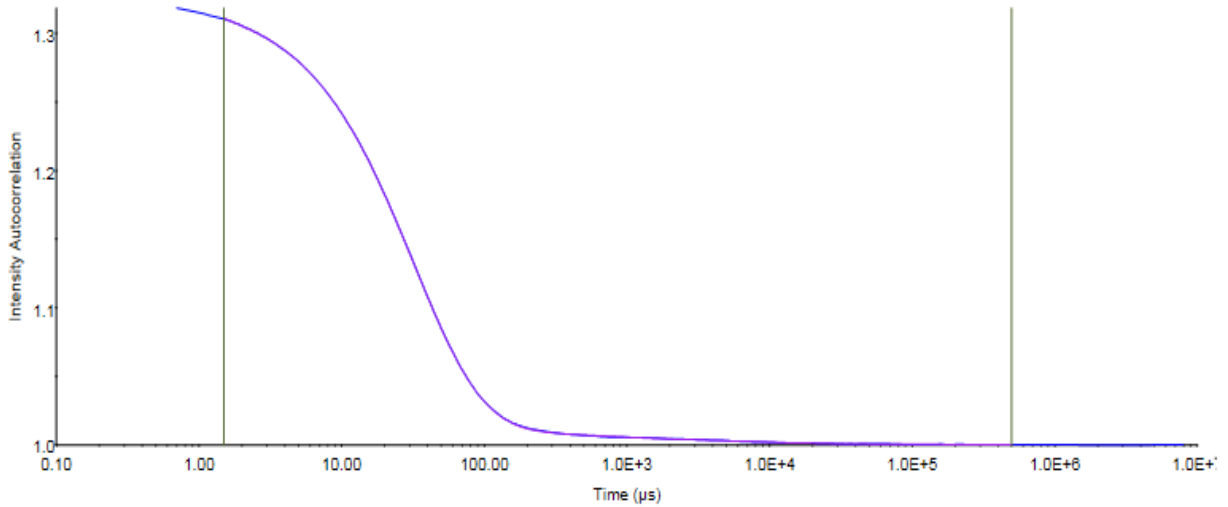


# CERTIFICATE OF ANALYSIS

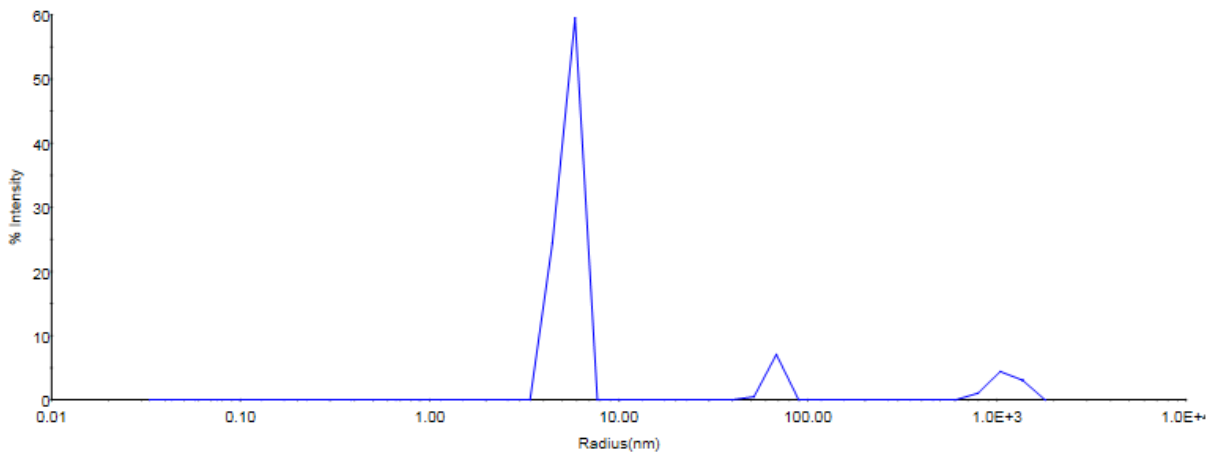
Page 4 of 8

## Dynamic Light Scattering (Pre-conjugation):

Correlation Function: Goat Anti-Human IgG-W0017254 preSTAG



Regularization Results: Goat Anti-Human IgG-W0017254 preSTAG



	Radius (nm)	%Pd	Mw-R (kDa)	%Intensity	%Mass
Peak 1	5.4	11.6	178	83.9	99.1
Peak 2	67.0	6.0	63073	7.6	0.0
Peak 3	1127.2	17.2	46585400	8.5	0.9

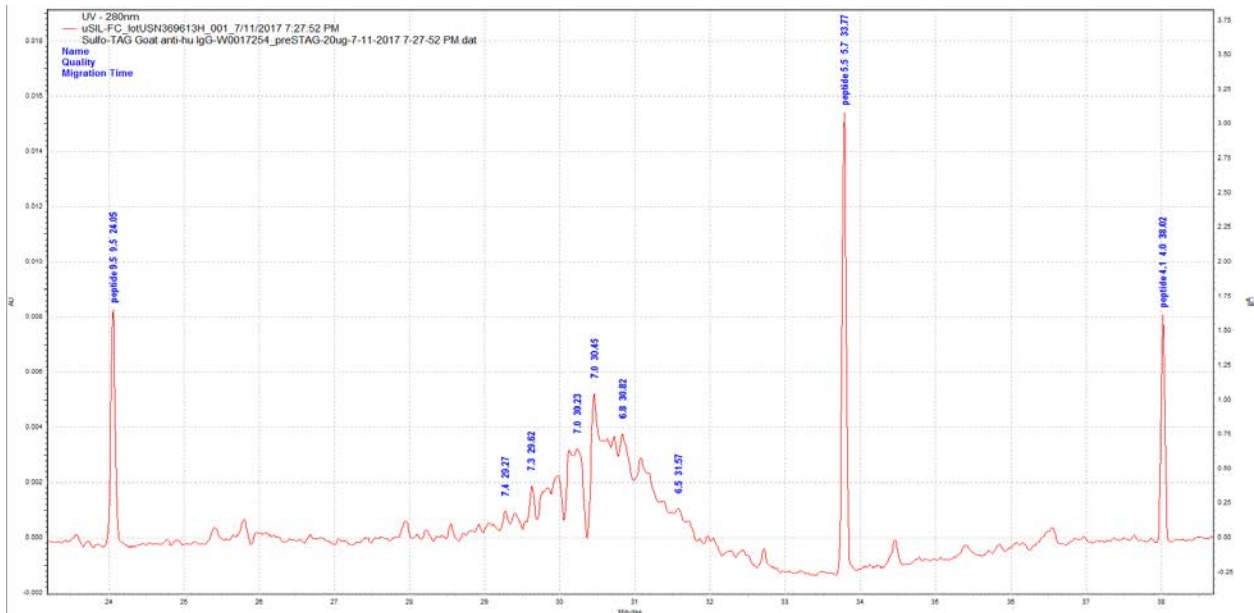


## CERTIFICATE OF ANALYSIS

Page 5 of 8

Sample Summary			Goat Anti-Human IgG-W0017254 preSTAG				
			Repeat 1	Repeat 2	Repeat 3	Average	%CV
Cumulant Fit	Radius (nm)		9.6	6.1	216.80	77.50	155.68
	%Pd		Multimodal	23.7	Multimodal	23.70	---
Regularization Fit	Peak (1.5-3.9nm)	Radius (nm)	---	---	4	4.00	---
		%Pd	---	---	24.2	24.20	---
		% Intensity	---	---	100	100.00	---
		% Mass	---	---	100	100.00	---
	Peak (4.0-20.0nm)	Radius (nm)	4.2	5.4	---	4.80	17.68
		%Pd	10.6	11.6	---	11.10	6.37
		% Intensity	68.4	83.9	---	76.15	14.39
		% Mass	99.2	99.1	---	99.15	0.07
	Peak (20.1-5000.0nm)	Radius (nm)	30.3	67	---	48.65	53.34
		%Pd	5.4	6	---	5.70	7.44
		% Intensity	2	7.6	---	4.80	82.50
		% Mass	0	0	---	0.00	---
Peak (1.5-3.9nm) radius/Cumulant radius ratio			---	---	98.15	94.84	
Peak (4.0-20.0nm) radius/Cumulant radius ratio			56.25	11.48	---	93.81	
Peak (20.1-5000.0nm) radius/Cumulant radius ratio			-215.63	-998.36	---	37.23	

### Capillary Isoelectric Focusing (Pre-conjugation):

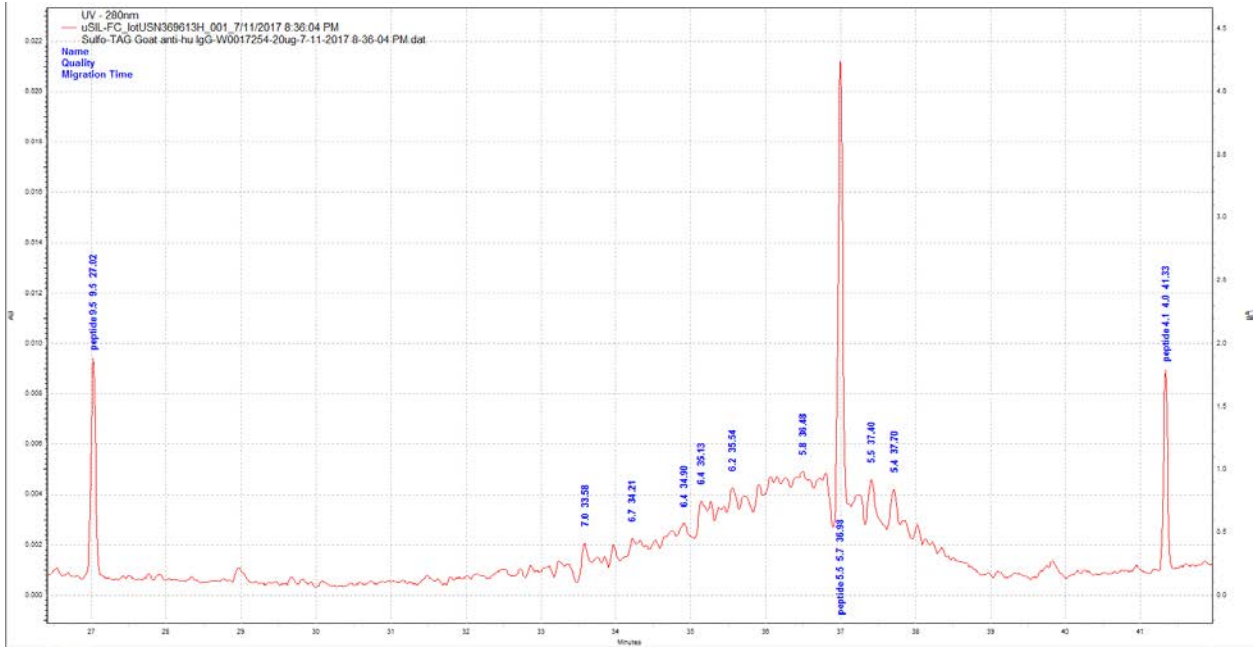




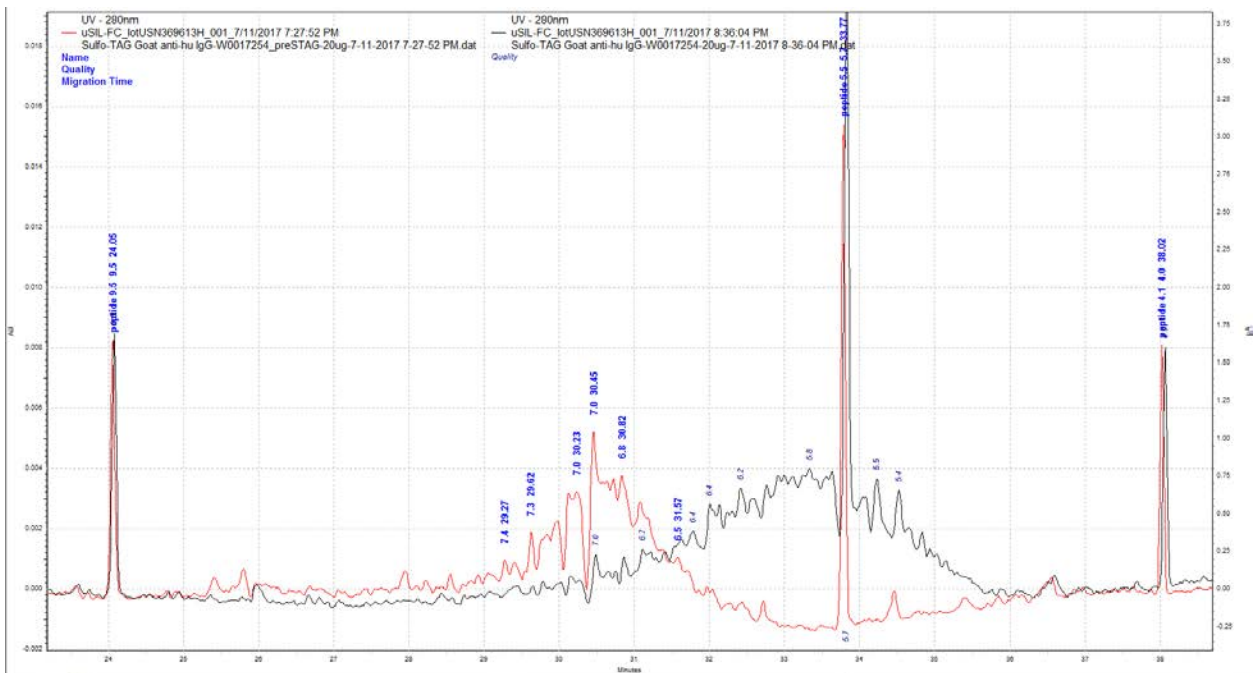
# CERTIFICATE OF ANALYSIS

Page 6 of 8

## Capillary Isoelectric Focusing (Post-conjugation):



## Capillary Isoelectric Focusing (Pre-conjugation (red) and Post-conjugation (blue) Overlay):



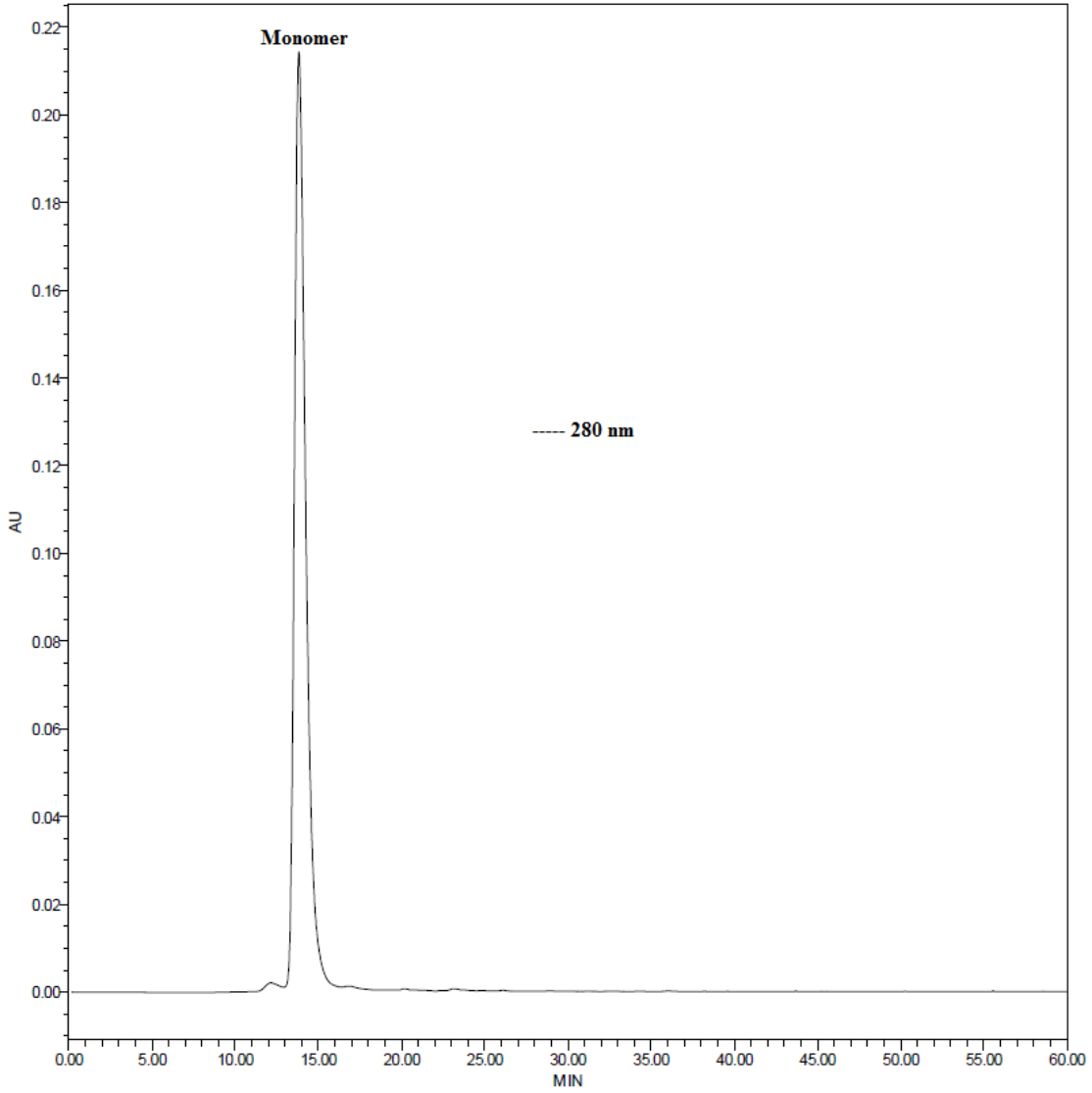


CERTIFICATE OF ANALYSIS

Page 7 of 8

Analytical Size Exclusion Chromatography:

Pre-conjugation material:



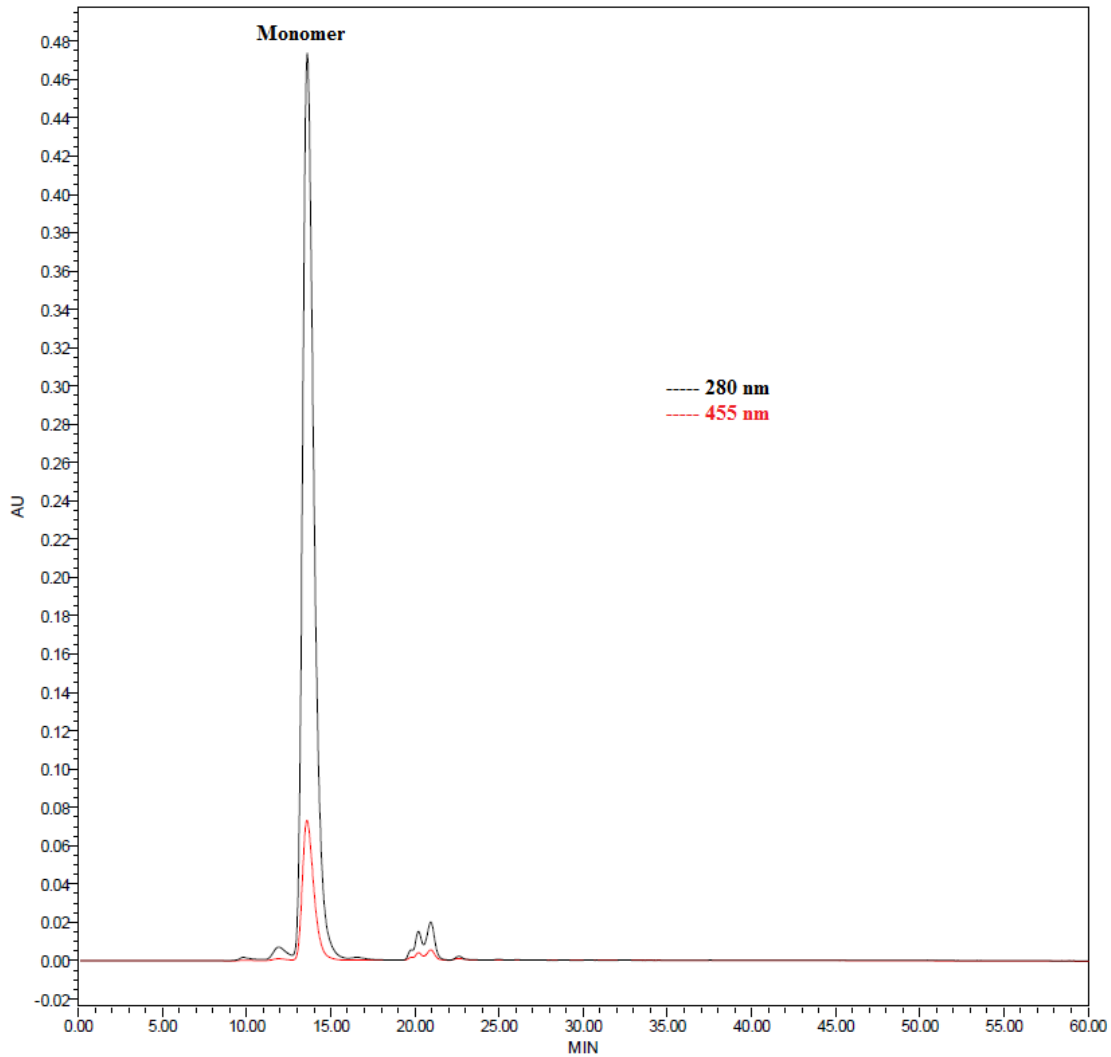
% Monomer = 99.34



CERTIFICATE OF ANALYSIS

Page 8 of 8

Post-conjugation material:



% Monomer = 98.16  
% Free SULFO-TAG™ = 7.97

The above product is intended for Research Use Only. Not for use in Diagnostic Procedures.

	Name	Function	Signature	Date
Review/Approval	Vanessa Castleberry	Quality Assurance	<i>Vanessa Castleberry</i>	25JUL2017